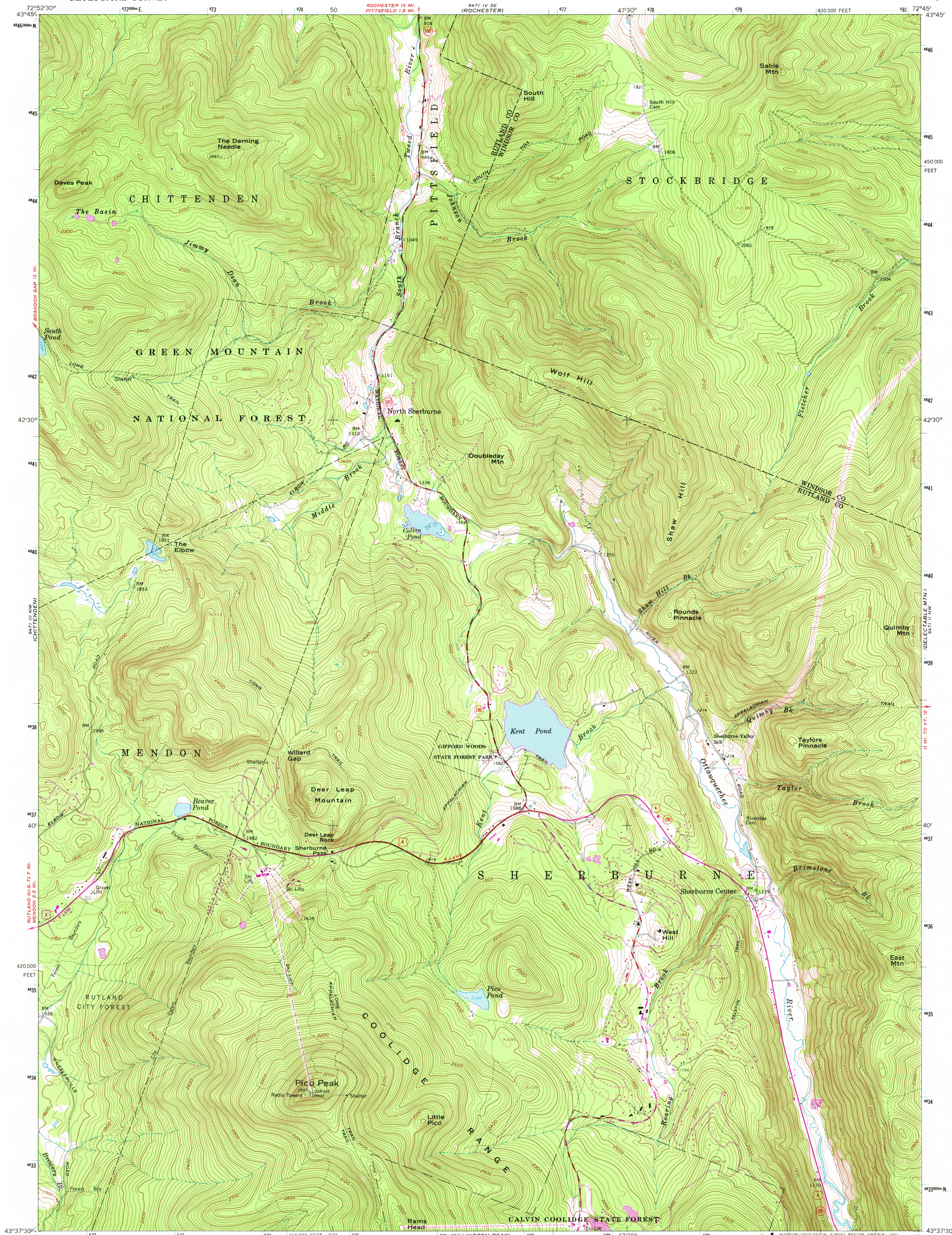
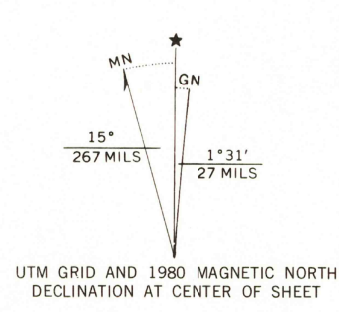


UNITED STATES
DEPARTMENT OF THE INTERIOR
GEOLOGICAL SURVEY

PICO PEAK QUADRANGLE
VERMONT
7.5 MINUTE SERIES (TOPOGRAPHIC)



Mapped, edited, and published by the Geological Survey
Control by USGS, NOS/NOAA, and U.S. Forest Service
Topography by photogrammetric methods from aerial
photographs taken 1957. Field checked 1961
Polyconic projection. 10,000-foot grid based on Vermont coordinate
system. 1000-meter Universal Transverse Mercator grid ticks,
zone 18, shown in blue. 1927 North American Datum. To place on
the predicted North American Datum 1983 move the projection lines
3 meters south and 36 meters west as shown by dashed corner ticks
Fine red dashed lines indicate selected fence and field lines where
generally visible on aerial photographs. This information is unchecked
There may be private inholdings within the boundaries
of the National or State reservations shown on this map



THIS MAP COMPLIES WITH NATIONAL MAP ACCURACY STANDARDS
FOR SALE BY U. S. GEOLOGICAL SURVEY, RESTON, VIRGINIA 22092
A FOLDER DESCRIBING TOPOGRAPHIC MAPS AND SYMBOLS IS AVAILABLE ON REQUEST

Revisions shown in purple compiled from aerial photographs
taken 1978 and other source data. This information not
field checked. Map edited 1980

ROAD CLASSIFICATION	
Heavy-duty	Light-duty
Medium-duty	Unimproved dirt
U.S. Route	State Route



PICO PEAK, VT.
N4337.5-W7245/7.5
1961
PHOTOREVISED 1980
DMA 6471 III NE-SERIES Y813

JUN 29 1981
2550
USGS
HISTORICAL FILE
NATIONAL MAPPING DIVISION