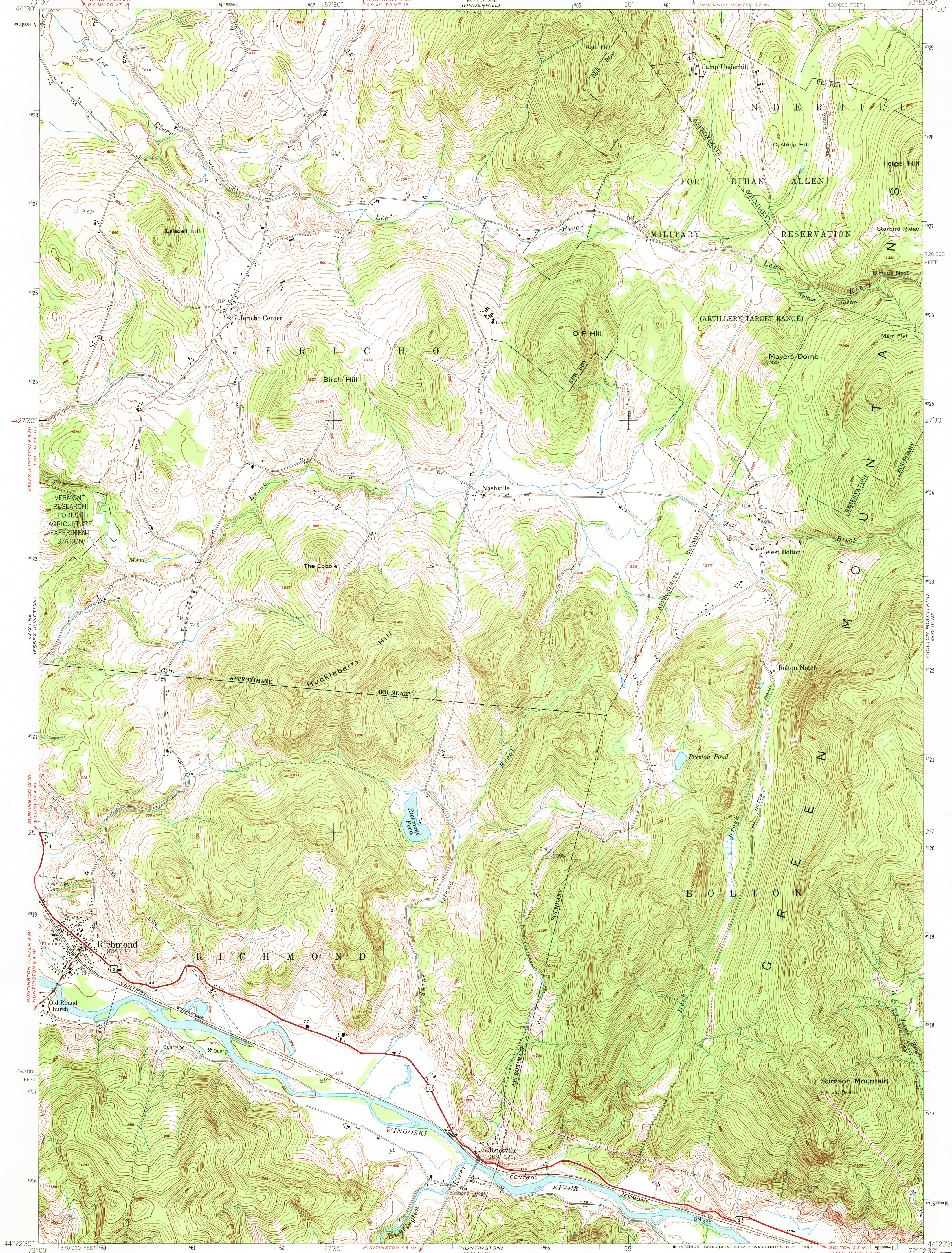
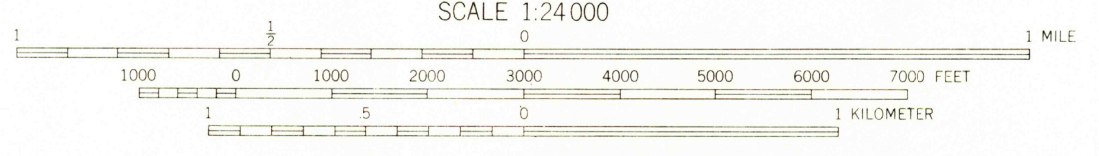
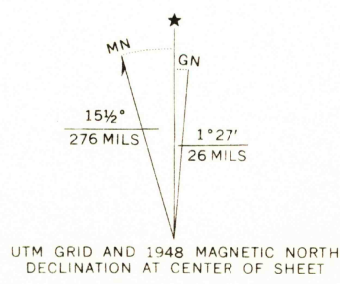


6472 IV SE
(ESSEX CENTER)

6472 IV SE
(MOUNT MANFIELD)



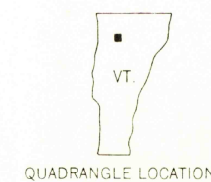
Mapped by the Army Map Service
Published for civil use by the Geological Survey
Control by USGS, USC&GS, and USCE
Topography from aerial photographs by multiplex methods
Aerial photographs taken 1947. Field check 1948
Polyconic projection. 1927 North American datum
10,000-foot grid based on Vermont coordinate system
No distinction is made between dwellings, barns,
commercial and industrial buildings
Unchecked elevations are shown in brown
1000-meter Universal Transverse Mercator grid ticks,
zone 18, shown in blue



THIS MAP COMPLIES WITH NATIONAL MAP ACCURACY STANDARDS
FOR SALE BY U. S. GEOLOGICAL SURVEY, WASHINGTON, D. C. 20242
A FOLDER DESCRIBING TOPOGRAPHIC MAPS AND SYMBOLS IS AVAILABLE ON REQUEST

USGS
Historical File
Topographic Division

ROAD CLASSIFICATION	
Heavy-duty	4 LANE 6 LANE
Medium-duty	4 LANE 6 LANE
Unimproved dirt	=====
U. S. Route	○ State Route



RICHMOND, VT.
NW/4 CAMELS HUMP 15' QUADRANGLE
N4422.5-W7252.5/7.5

1948

AMS 6472 IV NW-SERIES V813

U.S.G.S.
FILE COPY
TOPOGRAPHIC DIVISION

OCT 28 1969