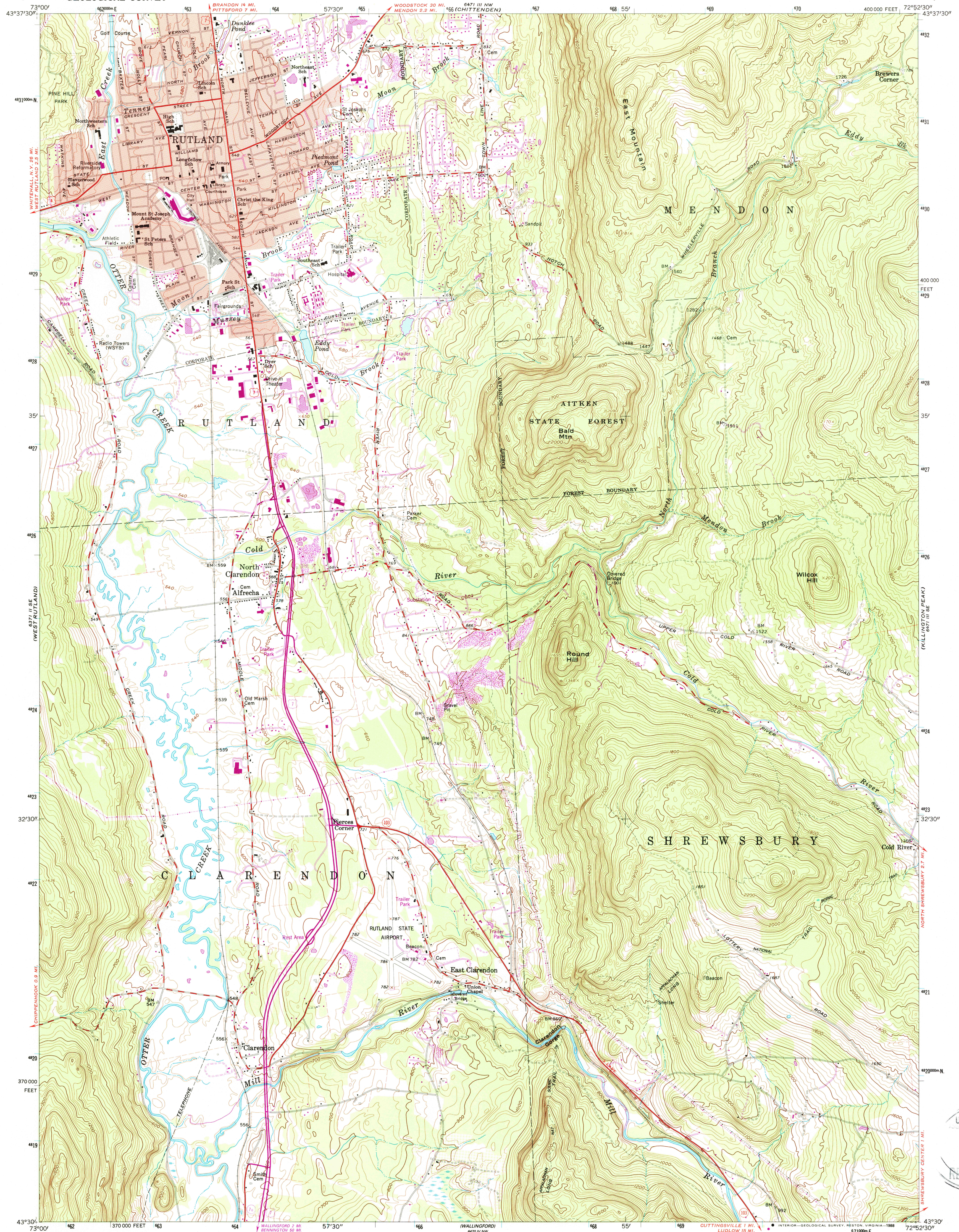


UNITED STATES
DEPARTMENT OF THE INTERIOR
GEOLOGICAL SURVEY

RUTLAND QUADRANGLE
VERMONT—RUTLAND CO.
7.5 MINUTE SERIES (TOPOGRAPHIC)

6471 III NE
(KILLINGTON PEAK)

631 II SE
(PROCTOR)



Maped, edited, and published by the Geological Survey

Control by USGS and NOS/NOAA

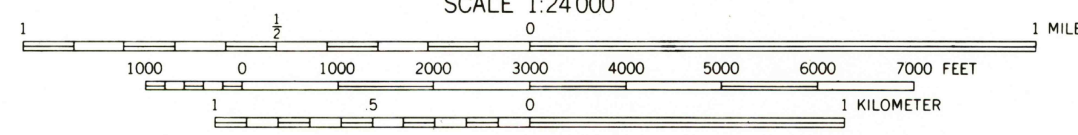
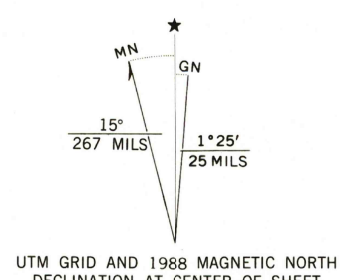
Topography by photogrammetric methods from aerial photographs taken 1957. Field checked 1961.

Polycyclic projection. 10,000-foot grid ticks based on Vermont coordinate system. 1000-meter Universal Transverse Mercator grid ticks, zone 18, shown in blue. 1927 North American Datum. To place on the predicted North American Datum 1983 move the projection lines 3 meters south and 36 meters west as shown by dashed corner ticks.

Fine red dashed lines indicate selected fence and field lines where generally visible on aerial photographs. This information is unchecked.

Red tint indicates area in which only landmark buildings are shown.

There may be private inholdings within the boundaries of the National or State reservations shown on this map.



CONTOUR INTERVAL 20 FEET
NATIONAL GEODETIC VERTICAL DATUM OF 1929

THIS MAP COMPLIES WITH NATIONAL MAP ACCURACY STANDARDS
FOR SALE BY U. S. GEOLOGICAL SURVEY
DENVER, COLORADO 80225 OR RESTON, VIRGINIA 22092
A FOLDER DESCRIBING TOPOGRAPHIC MAPS AND SYMBOLS IS AVAILABLE ON REQUEST

ROAD CLASSIFICATION

Heavy-duty ——— Light-duty ———
Medium-duty ——— Unimproved dirt ———
U. S. Route ——— State Route ———



QUADRANGLE LOCATION

RUTLAND, VT.
43072-E8-TF-024

1961
PHOTOREVISED 1988
DMA 6471 III SW—SERIES V813

Revisions shown in purple and woodland compiled from aerial photographs taken 1983 and other sources. This information not field checked. Map edited 1988.