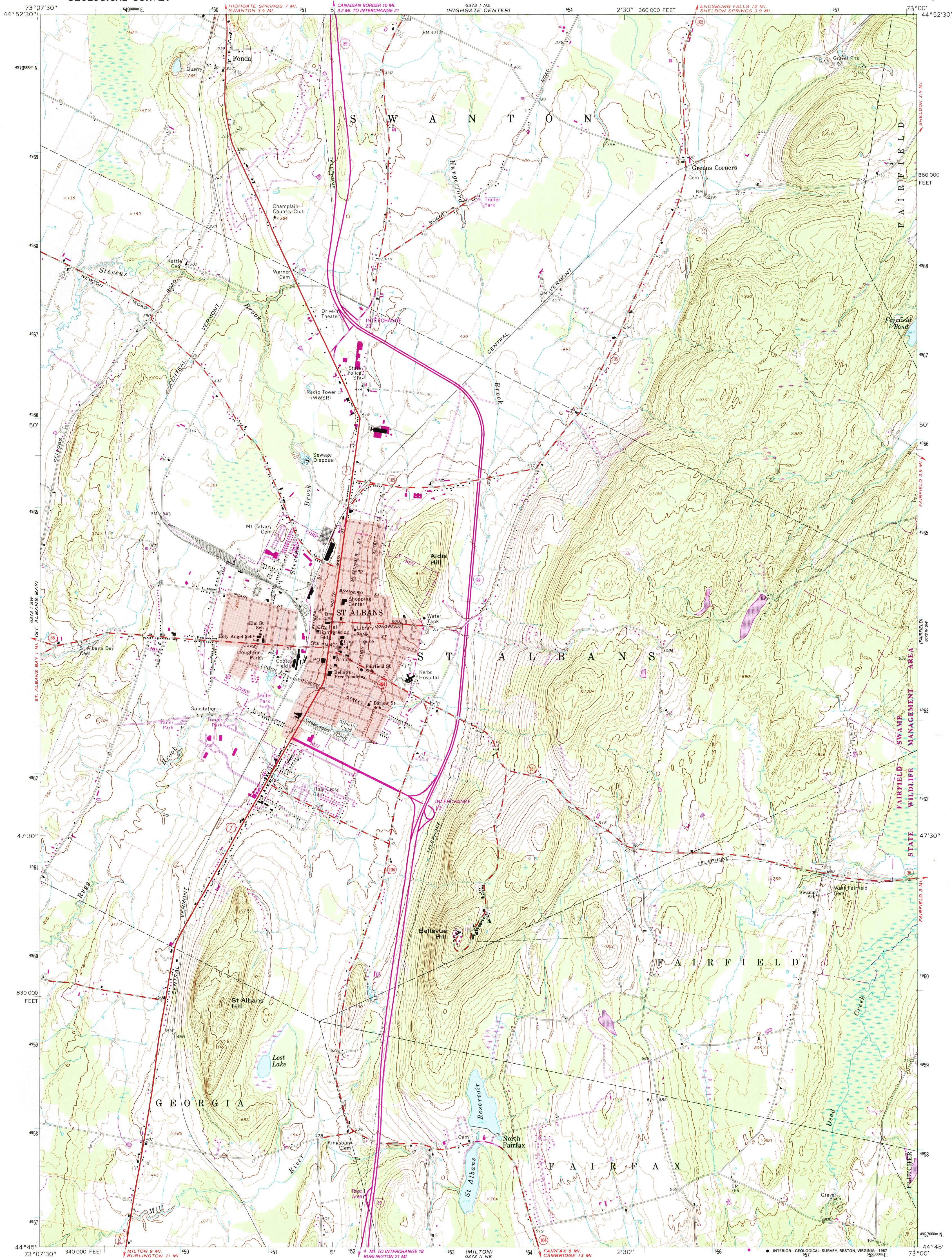


UNITED STATES
DEPARTMENT OF THE INTERIOR
GEOLOGICAL SURVEY

ST. ALBANS QUADRANGLE
VERMONT—FRANKLIN CO.
7.5 MINUTE SERIES (TOPOGRAPHIC)



Mapped, edited, and published by the Geological Survey

Control by USGS, USC&GS, and USCE

Topography by photogrammetric methods from aerial photographs taken 1962. Field checked 1964

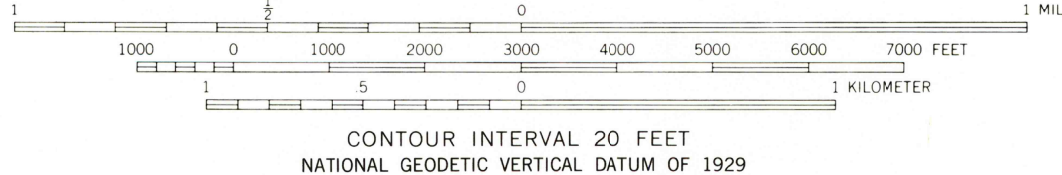
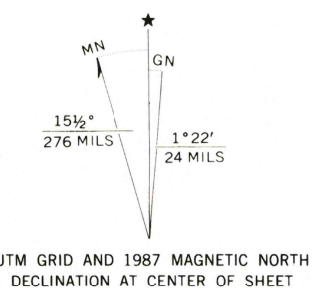
Polyconic projection. 1927 North American datum
10,000-foot grid based on Vermont coordinate system
1000-meter Universal Transverse Mercator grid ticks,
zone 18, shown in blue

Fine red dashed lines indicate selected fence and field lines
where generally visible on aerial photographs. This information is
unchecked

Red tint indicates areas in which only landmark buildings
are shown

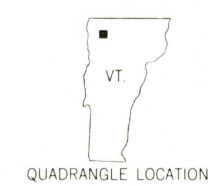
To place on the predicted North American Datum 1983
move the projection lines 1 meter south and
34 meters west as shown by dashed corner ticks

There may be private inholdings within the boundaries
of the National or State reservations shown on this map



THIS MAP COMPLIES WITH NATIONAL MAP ACCURACY STANDARDS
FOR SALE BY U. S. GEOLOGICAL SURVEY
DENVER, COLORADO 80225 OR RESTON, VIRGINIA 22092

A FOLDER DESCRIBING TOPOGRAPHIC MAPS AND SYMBOLS IS AVAILABLE ON REQUEST



ROAD CLASSIFICATION	
Heavy-duty	Light-duty
Medium-duty	Unimproved dirt
Interstate Route	U. S. Route
	State Route

ST. ALBANS, VT.
44073-G1-TF-024

1964
PHOTOREVISED 1987
DMA 6373 1 SE—SERIES V813

Revisions shown in purple and woodland compiled from
aerial photographs taken 1984 and other sources. This
information not field checked. Map edited 1987

