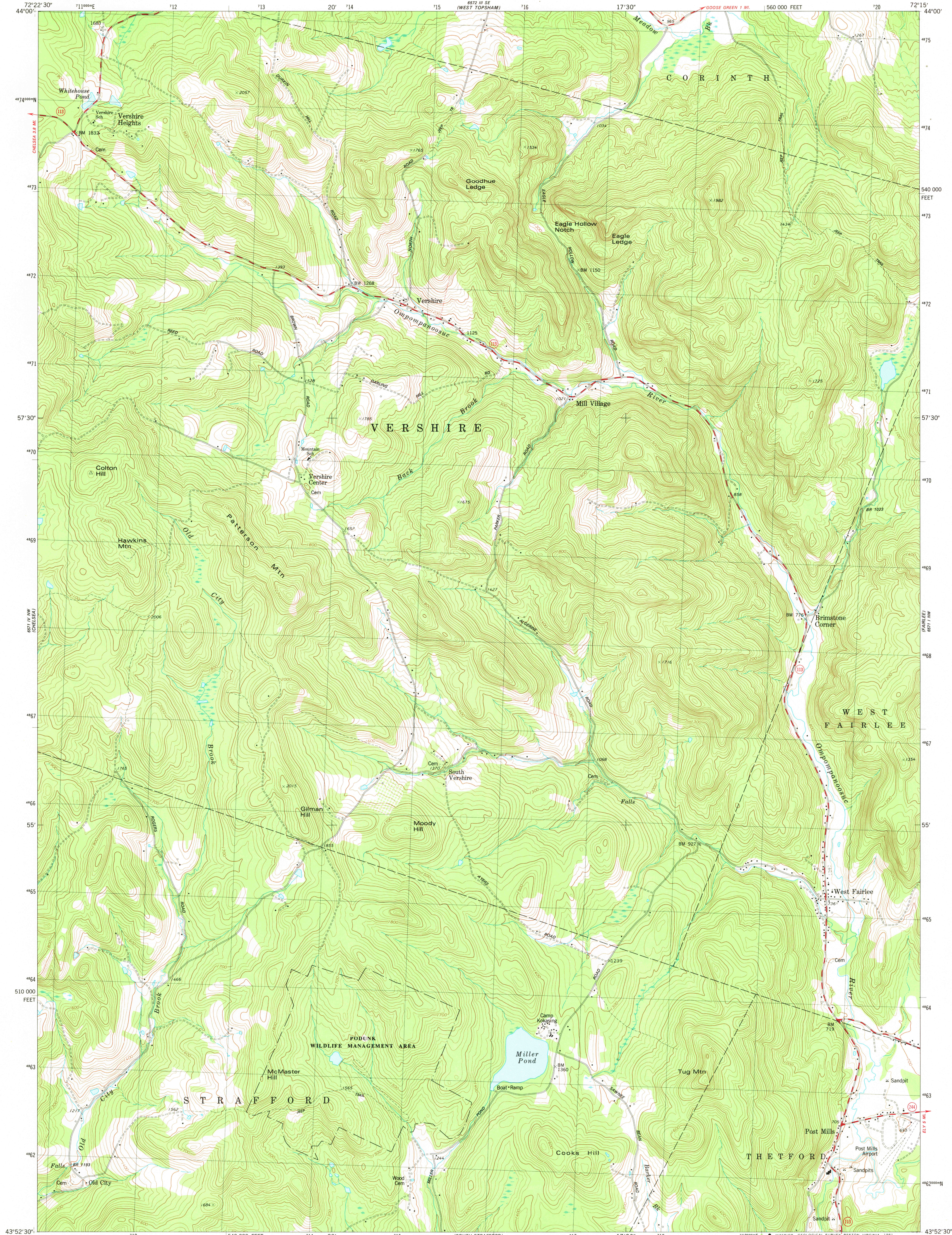


6572 IV SW
(WASHINGTON)

UNITED STATES
DEPARTMENT OF THE INTERIOR
GEOLOGICAL SURVEY

VERSHIRE QUADRANGLE
VERMONT-ORANGE CO.
7.5 MINUTE SERIES (TOPOGRAPHIC)
NE/4 STRAFFORD 15' QUADRANGLE

6572 IV SW
(EAST CORINTH)

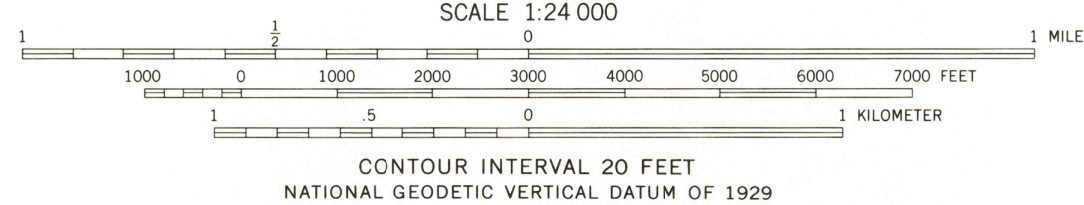
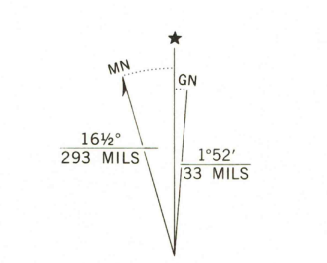


(ORANGE)
6571 IV SW

Mapped, edited, and published by the Geological Survey
Control by USGS and NOS/NOAA

Topography by photogrammetric methods from aerial photographs
taken 1973. Field checked 1975. Map edited 1981
Projection and 10,000-foot grid ticks: Vermont coordinate
system (transverse Mercator)
1000-meter Universal Transverse Mercator grid, zone 18
1927 North American Datum
To place on the predicted North American Datum 1983
move the projection lines 3 meters south and
37 meters west as shown by dashed corner ticks

Fine red dashed lines indicate selected fence and field lines where
generally visible on aerial photographs. This information is unchecked
There may be private inholdings within the boundaries of
the National or State reservations shown on this map



THIS MAP COMPLIES WITH NATIONAL MAP ACCURACY STANDARDS
FOR SALE BY U. S. GEOLOGICAL SURVEY, RESTON, VIRGINIA 22092
A FOLDER DESCRIBING TOPOGRAPHIC MAPS AND SYMBOLS IS AVAILABLE ON REQUEST



ROAD CLASSIFICATION
Primary highway, hard surface
Secondary highway, hard surface
Interstate Route
U. S. Route
State Route
Light-duty road, hard or improved surface
Unimproved road

VERSHIRE, VT.
NE/4 STRAFFORD 15' QUADRANGLE
N4352.5-W7215.7.5

1981
DMA 6571 IV NE-SERIES V813

USGS
Historical File
National Mapping Div.

MAY 20 1981

2252