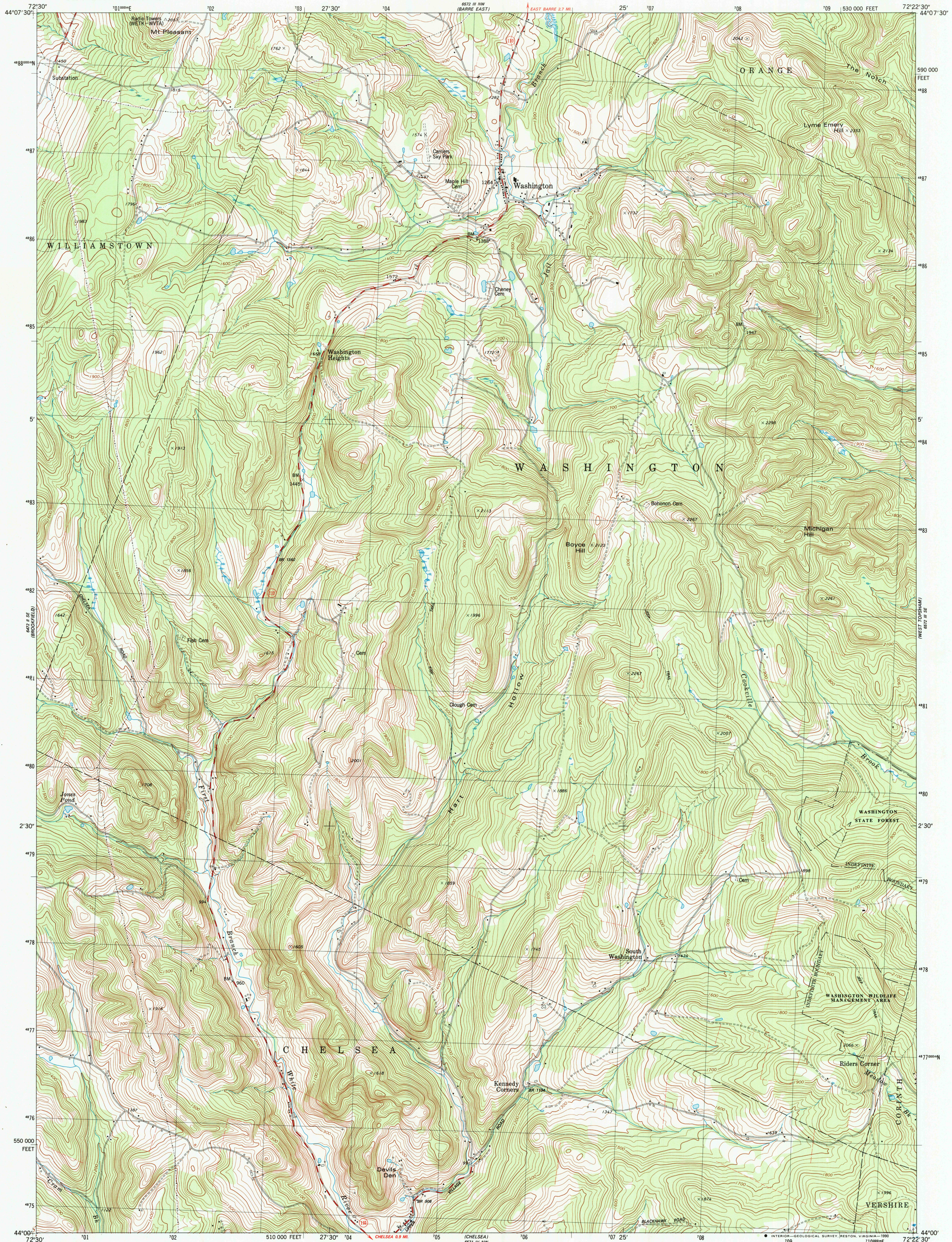


UNITED STATES  
DEPARTMENT OF THE INTERIOR  
GEOLOGICAL SURVEY

WASHINGTON QUADRANGLE  
VERMONT-ORANGE CO.  
7.5 MINUTE SERIES (TOPOGRAPHIC)  
SW 1/4 EAST BARRE 15' QUADRANGLE



Mapped, edited, and published by the Geological Survey

Control by USGS and NOS/NOAA  
Topography by photogrammetric methods from aerial photographs  
taken 1976. Field checked 1976. Map edited 1981

Projection and 10,000-foot grid ticks: Vermont coordinate  
system (transverse Mercator)

1000-meter Universal Transverse Mercator grid, zone 18  
1927 North American Datum

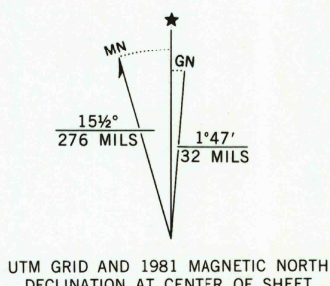
To place on the predicted North American Datum 1983  
move the projection lines 3 meters south and

37 meters west as shown by dashed corner ticks

Area covered by dashed light-blue pattern is subject  
to controlled inundation

Fine red dashed lines indicate selected fence and field lines where  
generally visible on aerial photographs. This information is unchecked

There may be private inholdings within the boundaries of  
the National or State reservations shown on this map



SCALE 1:24 000  
1 000 2000 3000 4000 5000 6000 7000 FEET  
1 5 10 20 30 40 50 60 70 80 90 100 METERS  
CONTOUR INTERVAL 20 FEET  
NATIONAL GEODETIC VERTICAL DATUM OF 1929

THIS MAP COMPLIES WITH NATIONAL MAP ACCURACY STANDARDS  
FOR SALE BY U.S. GEOLOGICAL SURVEY  
DENVER, COLORADO 80225, OR RESTON, VIRGINIA 22092  
A FOLDER DESCRIBING TOPOGRAPHIC MAPS AND SYMBOLS IS AVAILABLE ON REQUEST

ROAD CLASSIFICATION  
Primary highway, hard surface  
Secondary highway, hard surface  
Unimproved road  
Interstate Route  
U.S. Route  
State Route

WASHINGTON, VT.  
SW 1/4 EAST BARRE 15' QUADRANGLE  
N4400-W7222.5/7.5

1981  
PHOTOINSPECTED 1983  
DMA 6572 III SW-SERIES V813