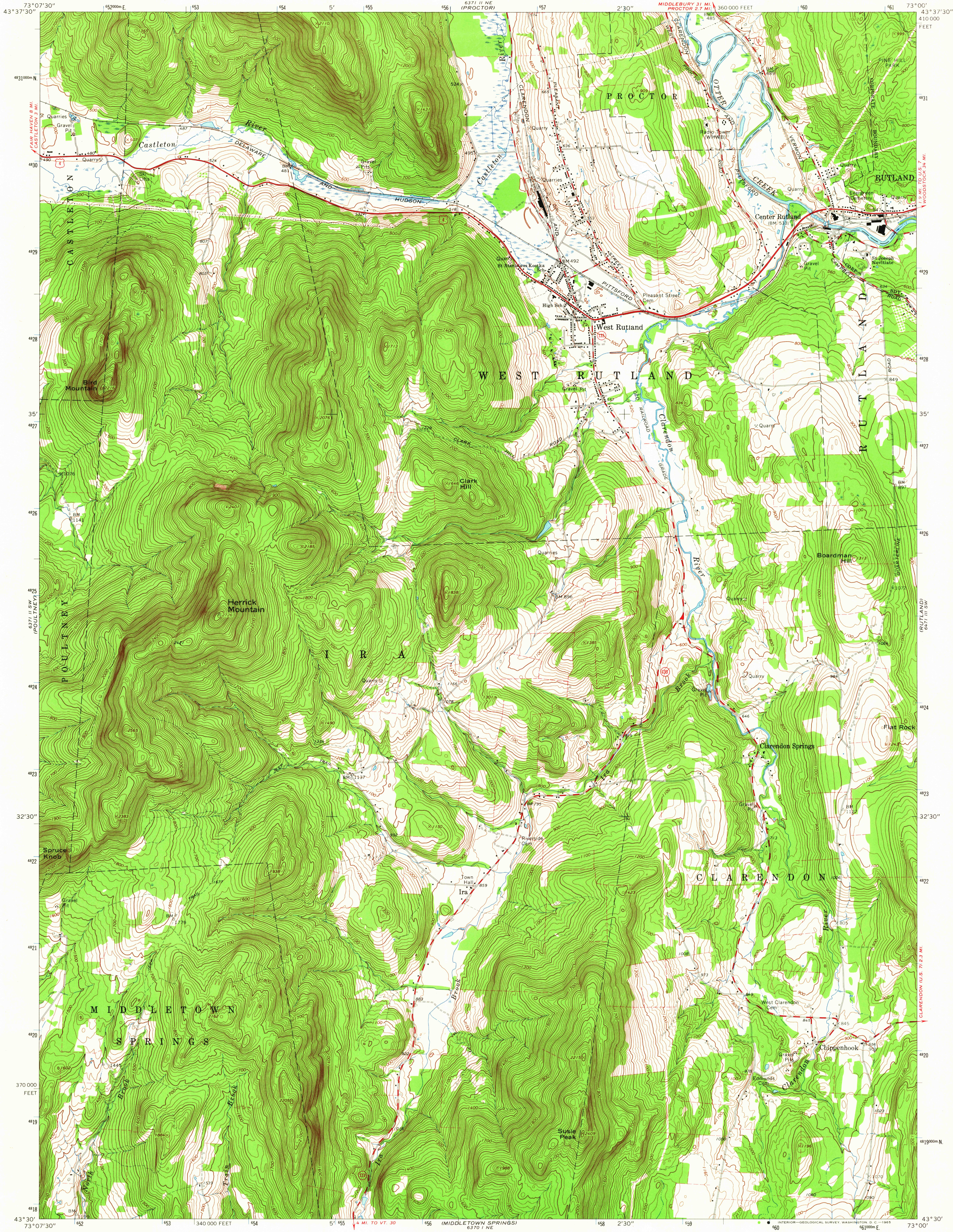


UNITED STATES
DEPARTMENT OF THE INTERIOR
GEOLOGICAL SURVEY

WEST RUTLAND QUADRANGLE
VERMONT-RUTLAND CO.
7.5 MINUTE SERIES (TOPOGRAPHIC)
SE/4 CASTLETON 15' QUADRANGLE



Mapped, edited, and published by the Geological Survey

Control by USGS and USC&GS
Topography by photogrammetric methods from aerial
photographs taken 1962. Field checked 1964

Polyconic projection. 1927 North American datum
10,000-foot grid based on Vermont coordinate system
1000-meter Universal Transverse Mercator grid ticks,
zone 18, shown in blue

Fine red dashed lines indicate selected fence and field lines where
generally visible on aerial photographs. This information is unchecked



UTM GRID AND 1964 MAGNETIC NORTH
DECLINATION AT CENTER OF SHEET

CONTOUR INTERVAL 20 FEET
DATUM IS MEAN SEA LEVEL

THIS MAP COMPLIES WITH NATIONAL MAP ACCURACY STANDARDS
FOR SALE BY U. S. GEOLOGICAL SURVEY, WASHINGTON 25, D. C. 20242
A FOLDER DESCRIBING TOPOGRAPHIC MAPS AND SYMBOLS IS AVAILABLE ON REQUEST

ROAD CLASSIFICATION
Heavy-duty ——— Light-duty ———
Medium-duty ——— Unimproved dirt ———
U. S. Route ——— State Route ———



USGS
Historical File
Topographic Division

WEST RUTLAND, VT.
SE/4 CASTLETON 15' QUADRANGLE
N 43° 30' 00" W 73° 00' 00" E

1964
AMS 6371 II SE—SERIES V813

JUN 2 1965

3705

HISTORICAL