

U.S.G.S.
FILE COPY
TOPOGRAPHIC DIVISION

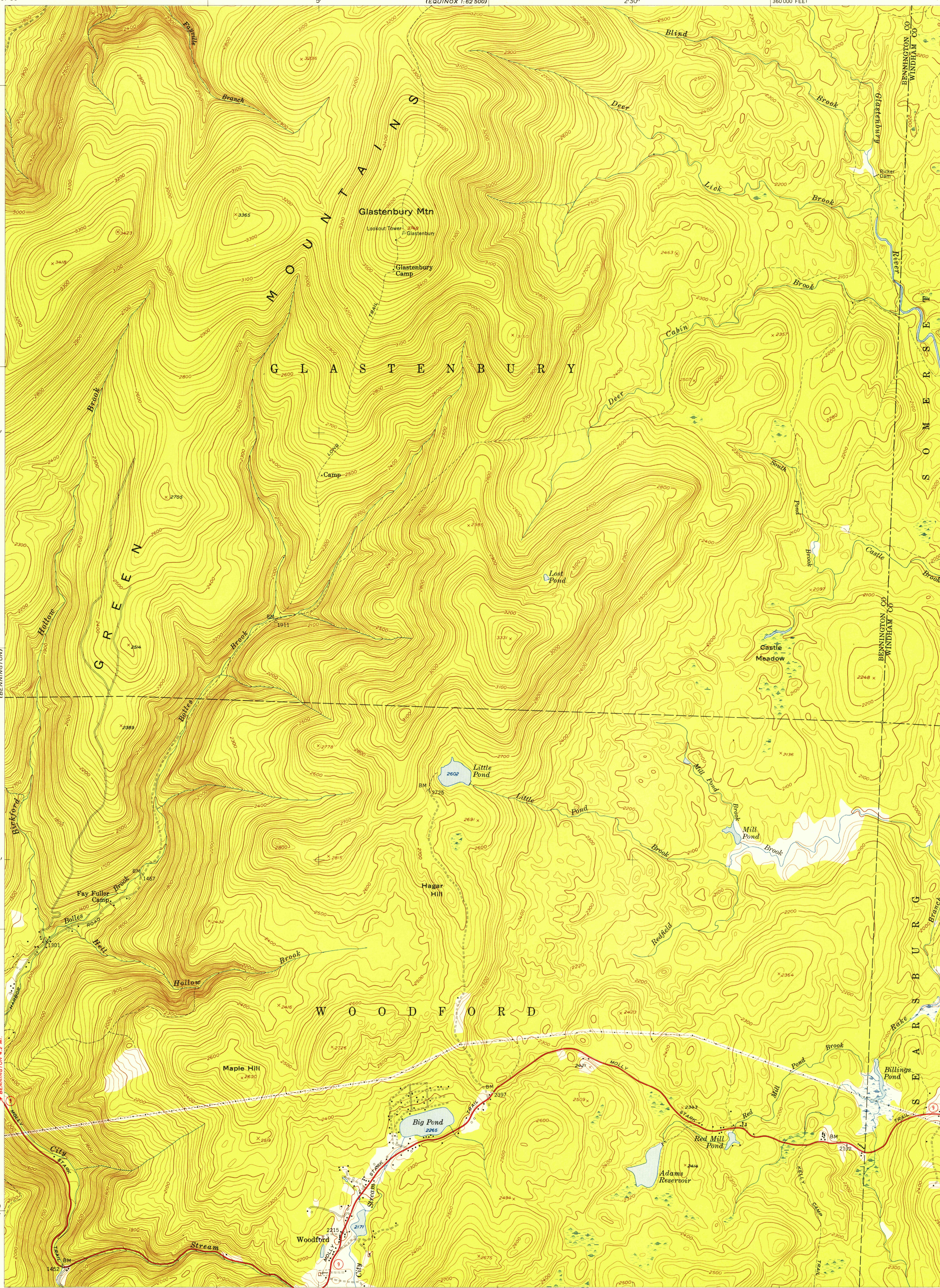
U.S.G.S.
FILE COPY
TOPOGRAPHIC DIVISION

HISTORICAL

HISTORICAL

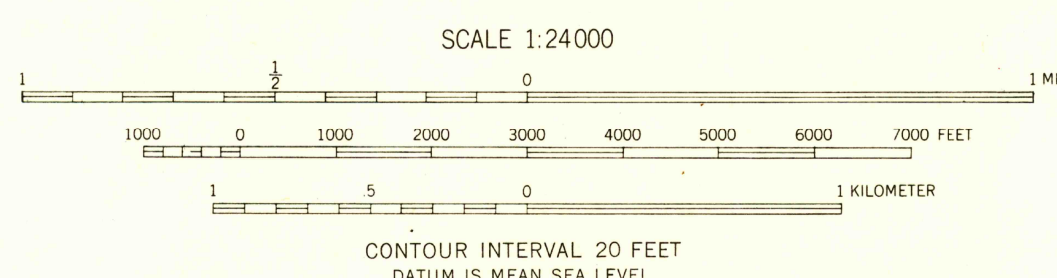
FEB 23 1957

2135



Mapped, edited, and published by the Geological Survey
Control by USGS, USC&GS, and USFS
Topography from aerial photographs by multiplex methods
Aerial photographs taken 1942 and 1951. Field check 1954
Polyconic projection, 1927 North American datum
10,000-foot grid based on Vermont coordinate system
Entire map lies within Green Mountain National Forest
Unchecked elevations are shown in brown

TRUE NORTH
MAGNETIC NORTH
APPROXIMATE MEAN
DECLINATION, 1954



USGS
Historical File
Topographic Division



ROAD CLASSIFICATION
Heavy-duty ——— Light-duty ———
Medium-duty ——— Unimproved dirt ———
U. S. Route ——— State Route ———

WOODFORD, VT.
NE 1/4 BENNINGTON 15' QUADRANGLE
N 4252.5—W 7300/7.5

1954

THIS MAP COMPLIES WITH NATIONAL MAP ACCURACY STANDARDS
FOR SALE BY U. S. GEOLOGICAL SURVEY, WASHINGTON 25, D. C.
A FOLDER DESCRIBING TOPOGRAPHIC MAPS AND SYMBOLS IS AVAILABLE ON REQUEST