

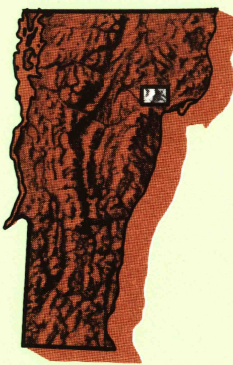
ST. JOHNSBURY, VERMONT

7.5 X 15 MINUTE SERIES (TOPOGRAPHIC)

St. Johnsbury

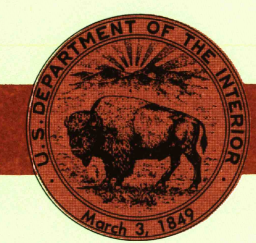
VERMONT

1:25 000-scale metric
topographic map



7.5 X 15 MINUTE QUADRANGLE
SHOWING

- Contours and elevations in meters
- Highways, roads and other manmade structures
- Water features
- Woodland areas
- Geographic names



GEOLOGICAL SURVEY

PROVISIONAL EDITION 1983

PRODUCED BY THE UNITED STATES GEOLOGICAL SURVEY CONTROL BY USGS, NOS/NOAA AND VERMONT DEPARTMENT OF HIGHWAYS COMPILED FROM AERIAL PHOTOGRAPHS TAKEN 1979 FIELD CHECKED 1980-1981. MAP EDITED 1983 PROJECTION UNIVERSAL TRANSVERSE MERCATOR GRID. 1000-METER UNIVERSAL TRANSVERSE MERCATOR ZONE 18 1000-FOOT STATE GRID TICKS VERMONT UTM GRID DECLINATION 70° EAST 1983 MAGNETIC NORTH DECLINATION 16° WEST VERTICAL DATUM NATIONAL GEODETIC VERTICAL DATUM OF 1989 HORIZONTAL DATUM 1927 NORTH AMERICAN DATUM To place on the predicted North American Datum of 1983, move the projection lines as shown by dashed corner ticks (2 meters south and 37 meters west) There may be private inholdings within the boundaries of any Federal and State Reservations shown on this map Gray tint indicates areas in which selected buildings are shown

CONTOUR INTERVAL 6 METERS

CONTROL ELEVATIONS SHOWN TO THE NEAREST 0.1 METER
OTHER ELEVATIONS SHOWN TO THE NEAREST METER

THIS MAP COMPLIES WITH NATIONAL MAP ACCURACY STANDARDS

FOR SALE BY U.S. GEOLOGICAL SURVEY
DENVER, COLORADO 80225, OR RESTON, VIRGINIA 22092

CONVERSION TABLE

Meters	Feet
1	3.2808
2	6.5617
3	9.8425
4	13.1234
5	16.4042
6	19.6850
7	22.9659
8	26.2467
9	29.5276
10	32.8084

To convert meters to feet multiply by 3.2808
To convert feet to meters multiply by 0.3048

ADJOINING MAPS

1	2	3
4	5	6
7	8	

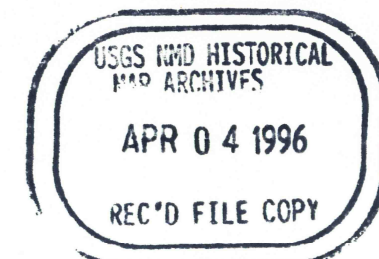
1 Hancock
2 Londonderry
3 Burke Mountain
4 Cabot
5 Concord (T.S.)
6 Marshfield
7 Barre
8 Lower Waterford (T.S.)



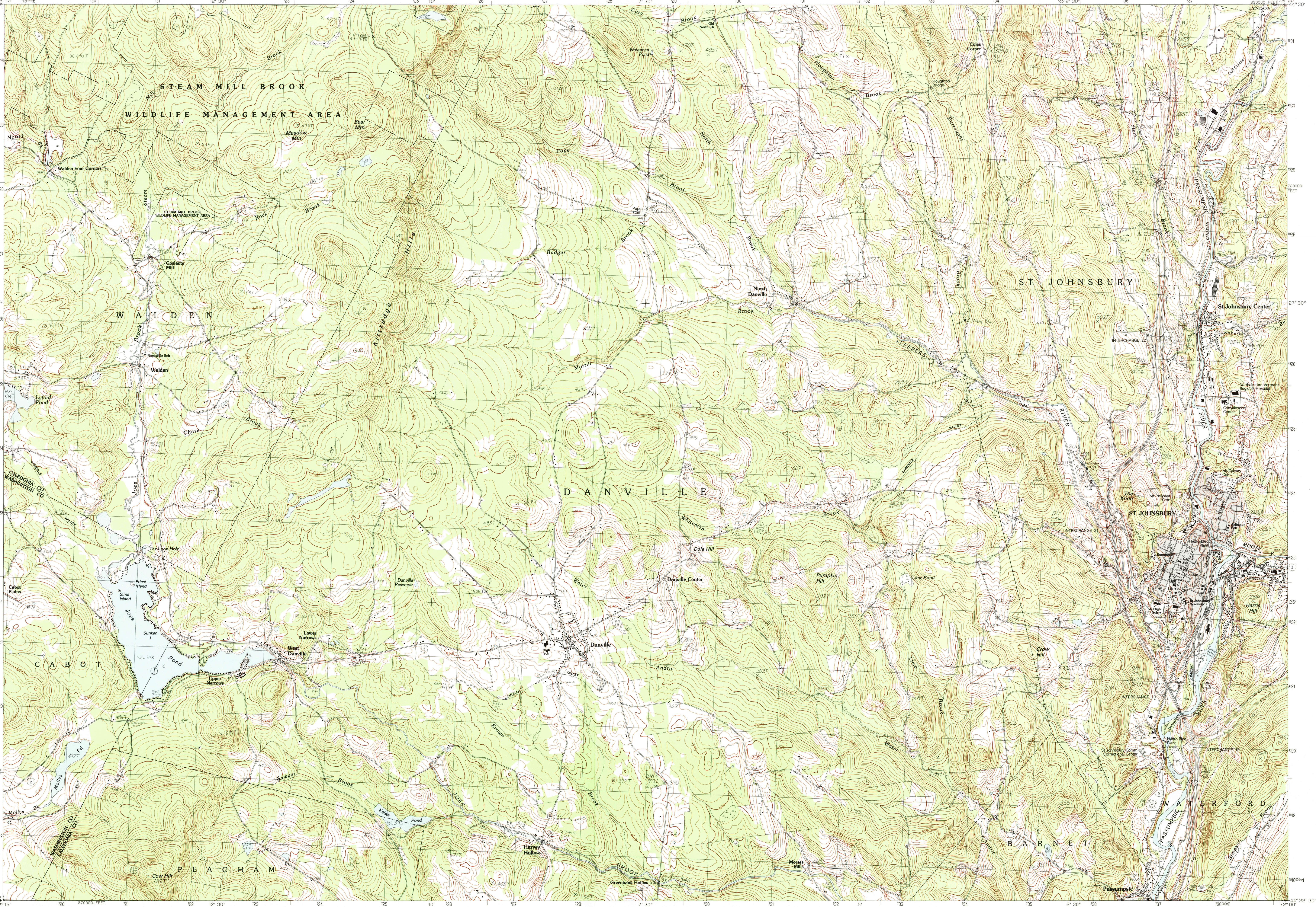
ROAD LEGEND

Improved Road
Unimproved Road
Trail
Interstate Route U. S. Route State Route

PROVISIONAL MAP
Produced from original
manuscript drawings. Information shown as of date of field check



ST. JOHNSBURY, VERMONT
PROVISIONAL EDITION 1983
44072-D1-TM-025



SCALE 1:25 000

1 CENTIMETER ON THE MAP REPRESENTS 250 METERS ON THE GROUND
CONTOUR INTERVAL 6 METERS



INTERIOR: GEOLOGICAL SURVEY, RESTON, VIRGINIA-1983