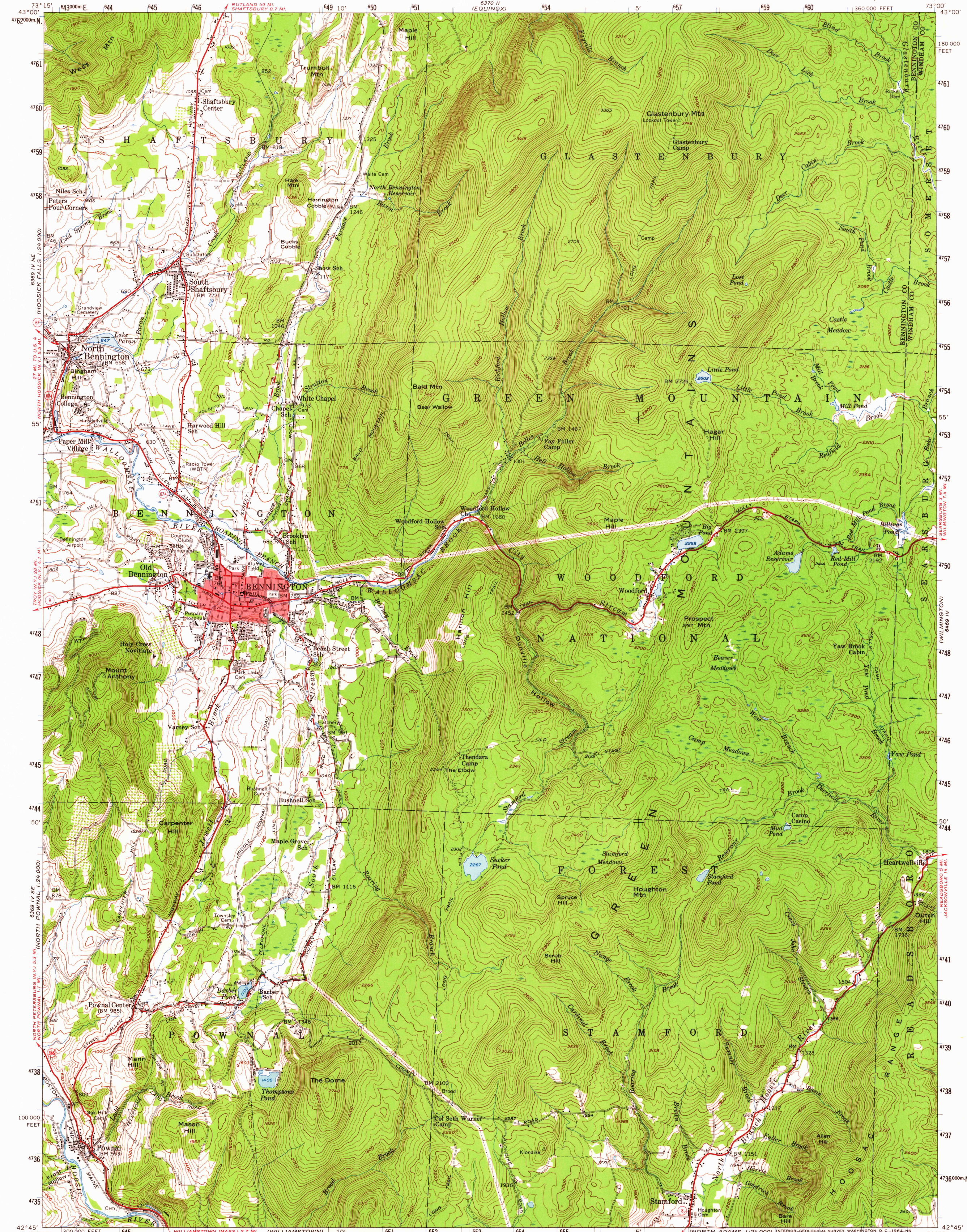


UNITED STATES  
DEPARTMENT OF THE INTERIOR  
GEOLOGICAL SURVEY

BENNINGTON QUADRANGLE  
VERMONT  
15 MINUTE SERIES (TOPOGRAPHIC)



Mapped, edited, and published by the Geological Survey

Control by USGS, USC&GS, U. S. Forest Service, and  
Mass. Dept. of Land and Harbors

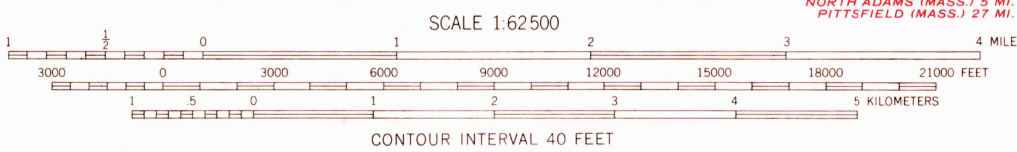
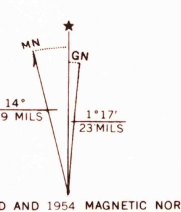
Compiled in 1959 from 1:24,000-scale maps of  
Woodford, Bennington, Pownall, and Stamford  
7.5 minute quadrangles, surveyed 1954

Topography from aerial photographs by photogrammetric methods  
Aerial photographs taken 1942 and 1951

Polyconic projection, 1927 North American datum  
10,000-foot grid based on Vermont coordinate system  
1000-meter Universal Transverse Mercator grid ticks,  
zone 18, shown in blue

Red tint indicates area in which only landmark buildings are shown

Unchecked elevations are shown in brown



THIS MAP COMPLIES WITH NATIONAL MAP ACCURACY STANDARDS  
FOR SALE BY U. S. GEOLOGICAL SURVEY, WASHINGTON 25, D. C.  
A FOLDER DESCRIBING TOPOGRAPHIC MAPS AND SYMBOLS IS AVAILABLE ON REQUEST



ROAD CLASSIFICATION

- Heavy-duty ————
- Medium-duty ————
- Light-duty ————
- Unimproved dirt ————

- U. S. Route ————
- State Route ————

USGS  
Historical File  
Topographic Division

BENNINGTON, VT.  
N4245—W7300/15

AMS 6369 I—SERIES V713

NOV 4 1964

4315