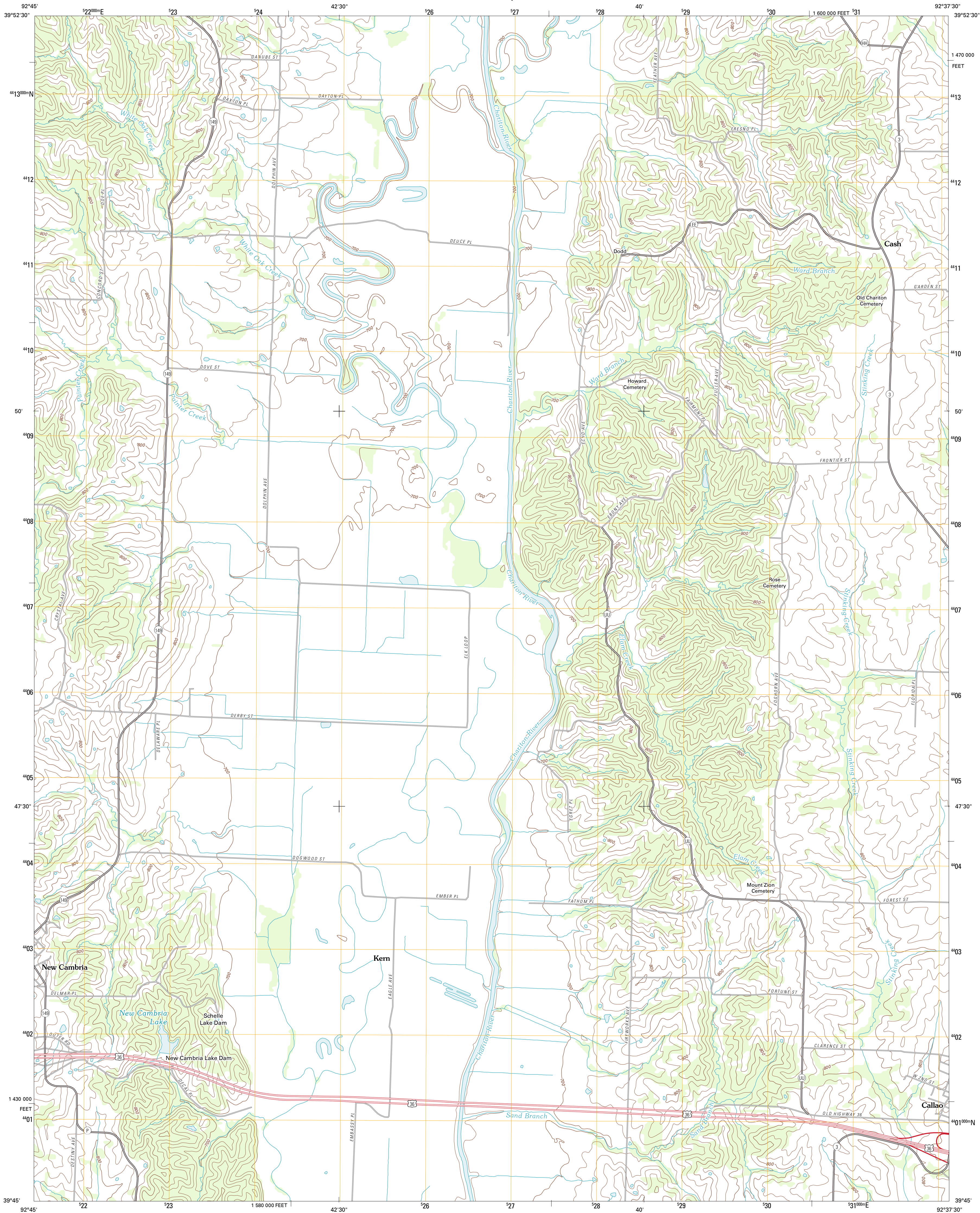




U. S. DEPARTMENT OF THE INTERIOR
U. S. GEOLOGICAL SURVEY



NEW CAMBRIA EAST QUADRANGLE
MISSOURI-MACON CO.
7.5-MINUTE SERIES

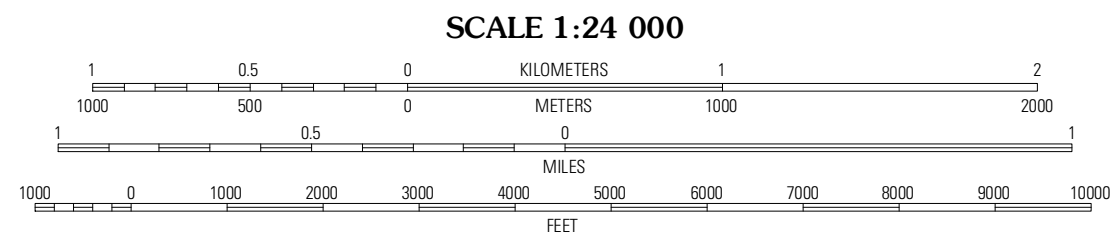


Produced by the United States Geological Survey
North American Datum of 1983 (NAD83)
World Geodetic System of 1984 (WGS84). Projection and
1 000-meter grid: Universal Transverse Mercator, Zone 15S
10 000-foot ticks: Missouri Coordinate System of 1983
(central zone)

Imagery.....NAIP, June 2010
Roads.....©2006-2011 TomTom
Names.....GNIS, 2011
Hydrography.....National Hydrography Dataset, 2010
Contours.....National Elevation Dataset, 2004
Boundaries.....Census, BWC, IBC, USGS, 1972 - 2010

UTM GRID AND 2012 MAGNETIC NORTH
DECLINATION AT CENTER OF SHEET

U.S. National Grid
100,000m Square ID
WE
Grid Zone Designation
15S



This map was produced to conform with the
National Geospatial Program US Topo Product Standard, 2011.
A metadata file associated with this product is draft version 0.6.1



QUADRANGLE LOCATION		
New Boston	Elmer	Barnesville
New Cambria West	New Cambria East	Bever North
Wien	Lagonda	Bever South

ROAD CLASSIFICATION

Interstate Route
US Route
Ramp

State Route
Local Road
4WD

NEW CAMBRIA EAST, MO
2012