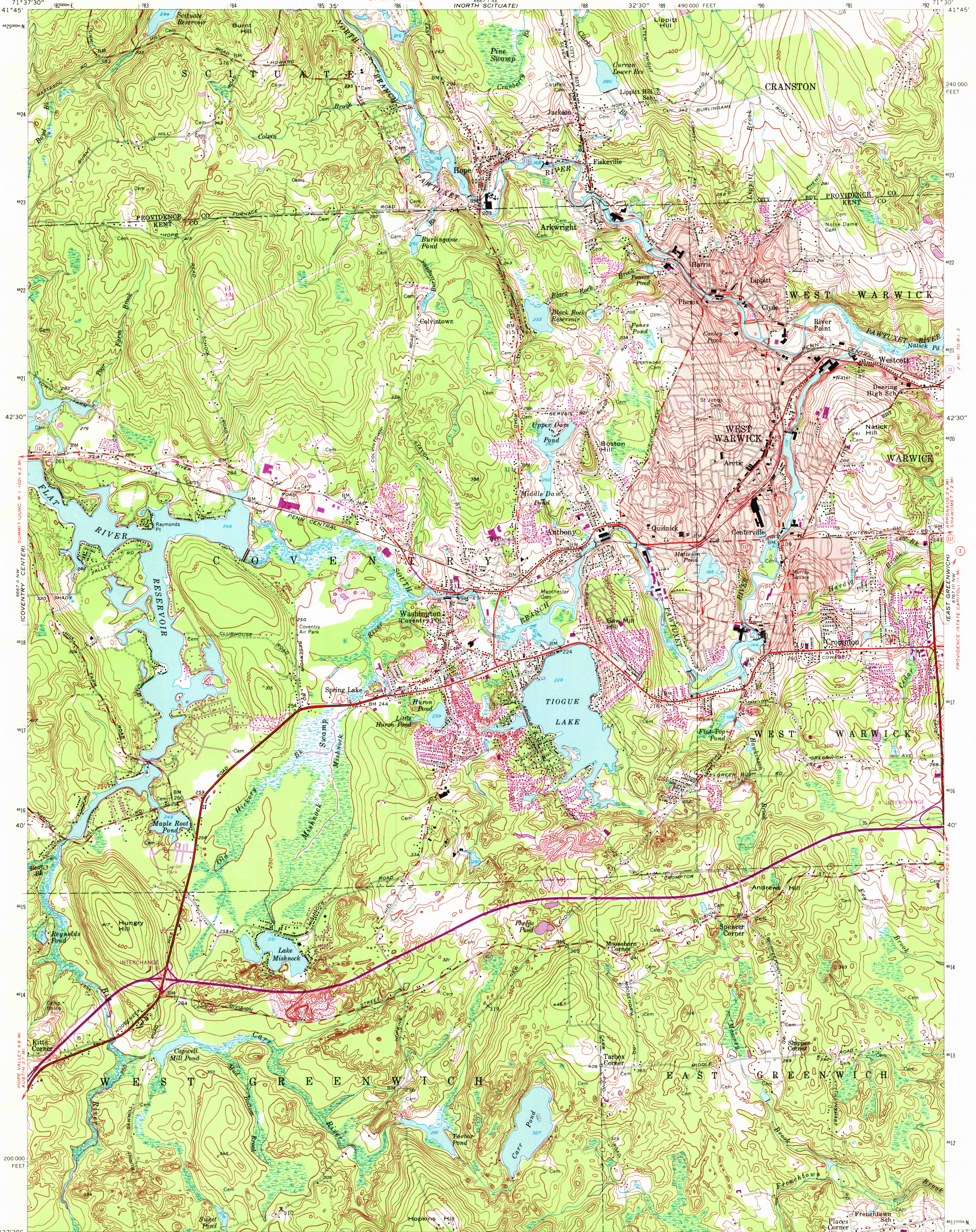
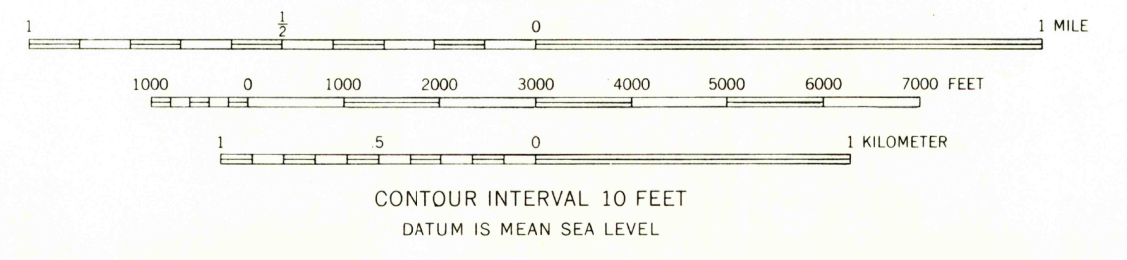
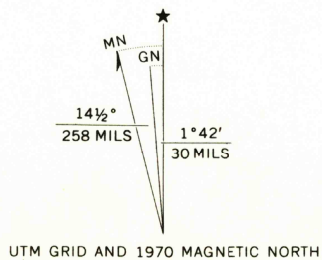


UNITED STATES
DEPARTMENT OF THE INTERIOR
GEOLOGICAL SURVEY

CROMPTON QUADRANGLE
RHODE ISLAND
7.5 MINUTE SERIES (TOPOGRAPHIC)



Mapped, edited, and published by the Geological Survey
Control by USGS and USC&GS
Topography by planetable surveys 1942-1943
Revised 1955
Polyconic projection. 1927 North American datum
10,000-foot grid based on Rhode Island coordinate system
Red tint indicates areas in which only landmark buildings are shown
1000-meter Universal Transverse Mercator grid ticks, zone 19, shown in blue
Revisions shown in purple compiled from aerial photographs taken 1970s. This information not field checked



ROAD CLASSIFICATION	
Heavy-duty	Light duty
Medium duty	Unimproved dirt
U.S. Route	State Route
	Interstate Route

CROMPTON, R. I.
N4137.5—W7130/7.5
1955
PHOTOREVISED 1970
AMS 6667 II NE—SERIES V815

USGS
HISTORICAL FILE
TOPOGRAPHIC DIVISION
REV 2 1972

4165