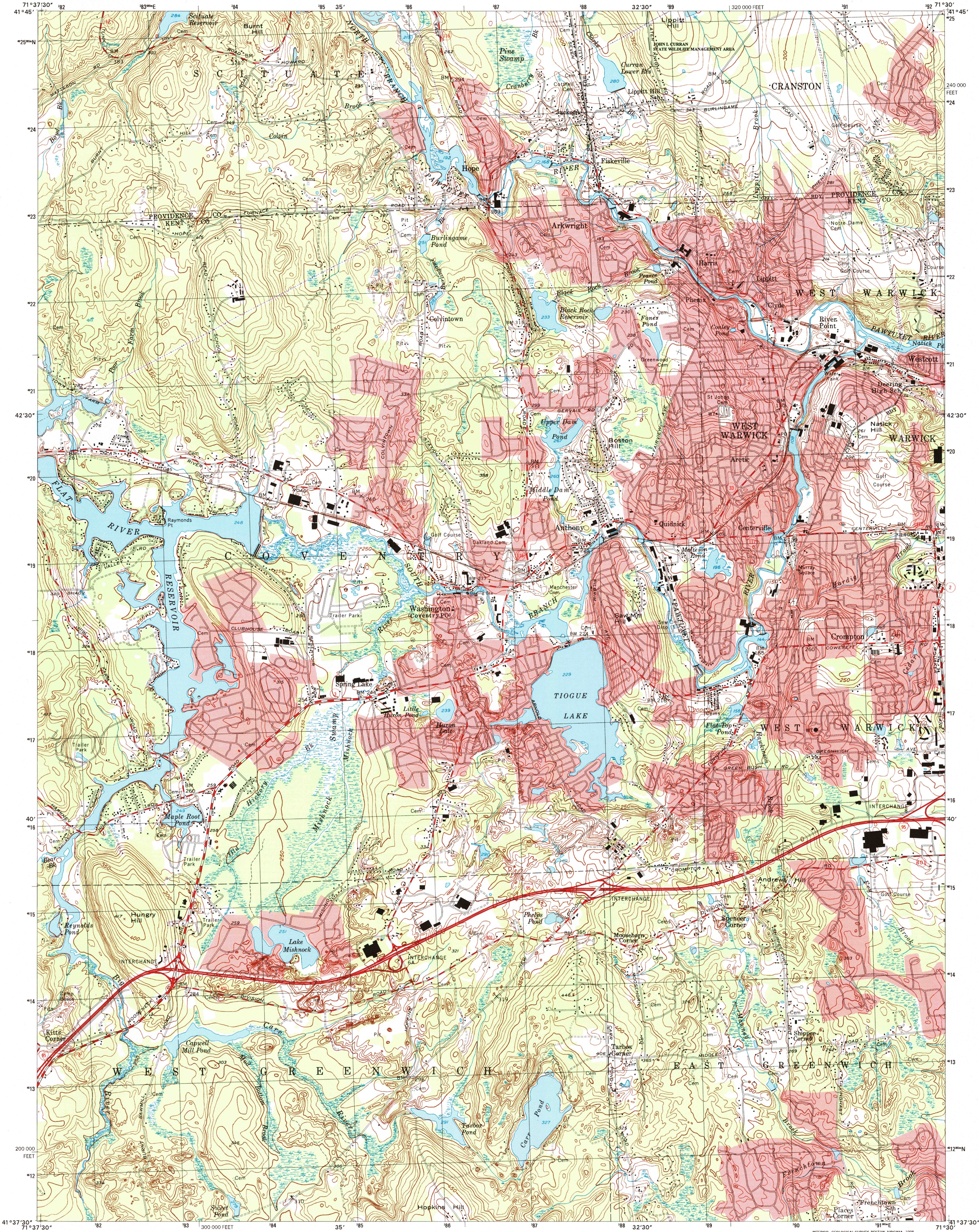
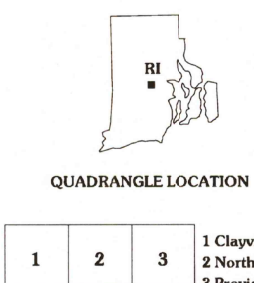
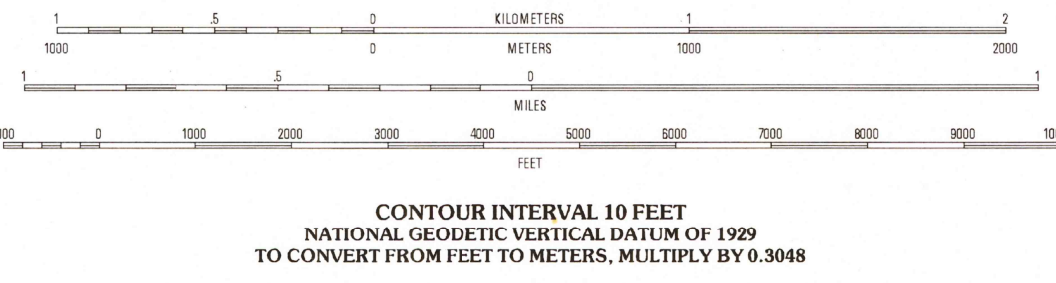
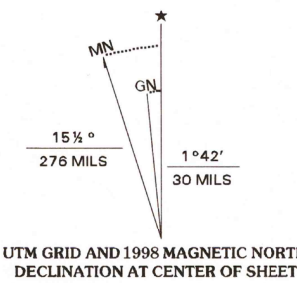


UNITED STATES  
DEPARTMENT OF THE INTERIOR  
GEOLOGICAL SURVEY

CROMPTON QUADRANGLE  
RHODE ISLAND  
7.5-MINUTE SERIES (TOPOGRAPHIC)



Produced by the United States Geological Survey  
Topography compiled 1942. Planimetry derived from imagery  
taken 1955. Survey control current as of 1955  
North American Datum of 1983 (NAD 83). Projection and  
1 000-meter grid: Universal Transverse Mercator, zone 19  
10 000-foot ticks: Rhode Island Coordinate System of 1983  
North American Datum of 1927 (NAD 27) is shown by dashed  
corner ticks. The values of the shift between NAD 83 and NAD 27  
for 7.5-minute intersections are obtainable from National Geodetic  
Survey NADCON software  
There may be private inholdings within the boundaries of  
the National or State reservations shown on this map  
Landmark buildings verified 1955



ROAD CLASSIFICATION	
Primary highway hard surface .....	Light-duty road, hard or improved surface .....
Secondary highway hard surface .....	Unimproved road .....
Interstate Route	U.S. Route
State Route	

1	2	3
4	5	6
7	8	9

ADJOINING 7.5' QUADRANGLE NAMES

THIS MAP COMPLES WITH NATIONAL MAP ACCURACY STANDARDS  
FOR SALE BY U.S. GEOLOGICAL SURVEY, P.O. BOX 25286, DENVER, COLORADO 80225  
A FOLDER DESCRIBING TOPOGRAPHIC MAPS AND SYMBOLS IS AVAILABLE ON REQUEST

AUG 07 1998

CROMPTON, RI

1995

NIMA 6667 II NE-SERIES V815

RECEIVED

AUG 31 1998

USGS NWD

HISTORICAL MAP ARCHIVES

ISBN 0-607-87221-7

9 780607 872217