

6667 II NW
(CONTOUR)

UNITED STATES
DEPARTMENT OF THE INTERIOR
GEOLOGICAL SURVEY

71°45'
41°37'30"

2770000 E

42°30'

6667 II NW
(CONTOUR CENTER)

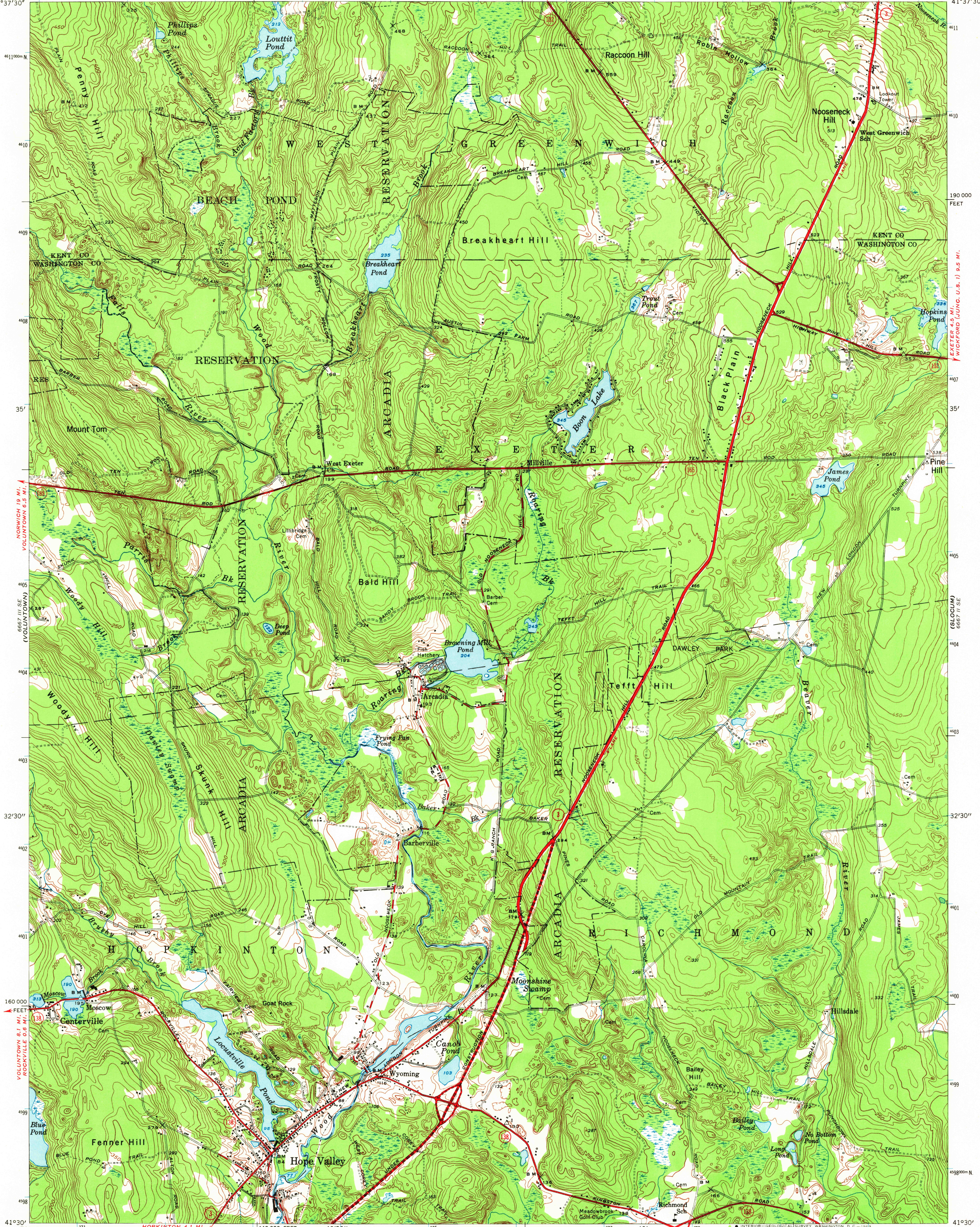
CHEPACHET 23 MI.
SUMMIT (JUNC. R.I. 117) 5 MI.

HOPE VALLEY QUADRANGLE
RHODE ISLAND
7.5 MINUTE SERIES (TOPOGRAPHIC)

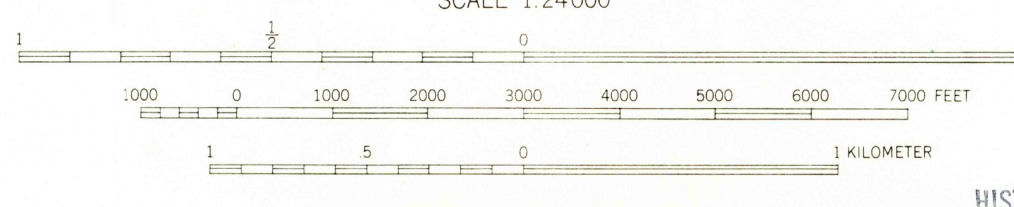
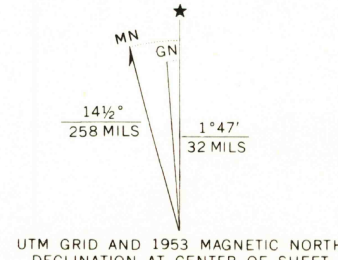
PROVIDENCE 23 MI.
ANTHONY 7.6 MI.

6667 I NE
(CONTOUR)

71°37'30"
41°37'30"



Mapped, edited, and published by the Geological Survey
Control by USGS, USCE, and Rhode Island Geodetic Survey
Topography by plane-table surveys 1942. Revised 1953
Polyconic projection. 1927 North American datum
10,000-foot grid based on Rhode Island coordinate system
1000-meter Universal Transverse Mercator grid ticks,
zone 19, shown in blue



CONTOUR INTERVAL 10 FEET
DATUM IS MEAN SEA LEVEL

USGS
HISTORICAL FILE
TOPOGRAPHIC DIVISION



Heavy-duty 4 LANE 16 LANE Light-duty
Medium-duty 4 LANE 16 LANE Unimproved dirt
U.S. Route State Route

U.S.G.S.
FILE COPY
TOPOGRAPHIC DIVISION

HOPE VALLEY, R. I.
N 4130-W 7137.5/7.5
1953
AMS 6667 II SW-SERIES V815

2960
OCT 15 1966