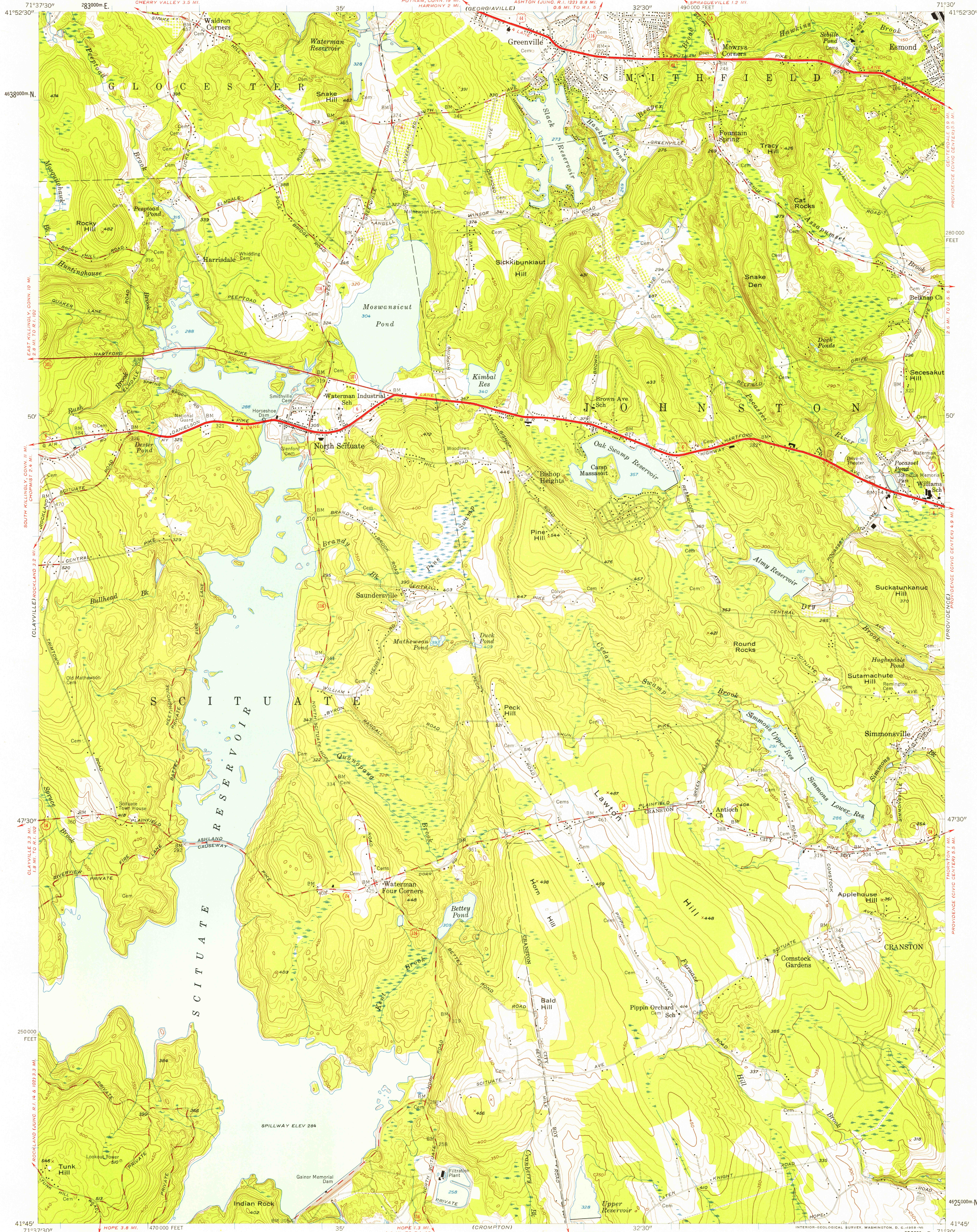
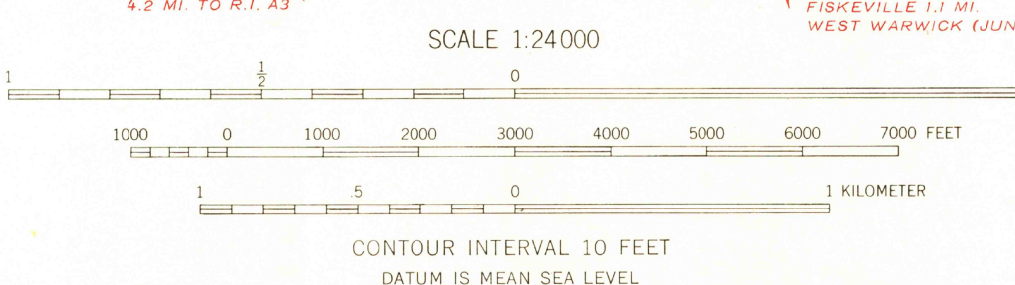


UNITED STATES
DEPARTMENT OF THE INTERIOR
GEOLOGICAL SURVEY

NORTH SCITUATE QUADRANGLE
RHODE ISLAND—PROVIDENCE CO.
7.5 MINUTE SERIES (TOPOGRAPHIC)



Mapped, edited, and published by the Geological Survey
Control by USGS and USC&GS
Topography by planetable surveys 1942-1943 Revised 1955
Polyconic projection, 1927 North American datum
10,000-foot grid based on Rhode Island coordinate system
1000-meter Universal Transverse Mercator grid ticks,
zone 19, shown in blue



USGS
HISTORICAL FILE
TOPOGRAPHIC DIVISION

ROAD CLASSIFICATION
Heavy-duty ——— Light-duty ———
Medium-duty ——— Unimproved dirt ———
U.S. Route ——— State Route ———



U.S.G.S.
FILE COPY
TOPOGRAPHIC DIVISION

NORTH SCITUATE, R. I.
N4145-W7130/7.5

1955

MAR 13 1958

THIS MAP COMPLIES WITH NATIONAL MAP ACCURACY STANDARDS
FOR SALE BY U. S. GEOLOGICAL SURVEY, WASHINGTON, D. C.
A FOLDER DESCRIBING TOPOGRAPHIC MAPS AND SYMBOLS IS AVAILABLE ON REQUEST