

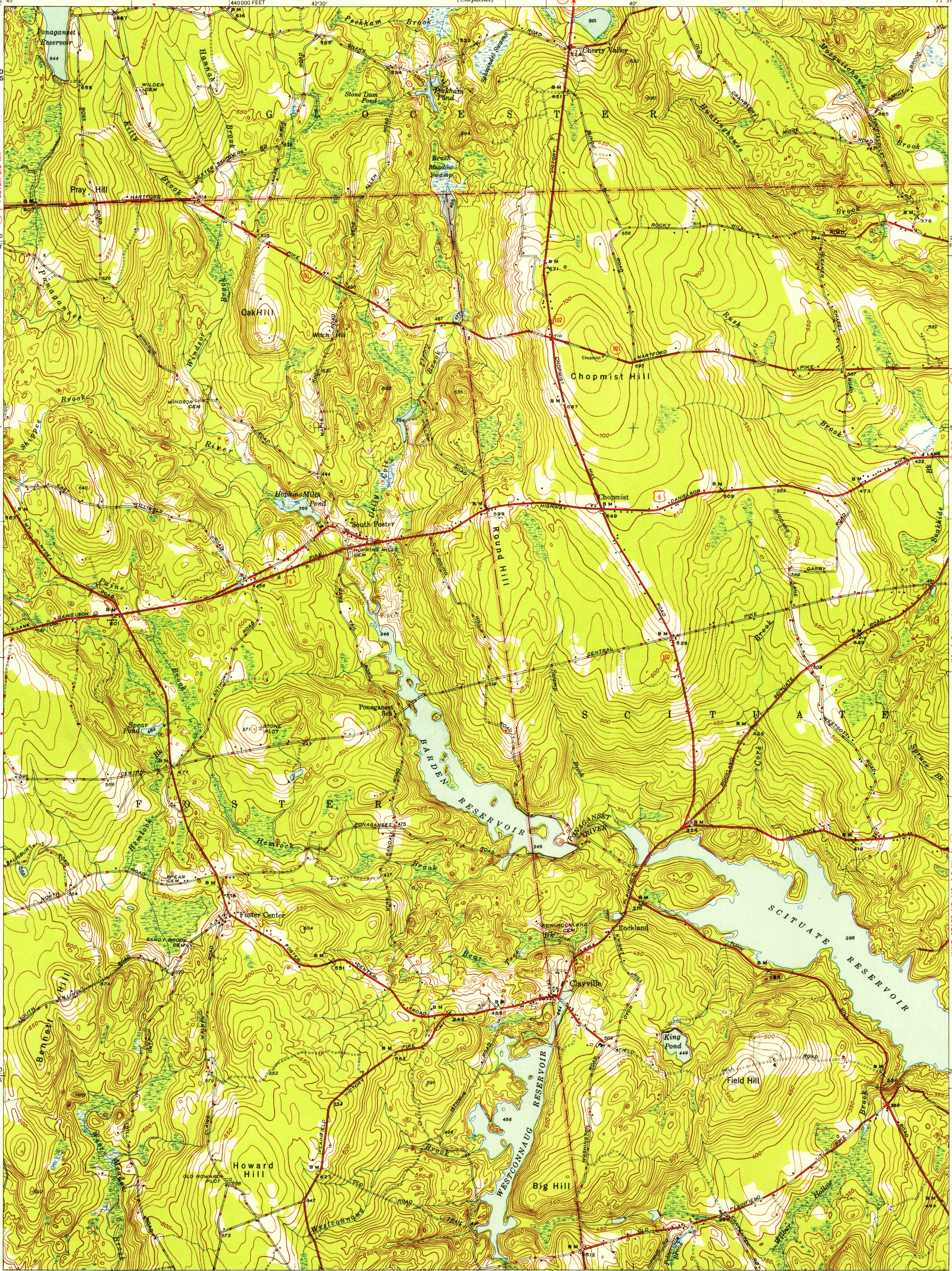
UNITED STATES
DEPARTMENT OF THE INTERIOR
GEOLOGICAL SURVEY

WAR DEPARTMENT
CORPS OF ENGINEERS, U. S. ARMY
(Chepachet)

RHODE ISLAND
(PROVIDENCE COUNTY)
CLAYVILLE QUADRANGLE
7½-MINUTE SERIES

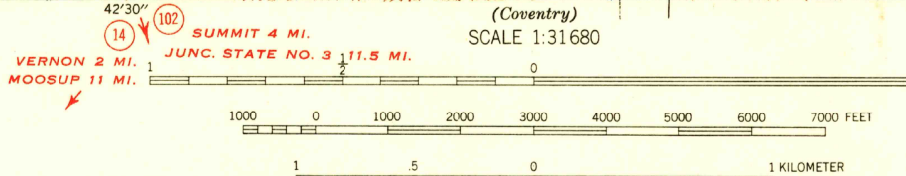
U.S.G.S.
FILE COPY
TOPOGRAPHIC DIVISION

U.S.G.S.
FILE COPY
TOPOGRAPHIC DIVISION



Topography by J. L. Twombly, R. D. Hall,
E. G. Alexander, and W. M. Foley
Surveyed in 1942-43

TRUE NORTH
MAGNETIC NORTH
APPROXIMATE MEAN
DECLINATION, 1942



Contour interval 10 feet
Datum is mean sea level

USGS
HISTORICAL FILE
TOPOGRAPHIC DIVISION
ROAD CLASSIFICATION

Dependable hard surface,
heavy-duty road.
Loose-surface graded,
un-surfaced graded,
dry weather roads.
Secondary, hard-surface,
all-weather road.
Dirt road.
More than two lanes indicated by note along road with tick at point of change.

Polyconic projection. 1927 North American datum
5000 yard grid based on U. S. zone system, A
10000 foot grid based on Rhode Island
rectangular coordinate system

U. S. Route 21
State Route 38
CLAYVILLE, R. I.
Edition of 1943

N4145-W7137.5/7.5