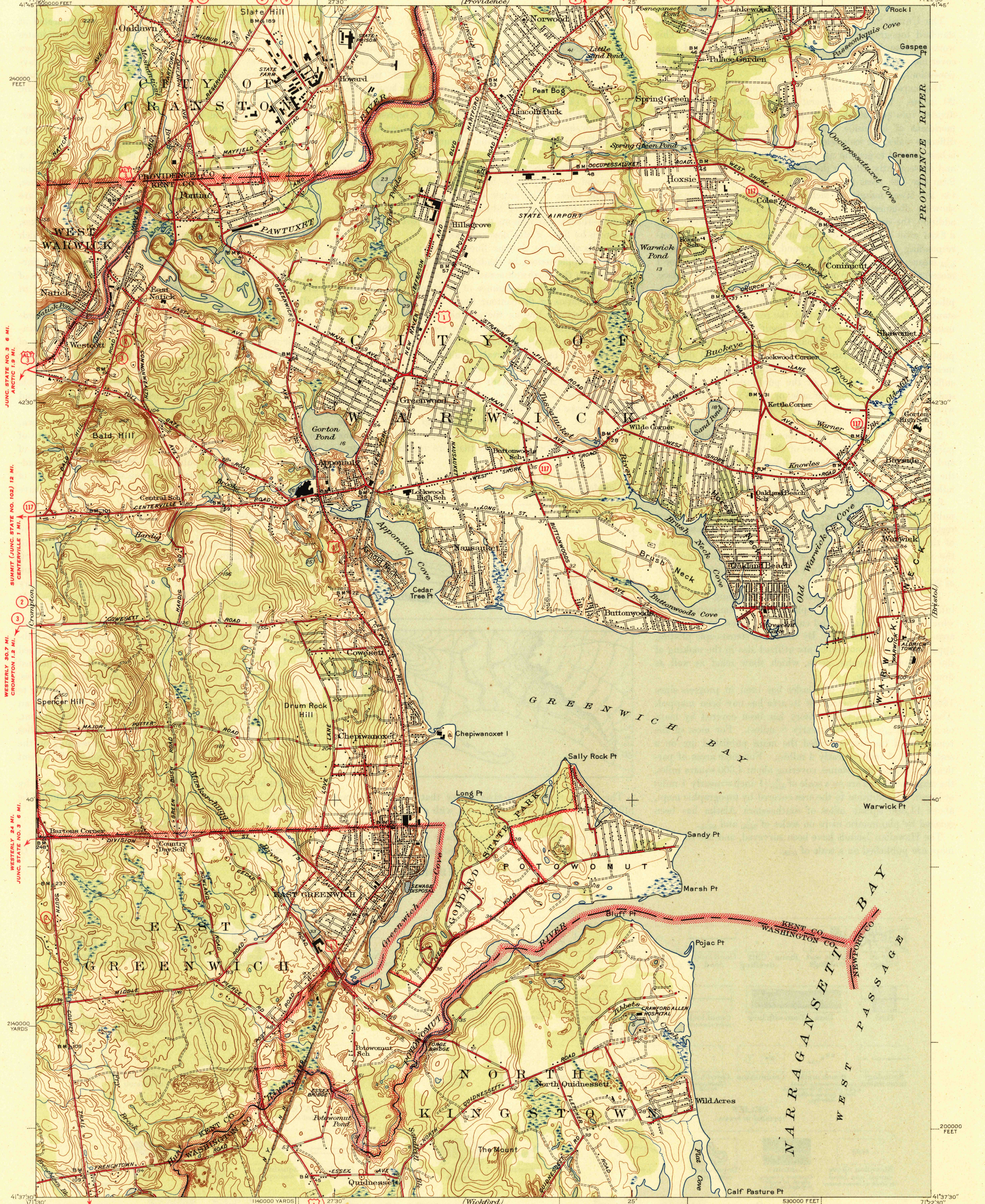


UNITED STATES
DEPARTMENT OF THE INTERIOR
GEOLOGICAL SURVEY

WAR DEPARTMENT
CORPS OF ENGINEERS, U. S. ARMY
(Providence)

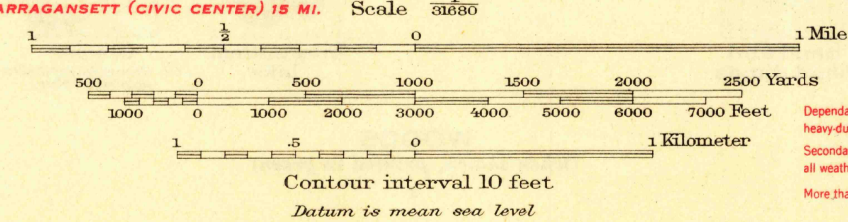
RHODE ISLAND
EAST GREENWICH QUADRANGLE
7 1/2-MINUTE SERIES



North
Junc. State No. 3 6 MI.
Summit (Junc. State No. 102) 12 MI.
Westerly 24 MI.
Junc. State No. 3 6 MI.

Topography by R. J. Belton and K. G. Karekin
Surveyed in 1942
Wickford Junc. (Junc. State No. 102) 3.8 MI.
Charlestown (Junc. U. S. No. 1) 20.8 MI.

APPROXIMATE MEAN
DECLINATION, 1942



ROAD CLASSIFICATION
1944
Dependable hard-surface
Heavy-duty road
Secondary hard-surface
all weather road
Dirt road
Loose-surface, graded
Unsurfaced, graded
dry weather roads
U. S. Route
State Route
More than two lanes indicated along road with tick at point of change
LARGE LANE

Polyconic projection, 1927 North American datum
5000 yard grid based on U.S. zone system, A
10000 foot grid based on Rhode Island
rectangular coordinate system

EAST GREENWICH, R.I.
Edition of 1944
N4137.5-W7122.5/75