

551 I NE
(CUSTER)

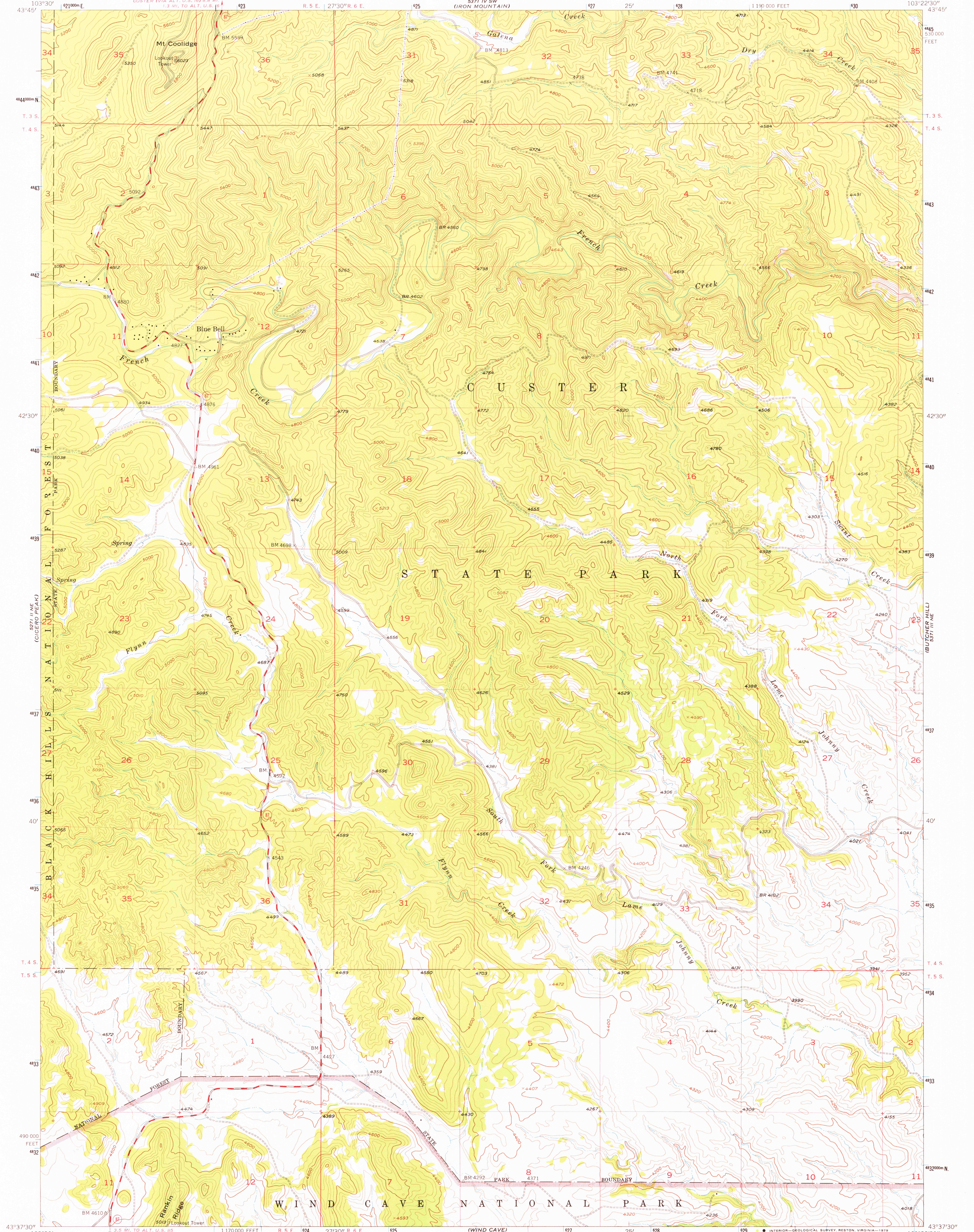
UNITED STATES
DEPARTMENT OF THE INTERIOR
GEOLOGICAL SURVEY



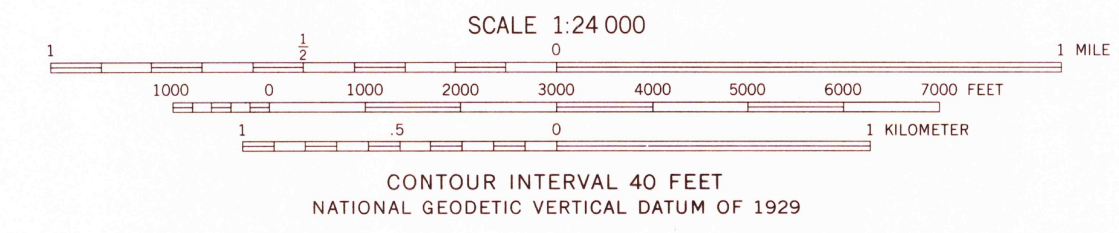
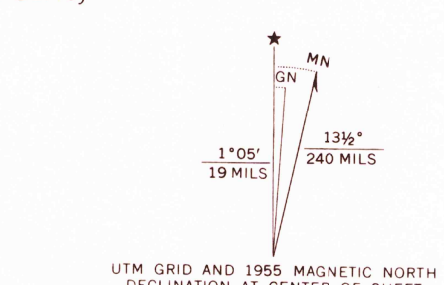
UNITED STATES
ATOMIC ENERGY COMMISSION

MT. COOLIDGE QUADRANGLE
SOUTH DAKOTA—CUSTER CO.
7.5 MINUTE SERIES (TOPOGRAPHIC)

551 IV SE
(HAYWARD)



Mapped, edited, and published by the Geological Survey
Control by USGS and USC&GS
Topography from aerial photographs by multiplex methods
Aerial photographs taken 1953. Field check 1955
Polyconic projection. 1927 North American datum
10,000-foot grid based on South Dakota coordinate system,
south zone
Unchecked elevations are shown in brown
1000-meter Universal Transverse Mercator grid ticks,
zone 13, shown in blue
Map photoinspected 1976
No major culture or drainage changes observed
There may be private inholdings within the boundaries of
the National or State reservations shown on this map



ROAD CLASSIFICATION
Heavy duty ——— Light-duty ———
Medium-duty ——— Unimproved dirt ———
U.S. Route ——— State Route ———

THIS MAP COMPLIES WITH NATIONAL MAP ACCURACY STANDARDS
FOR SALE BY U.S. GEOLOGICAL SURVEY, DENVER, COLORADO 80225, OR RESTON, VIRGINIA 22092
A FOLDER DESCRIBING TOPOGRAPHIC MAPS AND SYMBOLS IS AVAILABLE ON REQUEST

MT. COOLIDGE, S. DAK.
N4337.5-W10322.5/7.5
1955
PHOTOINSPECTED 1976
AMS 551 III NW—SERIES V883

APR 16 1978

2300