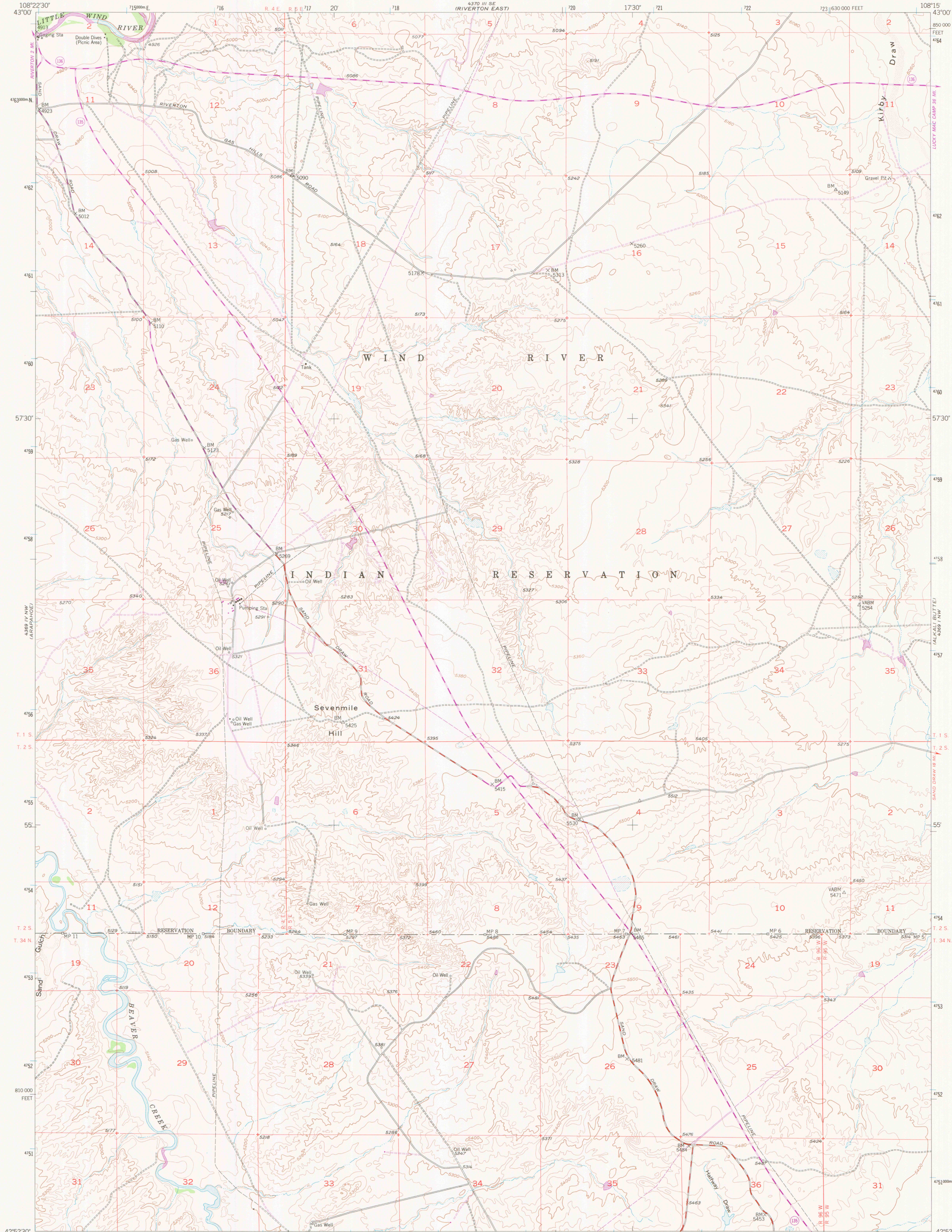


UNITED STATES  
DEPARTMENT OF THE INTERIOR  
GEOLOGICAL SURVEY

ARAPAHOE NE QUADRANGLE  
WYOMING-FREMONT CO  
7.5 MINUTE SERIES (TOPOGRAPHIC)



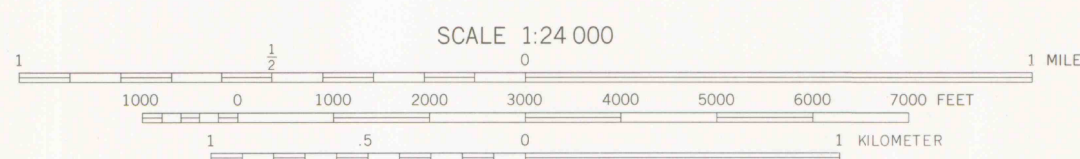
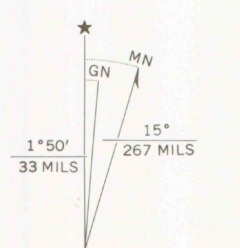
Mapped, edited, and published by the Geological Survey  
as part of the Department of the Interior program  
for the development of the Missouri River Basin

Control by USGS and NOS/NOAA

Topography from aerial photographs by multiplex methods  
Aerial photographs taken 1949. Field check 1953  
Revised 1958

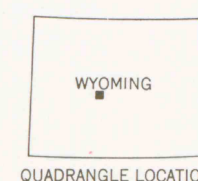
Polycyclic projection. 1927 North American datum  
10,000-foot grid based on Wyoming coordinate system,  
west central zone  
1000 meter Universal Transverse Mercator grid ticks,  
zone 12, shown in blue

Revisions shown in purple compiled from aerial photographs taken  
1975. Map edited 1978. This information not field checked



CONTOUR INTERVAL 20 FEET  
NATIONAL GEODETIC VERTICAL DATUM OF 1929

THIS MAP COMPLIES WITH NATIONAL MAP ACCURACY STANDARDS  
FOR SALE BY U. S. GEOLOGICAL SURVEY, DENVER, COLORADO 80225, OR RESTON, VIRGINIA 22092  
A FOLDER DESCRIBING TOPOGRAPHIC MAPS AND SYMBOLS IS AVAILABLE ON REQUEST



ROAD CLASSIFICATION  
Medium-duty ——— Light-duty ———  
Unimproved dirt ———  
State Route

ARAPAHOE NE, WYO.  
N4252.5—W10815/7.5

1958  
PHOTOREVISED 1978  
DMA 4369 IV NE—SERIES W874