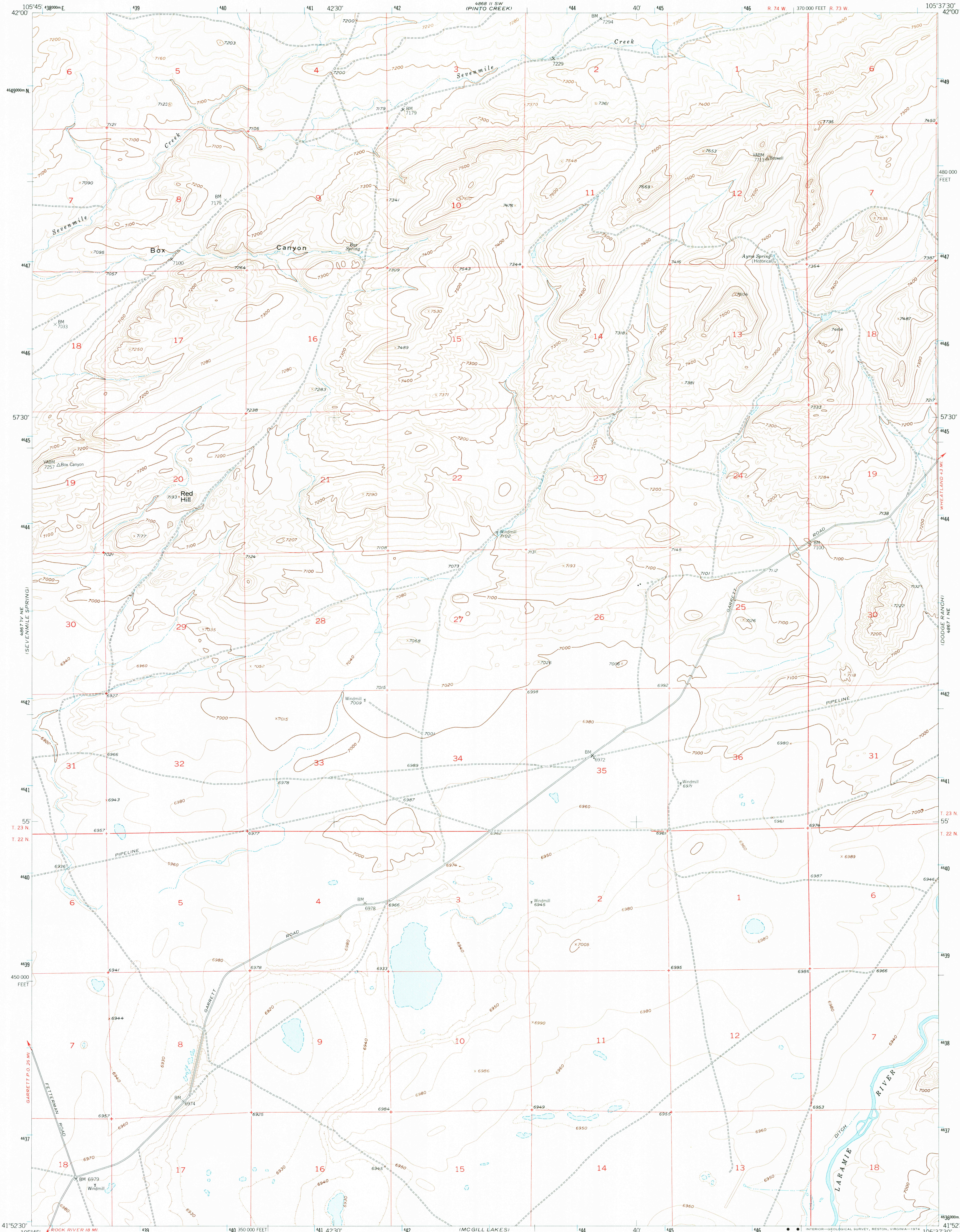
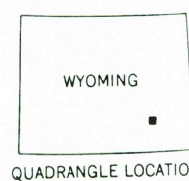
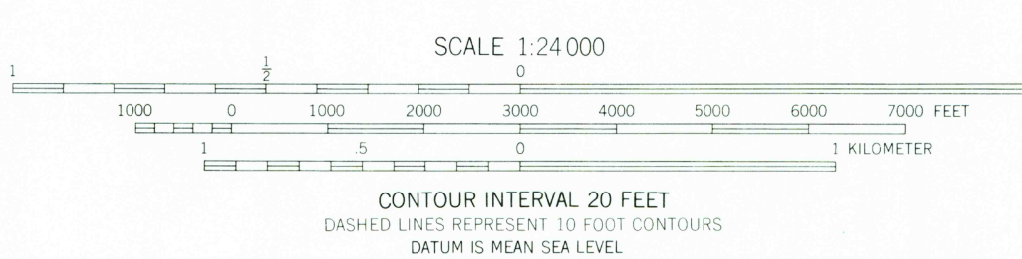
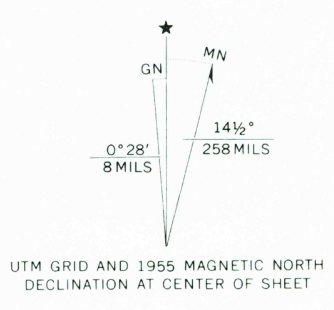


UNITED STATES  
DEPARTMENT OF THE INTERIOR  
GEOLOGICAL SURVEY

AYRES SPRING QUADRANGLE  
WYOMING-ALBANY CO.  
7.5 MINUTE SERIES (TOPOGRAPHIC)



Mapped, edited, and published by the Geological Survey  
as part of the Department of the Interior program  
for the development of the Missouri River Basin  
Control by USGS and USC&GS  
Topography from aerial photographs by multiplex methods  
and by planetable surveys 1955. Aerial photographs taken 1947  
Polyconic projection. 1927 North American datum  
10,000-foot grid based on Wyoming coordinate system,  
east zone  
Unchecked elevations are shown in brown  
1000-meter Universal Transverse Mercator grid ticks,  
zone 13, shown in blue



ROAD CLASSIFICATION  
Heavy-duty ——— Light-duty ———  
Medium-duty ——— Unimproved dirt ———  
U. S. Route ——— State Route ———

AYRES SPRING, WYO.  
N4152.5-W10537.5/7.5  
1955  
AMS 4867 I NW-SERIES V874

RETURN TO:  
USGS AND HISTORICAL MAP ARCHIVES  
FEB 05 1974