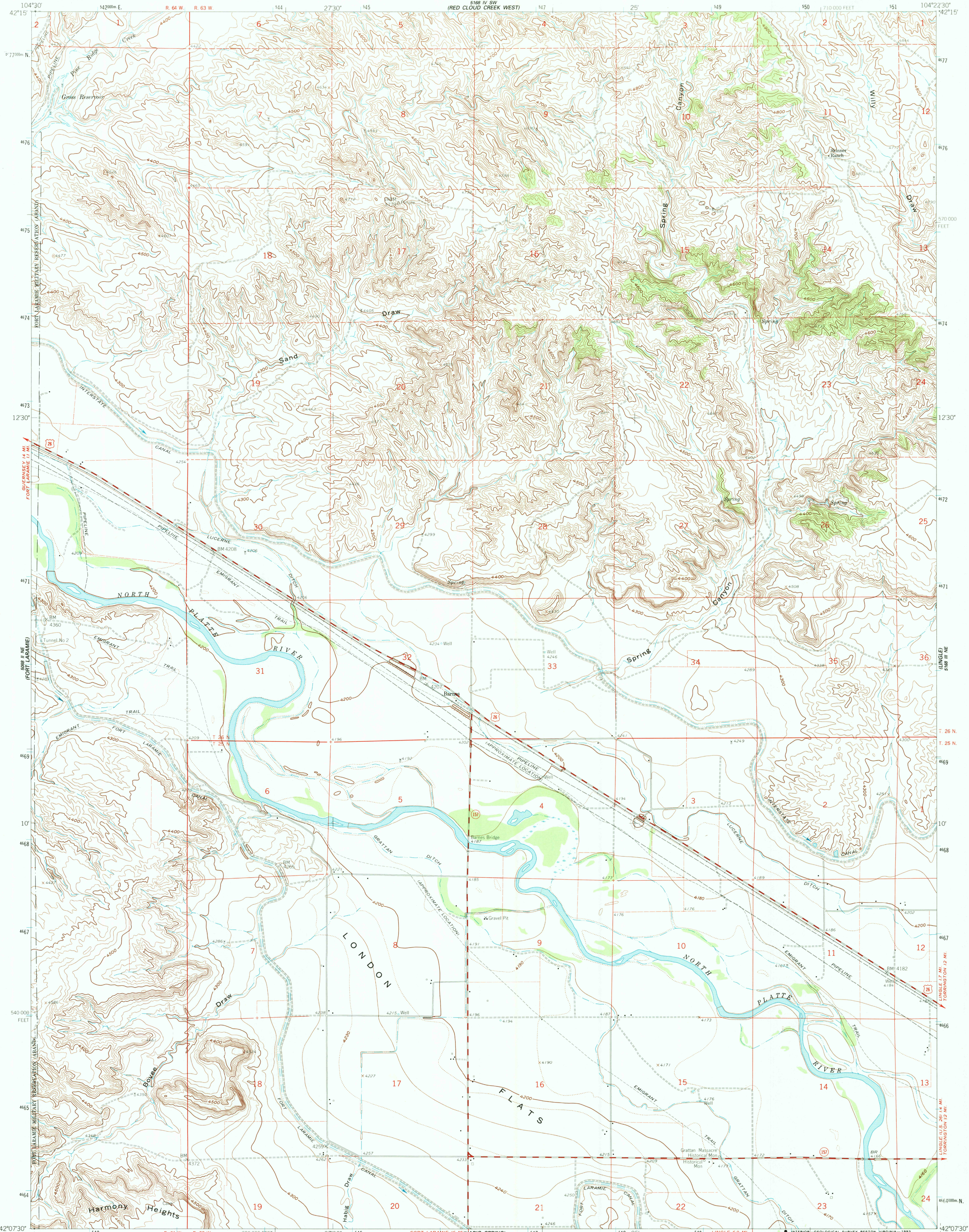


UNITED STATES
DEPARTMENT OF THE INTERIOR
GEOLOGICAL SURVEY

BARNES QUADRANGLE
WYOMING-GOSHEN CO.
7.5 MINUTE SERIES (TOPOGRAPHIC)



Produced by the United States Geological Survey as part of the Department of the Interior program for the development of the Missouri River Basin Control by USGS and NOS/NOAA

Compiled from aerial photographs taken 1957
Topography by plane-table surveys 1960

North American Datum of 1927 (NAD 27). Projection and 10,000-foot grid ticks: Wyoming Coordinate System, east zone (Transverse Mercator). 1000-meter Universal Transverse Mercator grid ticks, zone 13, shown in blue

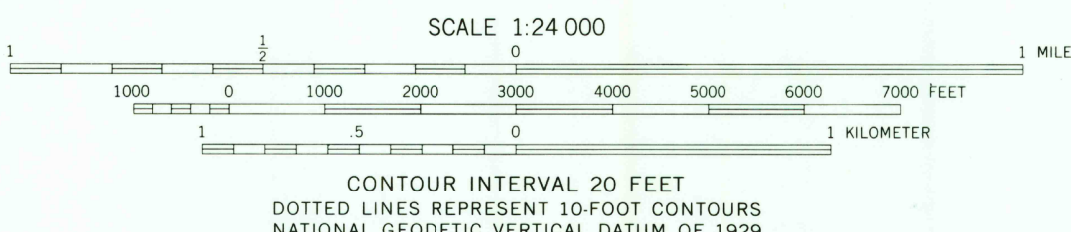
The difference between NAD 27 and North American Datum of 1983 (NAD 83) for 7.5 minute intersections is given in USGS Bulletin 1875. The NAD 83 is shown by dashed corner ticks

Fine red dashed lines indicate selected fence lines

Certain land lines are omitted because of insufficient data

Area covered by dashed light-blue pattern is subject to controlled inundation to 4325 feet

Photinspected from 1991 source; no major culture or drainage changes observed. Boundaries and names verified 1993

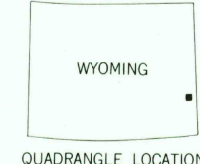


THIS MAP COMPLIES WITH NATIONAL MAP ACCURACY STANDARDS
FOR SALE BY U. S. GEOLOGICAL SURVEY, DENVER, COLORADO 80225, OR RESTON, VIRGINIA 22092
A FOLDER DESCRIBING TOPOGRAPHIC MAPS AND SYMBOLS IS AVAILABLE ON REQUEST

ROAD CLASSIFICATION

Primary highway, hard surface
Secondary highway, hard surface
Light-duty road, hard or improved surface
Unimproved road

Interstate Route
U. S. Route
State Route



BARNES, WYO.
42104-B4-TF-024

1960
MINOR REVISION 1993
DMA 5168 III NW-SERIES V874

