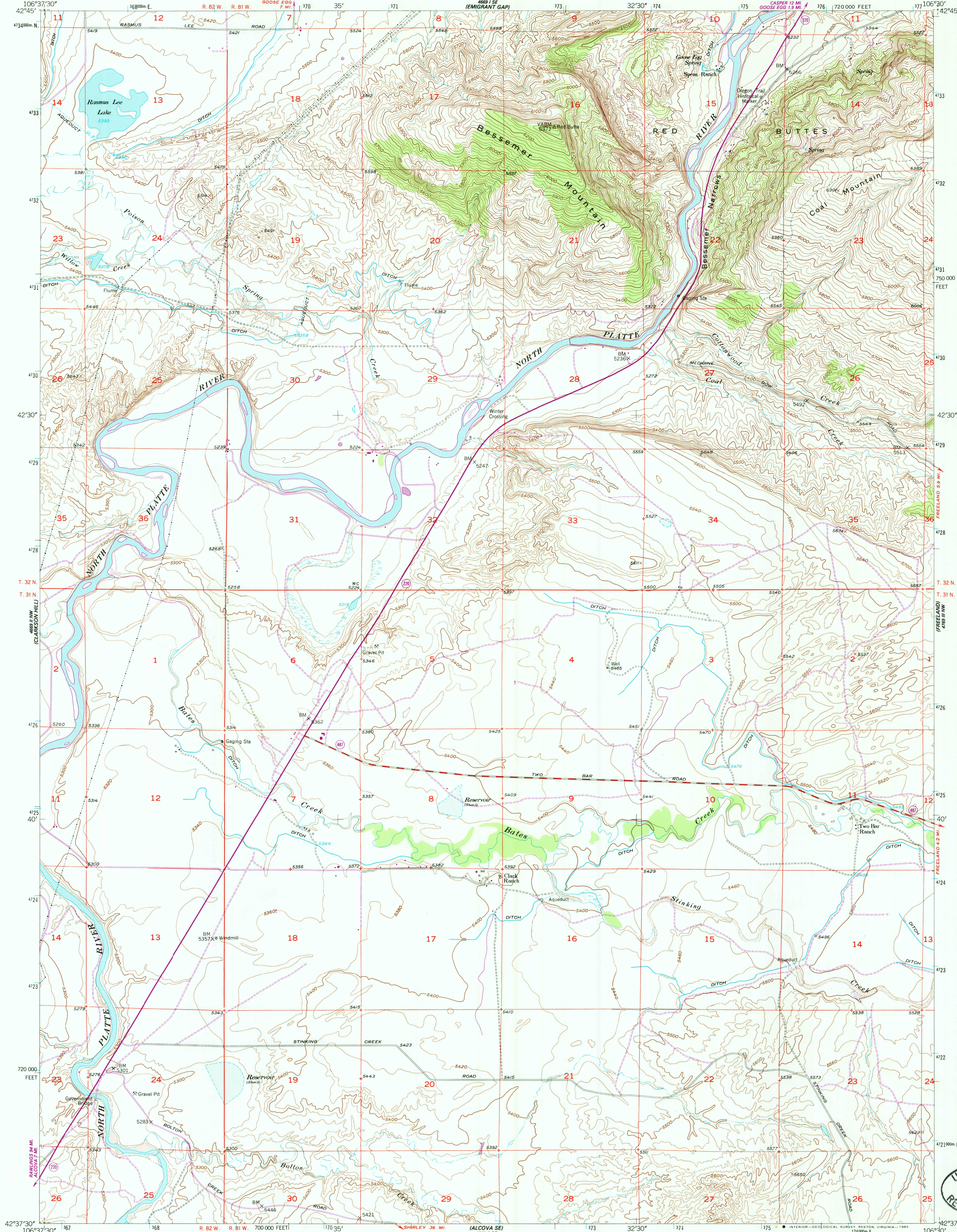


UNITED STATES
DEPARTMENT OF THE INTERIOR
GEOLOGICAL SURVEY

BESSEMER MOUNTAIN QUADRANGLE
WYOMING-NATRONA CO.
7.5 MINUTE SERIES (TOPOGRAPHIC)



Mapped, edited, and published by the Geological Survey as part of the Department of the Interior program for the development of the Missouri River Basin.

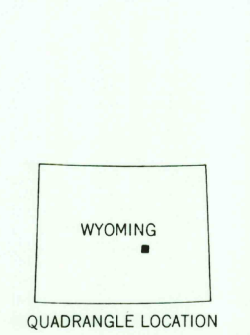
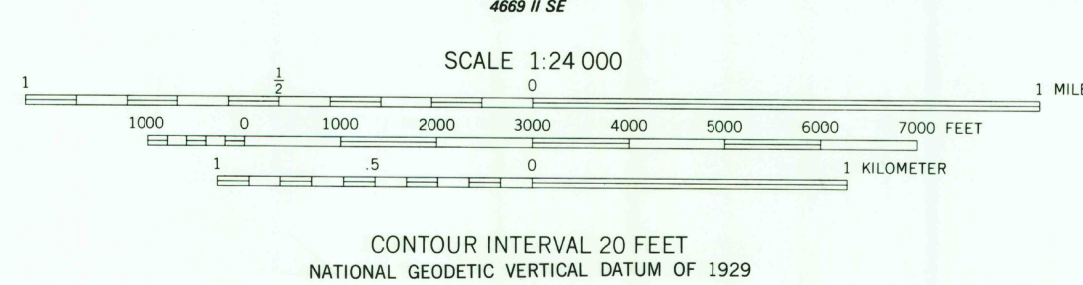
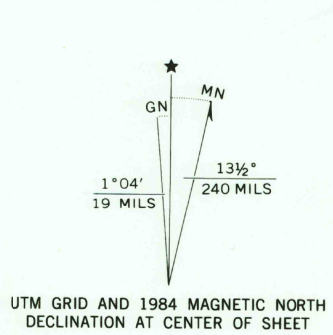
Control by USGS and NOS/NOAA

Topography from aerial photographs by multiplex methods 1950. Aerial photographs taken 1947. Field check 1951.

Polyconic projection. 1927 North American Datum. 10,000-foot grid based on Wyoming coordinate system, east central zone.

1000-meter Universal Transverse Mercator grid ticks, zone 13, shown in blue.

To place on the predicted North American Datum 1983 move the projection lines 8 meters north and 50 meters east as shown by dashed corner ticks.



ROAD CLASSIFICATION

Heavy-duty 4 LANE 6 LANE Light-duty

Medium-duty 4 LANE 6 LANE Unimproved dirt

U. S. Route State Route

BESSEMER MOUNTAIN, WYO.
42106-F5-TF-024

1951
PHOTOREVISED 1984
DMA 4669 II NE-SERIES V874

USGS NMD RES
DEC 12 1985
REFERENCE COLLECTION