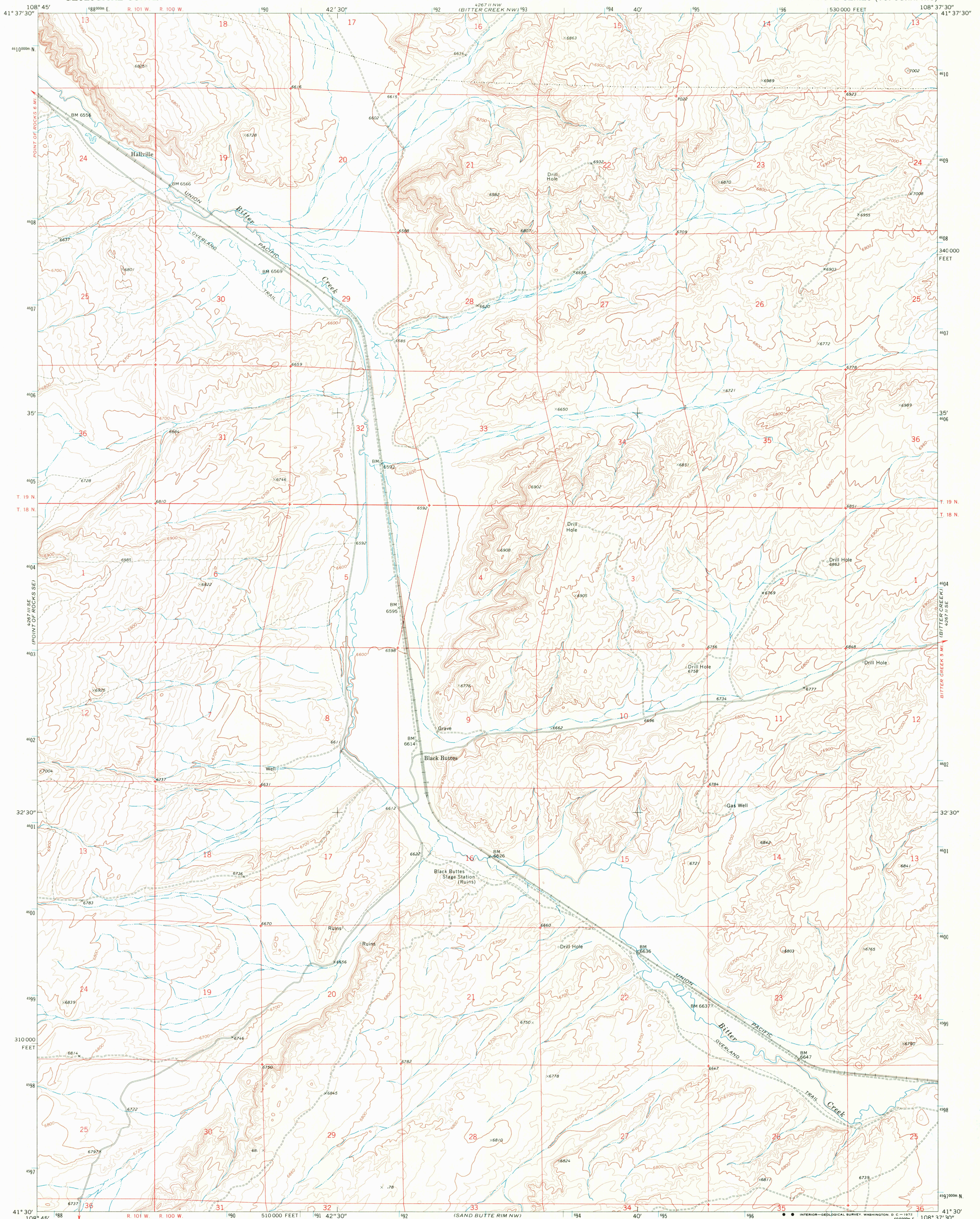


UNITED STATES  
DEPARTMENT OF THE INTERIOR  
GEOLOGICAL SURVEY

BLACK BUTTES QUADRANGLE  
WYOMING-SWEETWATER CO.  
7.5 MINUTE SERIES (TOPOGRAPHIC)

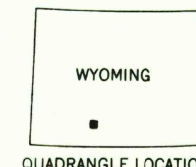
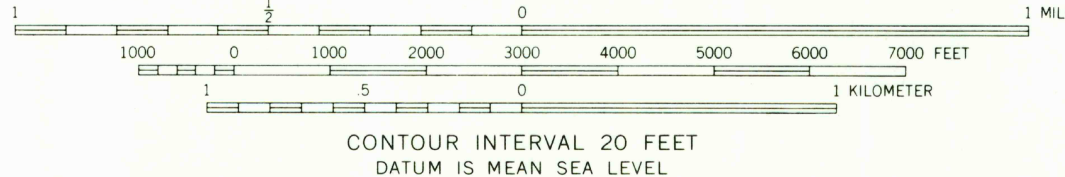
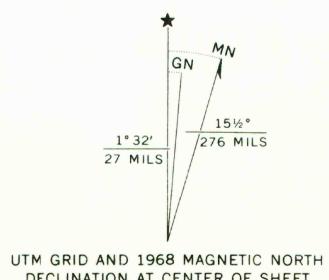


Mapped, edited, and published by the Geological Survey

Control by USGS and USC&GS

Topography by photogrammetric methods from aerial photographs taken 1967. Field checked 1968

Polyconic projection. 1927 North American datum  
10,000-foot grid based on Wyoming coordinate system,  
west central zone  
1000-meter Universal Transverse Mercator grid ticks,  
zone 12, shown in blue



ROAD CLASSIFICATION  
Light-duty road, all weather, Unimproved road, fair or dry weather  
improved surface weather

BLACK BUTTES, WYO.  
N4130-W10837.5/7.5

1968

AMS 4267 II SW-SERIES 8784

THIS MAP COMPLIES WITH NATIONAL MAP ACCURACY STANDARDS  
FOR SALE BY U.S. GEOLOGICAL SURVEY, DENVER, COLORADO 80225, OR WASHINGTON, D. C. 20242  
A FOLDER DESCRIBING TOPOGRAPHIC MAPS AND SYMBOLS IS AVAILABLE ON REQUEST

RETURN TO:  
USGS NAD HISTORICAL MAP ARCHIVES

APR 3 1972

2245

USGS  
HISTORICAL FILE  
TOPOGRAPHIC DIVISION