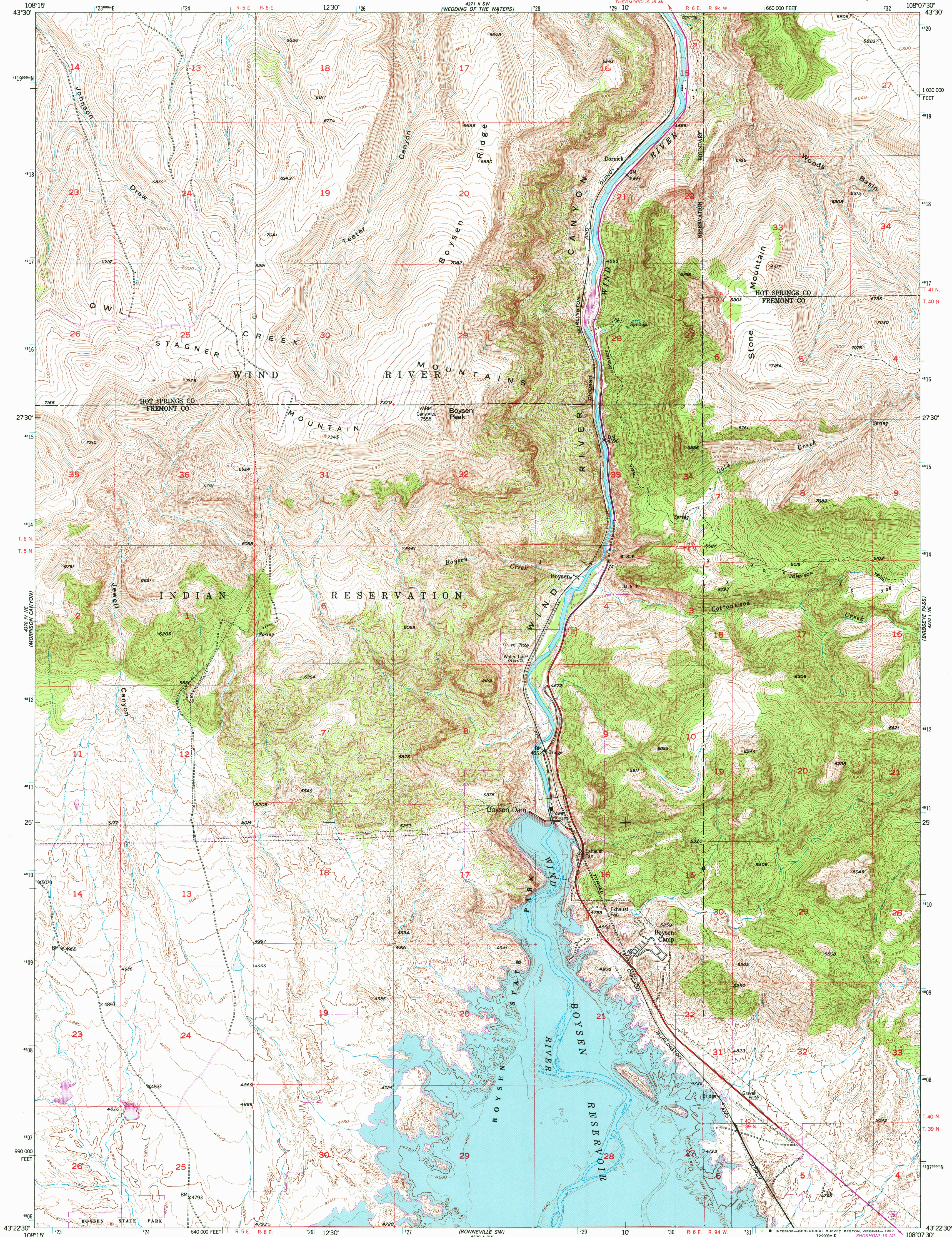


UNITED STATES
DEPARTMENT OF THE INTERIOR
GEOLOGICAL SURVEY

BOYSEN QUADRANGLE
WYOMING
7.5 MINUTE SERIES (TOPOGRAPHIC)



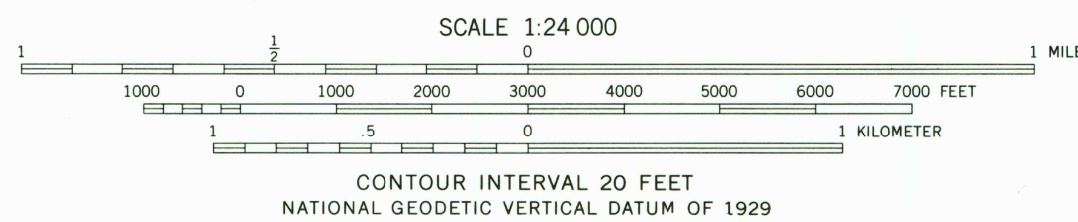
Mapped, edited, and published by the Geological Survey
as part of the Department of the Interior program
for the development of the Missouri River Basin
Control by USGS and NOS/NOAA

Topography from aerial photographs by multiplex methods
Aerial photographs taken 1948. Field check 1951

Polycyclic projection. 1927 North American datum
10,000-foot grid based on Wyoming coordinate system,
west central zone
1000-meter Universal Transverse Mercator grid ticks,
zone 12, shown in blue
Dashed land lines indicate approximate locations

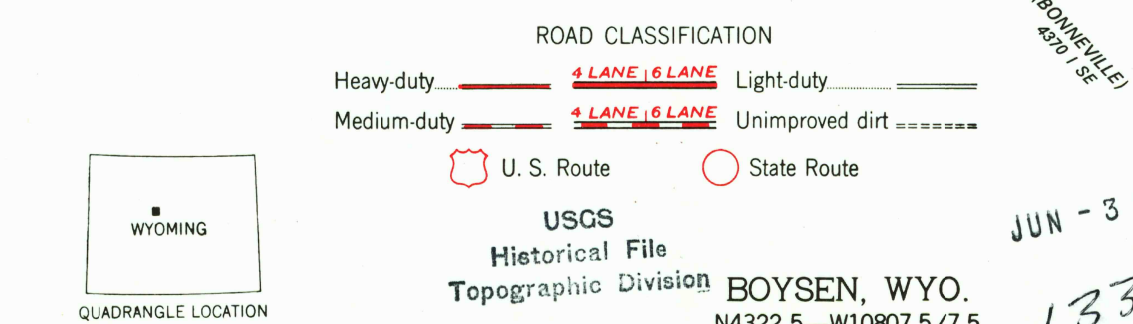
R. 5 E. and R. 6 E. based on Wind River Meridian
T. 5 N. and T. 6 N. based on Wind River Base Line
R. 94 W. based on 6th Principal Meridian
T. 39 N., T. 40 N., and T. 41 N. based on Base Line (40th Parallel)

There may be private inholdings within the boundaries of
the National or State reservations shown on this map



THIS MAP COMPLIES WITH NATIONAL MAP ACCURACY STANDARDS

FOR SALE BY U. S. GEOLOGICAL SURVEY, DENVER, COLORADO 80225, OR RESTON, VIRGINIA 22092
A FOLDER DESCRIBING TOPOGRAPHIC MAPS AND SYMBOLS IS AVAILABLE ON REQUEST



1951
PHOTOREVISED 1978
DMA 4370 1 NW-SERIES V874

RETURN TO:
USGS AND HISTORICAL MAP ARCHIVES