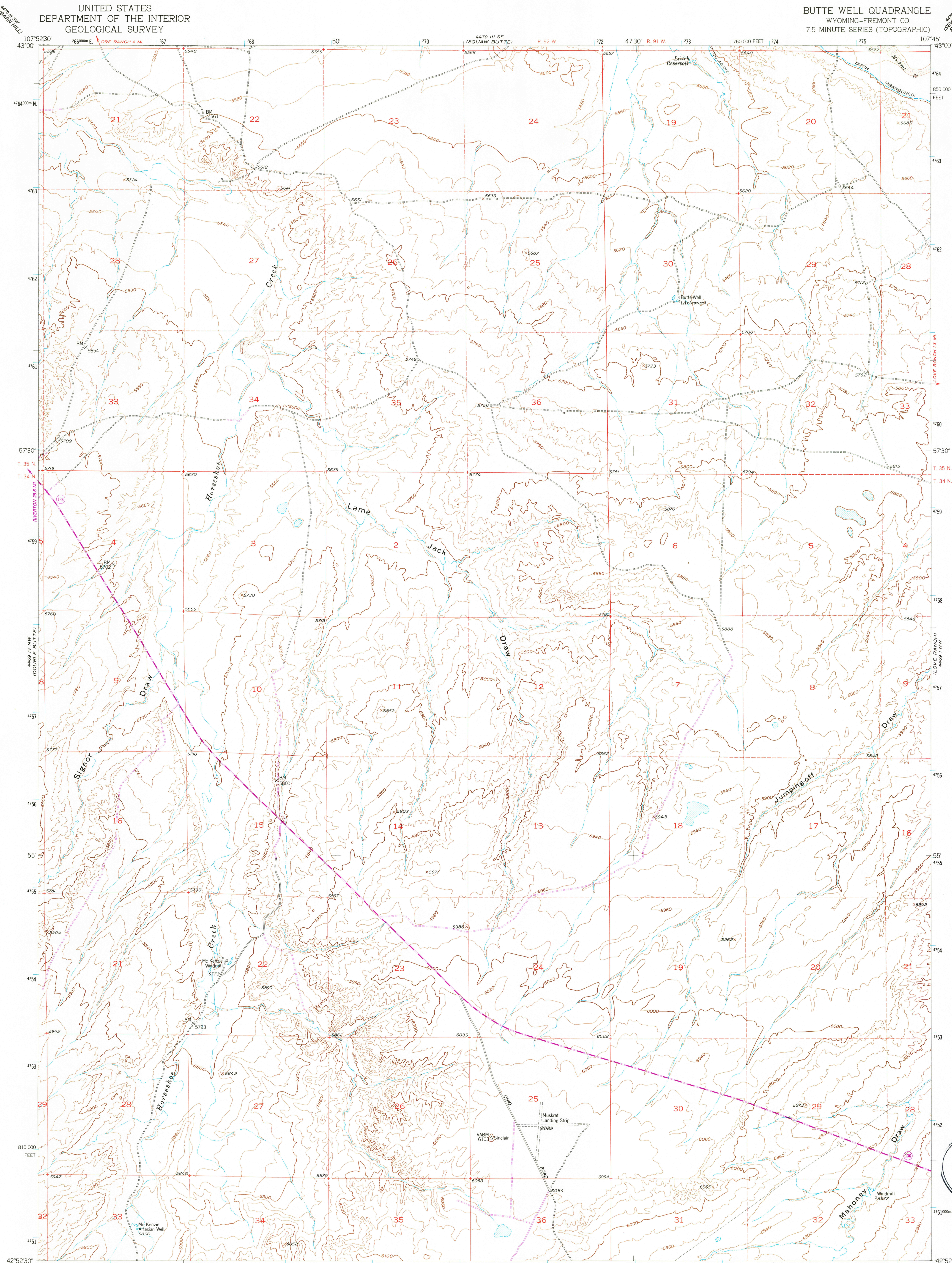
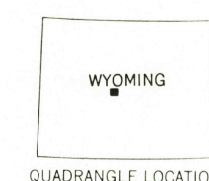
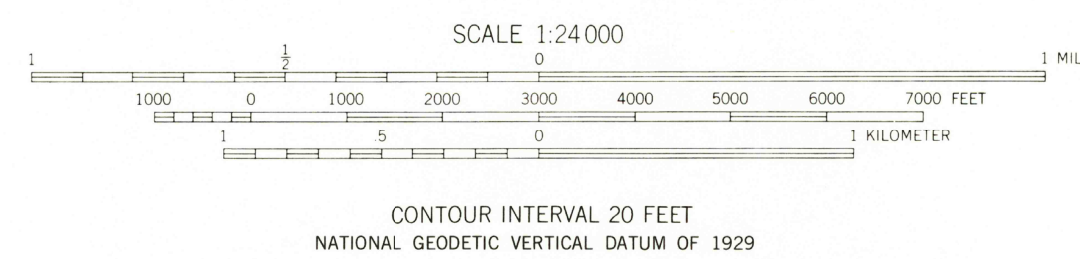
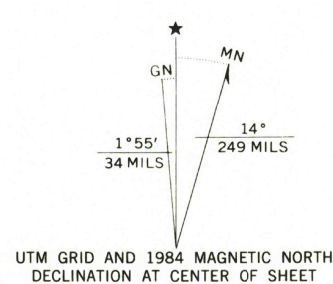


UNITED STATES
DEPARTMENT OF THE INTERIOR
GEOLOGICAL SURVEY

BUTTE WELL QUADRANGLE
WYOMING-FREMONT CO.
7.5 MINUTE SERIES (TOPOGRAPHIC)



Maped, edited, and published by the Geological Survey as part of the Department of the Interior program for the development of the Missouri River Basin Control by USGS and NOS/NOAA
Topography from aerial photographs by Kelsh Plotter methods
Aerial photographs taken 1949. Field check 1952
Polyconic projection. 1927 North American Datum
10,000-foot grid based on Wyoming coordinate system, west central zone
Dashed land lines indicate approximate locations
1000 meter Universal Transverse Mercator grid ticks, zone 13, shown in blue
To place on the predicted North American Datum 1983 move the projection lines 8 meters north and 53 meters east as shown by dashed corner ticks



ROAD CLASSIFICATION
Heavy-duty 4 LANE 16 LANE Light-duty
Medium-duty 4 LANE 16 LANE Unimproved dirt
U. S. Route State Route

BUTTE WELL, WYO.
42107-H7-TF-024

Revisions shown in purple compiled from aerial photographs taken 1980 and other source data. This information not field checked. Map edited 1984

1952
PHOTOREVISED 1984
DMA 4469 IV NE-SERIES V674

USGS NMD HISTORICAL MAP
MAR 28 1986
REC'D FILE COPY