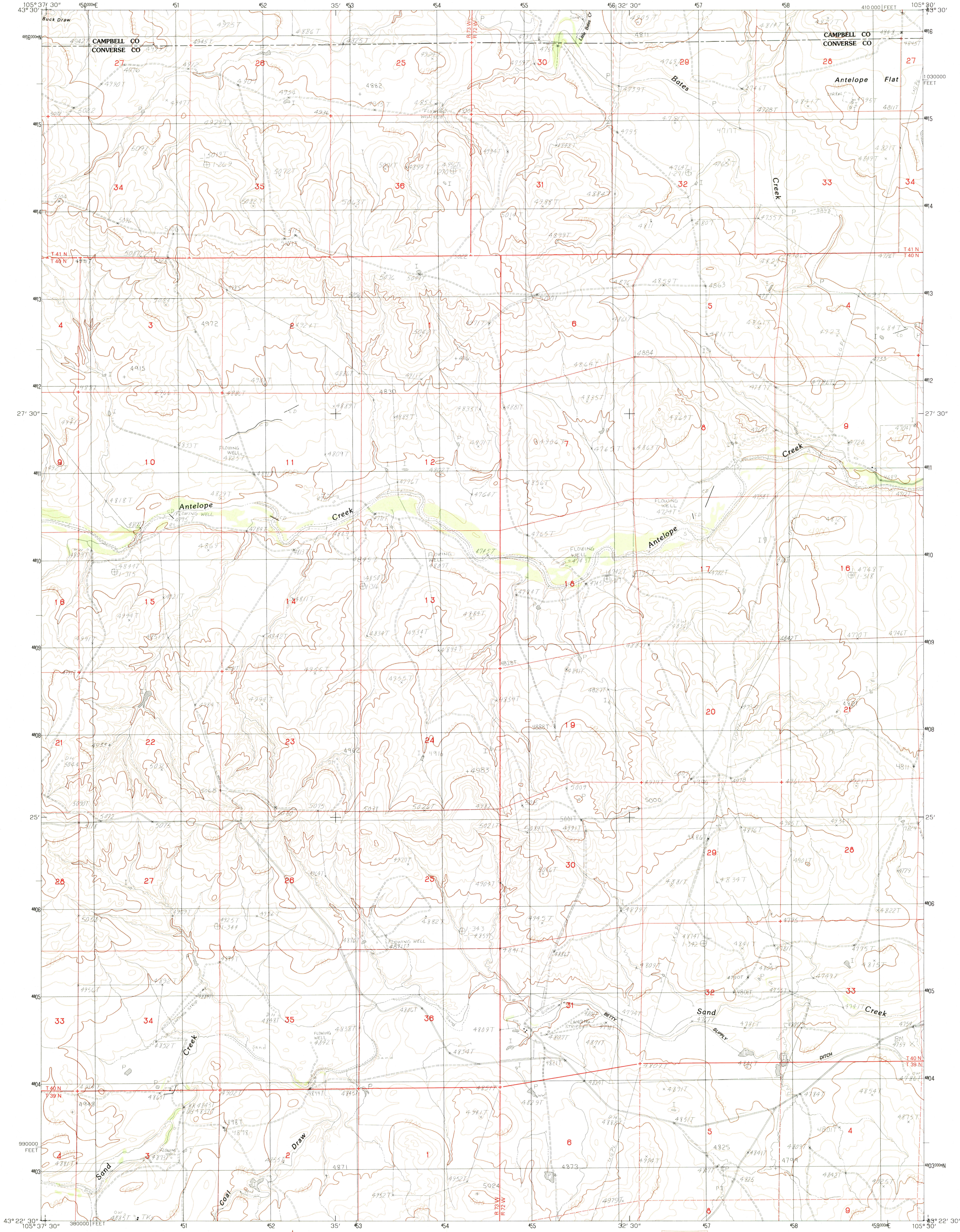


UNITED STATES
DEPARTMENT OF THE INTERIOR
GEOLOGICAL SURVEY

COAL DRAW NORTH QUADRANGLE
WYOMING
7.5 MINUTE SERIES (TOPOGRAPHIC)



PRODUCED BY THE UNITED STATES GEOLOGICAL SURVEY
CONTROL BY USGS, NOS/NOAA
COMPILED FROM AERIAL PHOTOGRAPHS TAKEN 1976
FIELD CHECKED 1977 MAP EDITED 1984
PROJECTION POLYCONIC
GRID: INTERNATIONAL UNIVERSAL TRANSVERSE MERCATOR ZONE 13
1000-FOOT STATE GRID TICS WYOMING, EAST ZONE
UTM GRID DECLINATION 0°29' WEST
1984 MAGNETIC NORTH DECLINATION 1°15' EAST
VERTICAL DATUM NATIONAL GEODETIC VERTICAL DATUM OF 1959
HORIZONTAL DATUM 1927 NORTH AMERICAN DATUM
The difference between 1927 North American Datum and North
American Datum of 1983 (NAD 83) for 7.5 minute intersections
is given in USGS Bulletin 1875. The NAD 83 is shown by
dashed corner ticks
There may be private inholdings within the boundaries of any
Federal and State Reservations shown on this map

PROVISIONAL MAP
Produced from original
manuscript drawings. Infor-
mation shown as of date of
field check. 3

THIS MAP COMPLIES WITH NATIONAL MAP ACCURACY STANDARDS
FOR SALE BY U.S. GEOLOGICAL SURVEY, DENVER, COLORADO 80225
OR RISTON, VIRGINIA 22092

1	2	3	Turnercrest
4	5	6	Betty
7	8	9	Coal Draw South
10	11	12	Alta Creek

ROAD LEGEND
Improved Road
Unimproved Road
Trail
Interstate Route U.S. Route State Route
COAL DRAW NORTH, WYOMING
PROVISIONAL EDITION 1984
43105-1D-1-024

