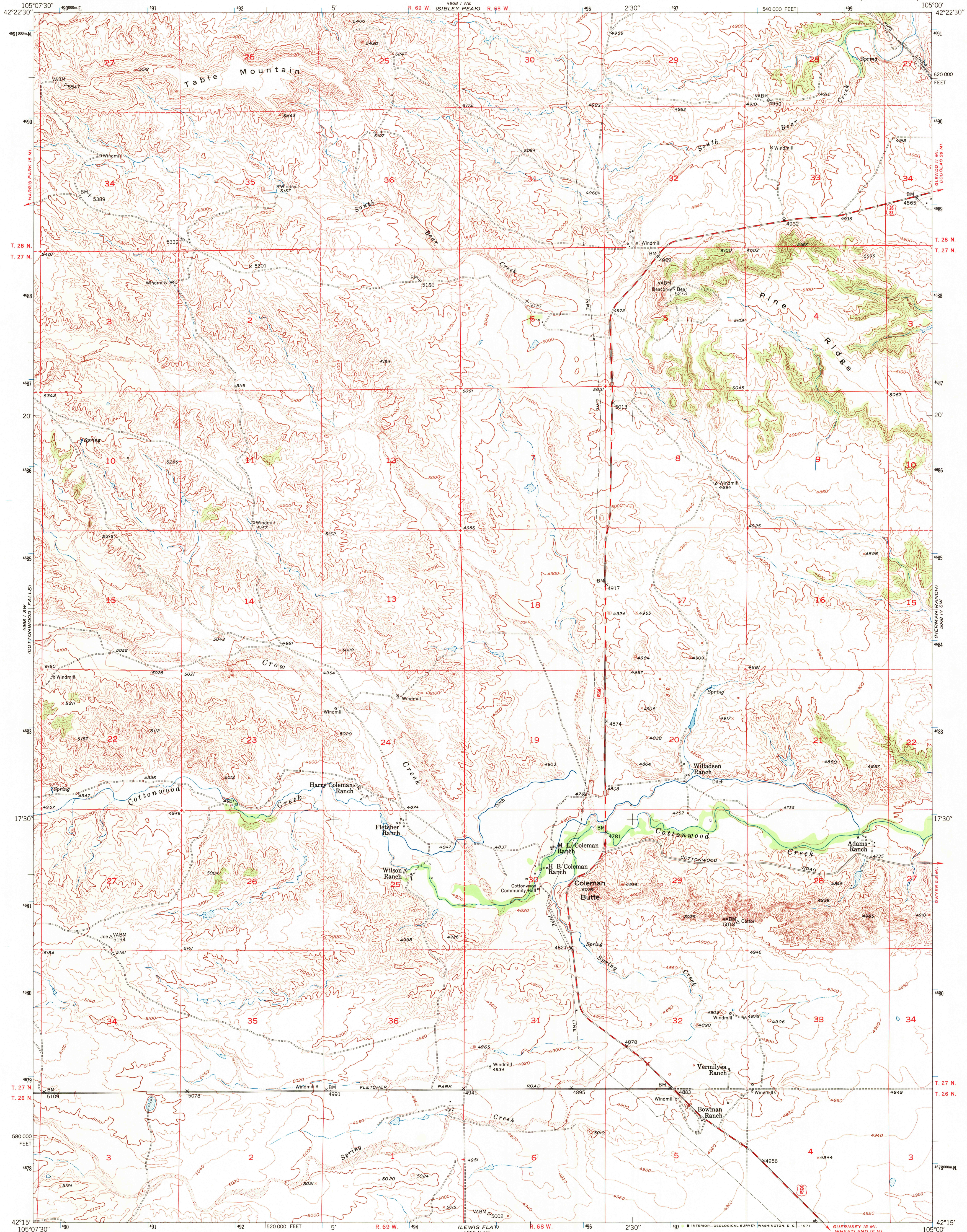


UNITED STATES  
DEPARTMENT OF THE INTERIOR  
GEOLOGICAL SURVEY

COLEMAN BUTTE QUADRANGLE  
WYOMING-PLATTE CO.  
7.5 MINUTE SERIES (TOPOGRAPHIC)



Mapped, edited, and published by the Geological Survey as part of the Department of the Interior program for the development of the Missouri River Basin.

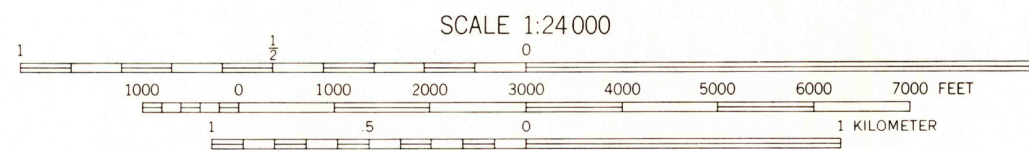
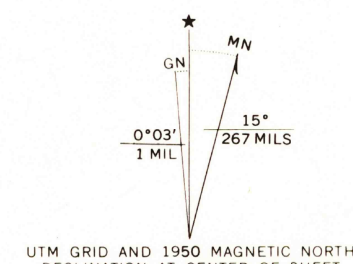
Control by USGS and USC&GS

Topography from aerial photographs by multiplex methods. Aerial photographs taken June 1947 and September 1948. Field check 1950.

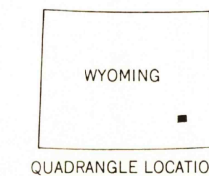
Polyconic projection. 1927 North American datum. 10,000-foot grid based on Wyoming coordinate system, east zone.

Dashed land lines indicate approximate location.

1000-meter Universal Transverse Mercator grid ticks, zone 13, shown in blue.



CONTOUR INTERVAL 20 FEET  
DATUM IS MEAN SEA LEVEL



ROAD CLASSIFICATION

Medium-duty ——— Light-duty ———

Unimproved dirt ———

U.S. Route

COLEMAN BUTTE, WYO.  
N4215-W10500/7.5  
1950  
AMS 4968 1 SE-SERIES W874

RETURN TO:  
USGS AND HISTORICAL MAP ARCHIVES

APR 14 1971

U.S.G.S.

FM 5 COPY  
TOPOGRAPHIC DIVISION