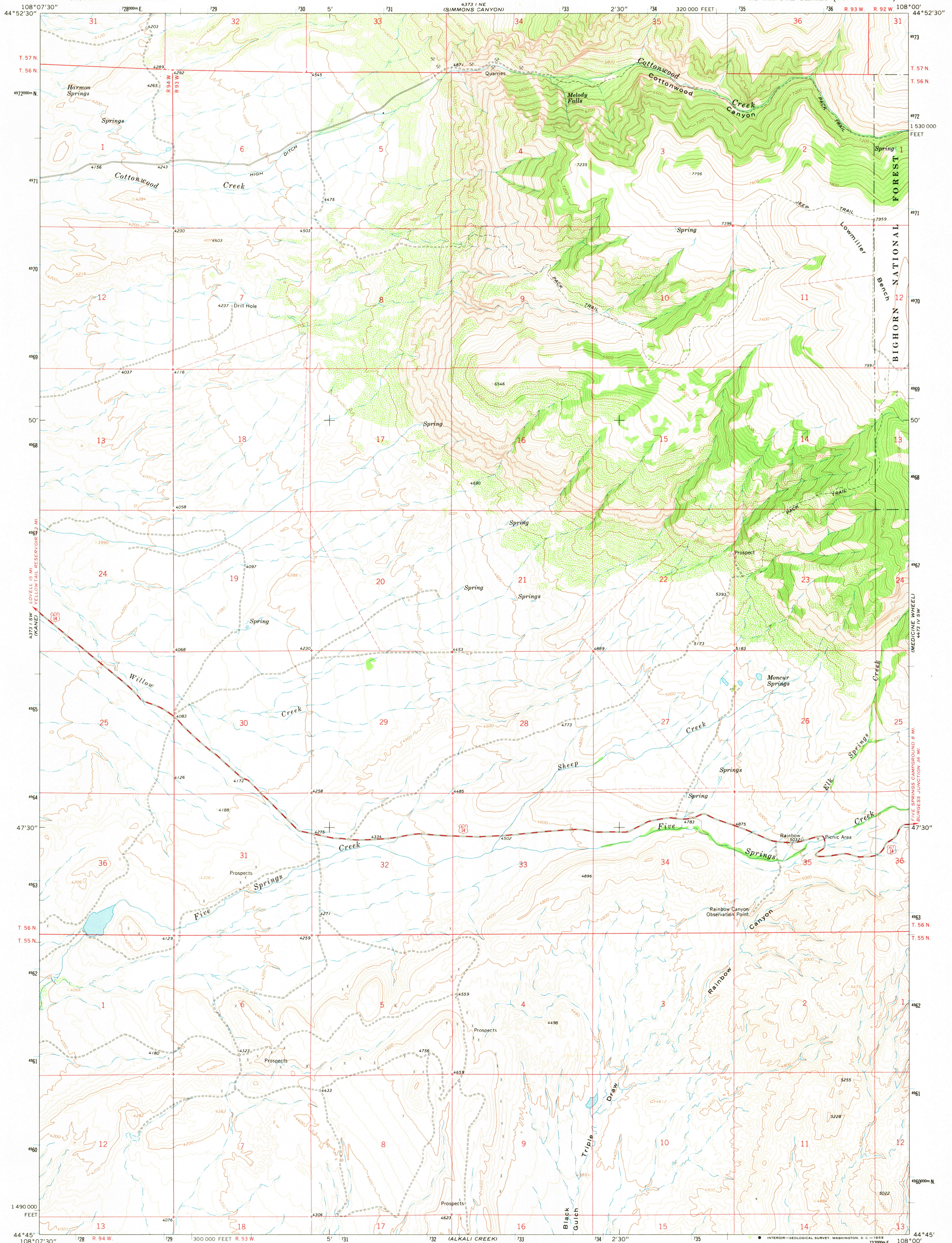


UNITED STATES
DEPARTMENT OF THE INTERIOR
GEOLOGICAL SURVEY

COTTONWOOD CANYON QUADRANGLE
WYOMING—BIG HORN CO.
7.5 MINUTE SERIES (TOPOGRAPHIC)



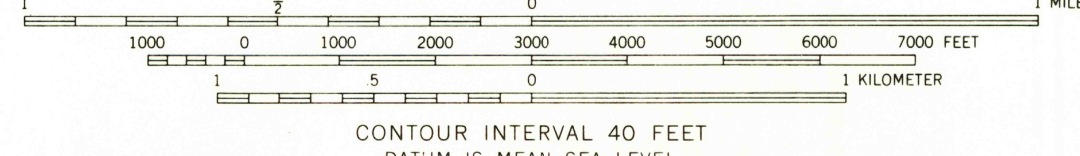
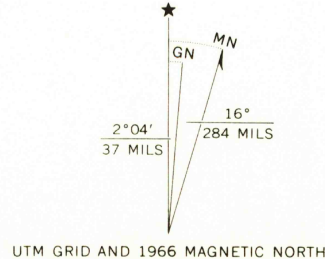
Mapped, edited, and published by the Geological Survey

Control by USGS and USC&GS

Topography by photogrammetric methods from aerial photographs taken 1964. Field checked 1966

Polyconic projection. 1927 North American datum
10,000-foot grid based on Wyoming coordinate system,
east central zone
1000-meter Universal Transverse Mercator grid ticks,
zone 12, shown in blue

Fine red dashed lines indicate selected fence lines
Where omitted, land lines have not been established



ROAD CLASSIFICATION
Medium-duty ——— Light-duty ———
Unimproved dirt ———
U.S. Route



COTTONWOOD CANYON, WYO.
N4445—W10800/7.5

1966

AMS 4373 1 SE—SERIES V874

THIS MAP COMPLIES WITH NATIONAL MAP ACCURACY STANDARDS
FOR SALE BY U. S. GEOLOGICAL SURVEY, DENVER, COLORADO 80225, OR WASHINGTON, D. C. 20242
A FOLDER DESCRIBING TOPOGRAPHIC MAPS AND SYMBOLS IS AVAILABLE ON REQUEST

RETURN TO:
USGS AND HISTORICAL MAP ARCHIVES

SEP 25 1969