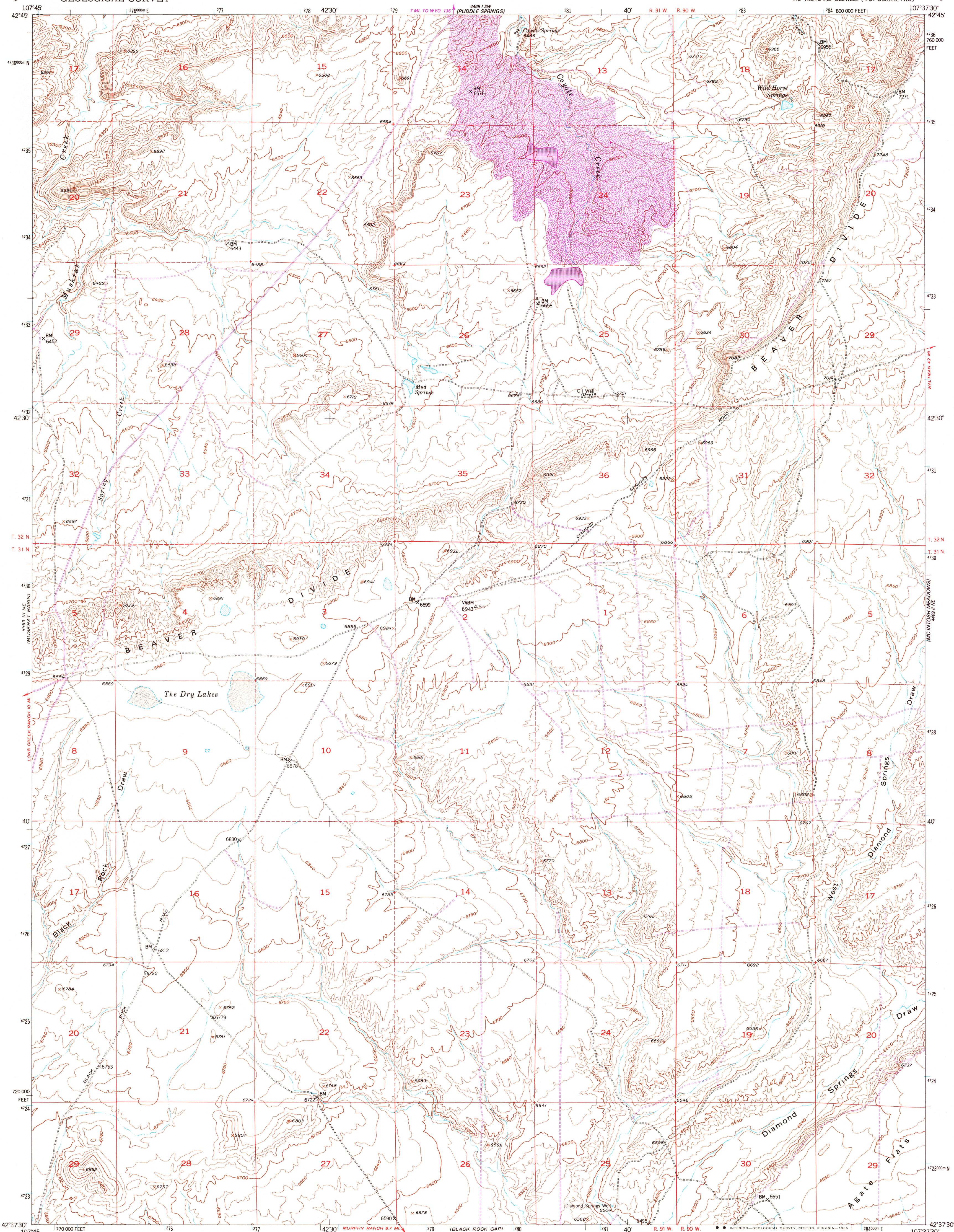


UNITED STATES  
DEPARTMENT OF THE INTERIOR  
GEOLOGICAL SURVEY

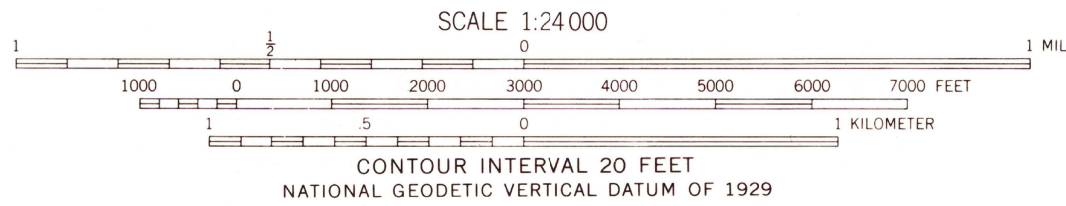
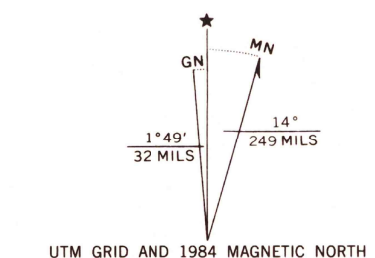
COYOTE SPRINGS QUADRANGLE  
WYOMING-FREMONT CO.  
7.5 MINUTE SERIES (TOPOGRAPHIC)



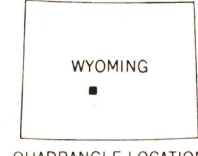
Mapped, edited, and published by the Geological Survey  
as part of the Department of the Interior program  
for the development of the Missouri River Basin

Control by USGS and NOS/NOAA  
Topography from aerial photographs by multiplex methods and  
by plane-table surveys 1952. Aerial photographs taken 1949  
Polyconic projection. 1927 North American Datum  
10,000-foot grid based on Wyoming coordinate system,  
west central zone

Dashed land lines indicate approximate locations  
1000-meter Universal Transverse Mercator grid ticks,  
zone 13, shown in blue  
To place on the predicted North American Datum 1983  
move the projection lines 8 meters north and  
53 meters east as shown by dashed corner ticks



THIS MAP COMPLIES WITH NATIONAL MAP ACCURACY STANDARDS  
FOR SALE BY U. S. GEOLOGICAL SURVEY, DENVER, COLORADO 80225, OR RESTON, VIRGINIA 22092  
A FOLDER DESCRIBING TOPOGRAPHIC MAPS AND SYMBOLS IS AVAILABLE ON REQUEST



ROAD CLASSIFICATION  
Heavy-duty 4 LANE 6 LANE Light-duty  
Medium-duty 4 LANE 6 LANE Unimproved dirt  
U. S. Route State Route

COYOTE SPRINGS, WYO.  
42107-F6-TF-024

1982  
PHOTOREVISED 1984  
DMA 4469 II NW-SERIES V874

USGS NWU RESEARCH  
DEC 12 1985  
REFERENCE COLLECTION