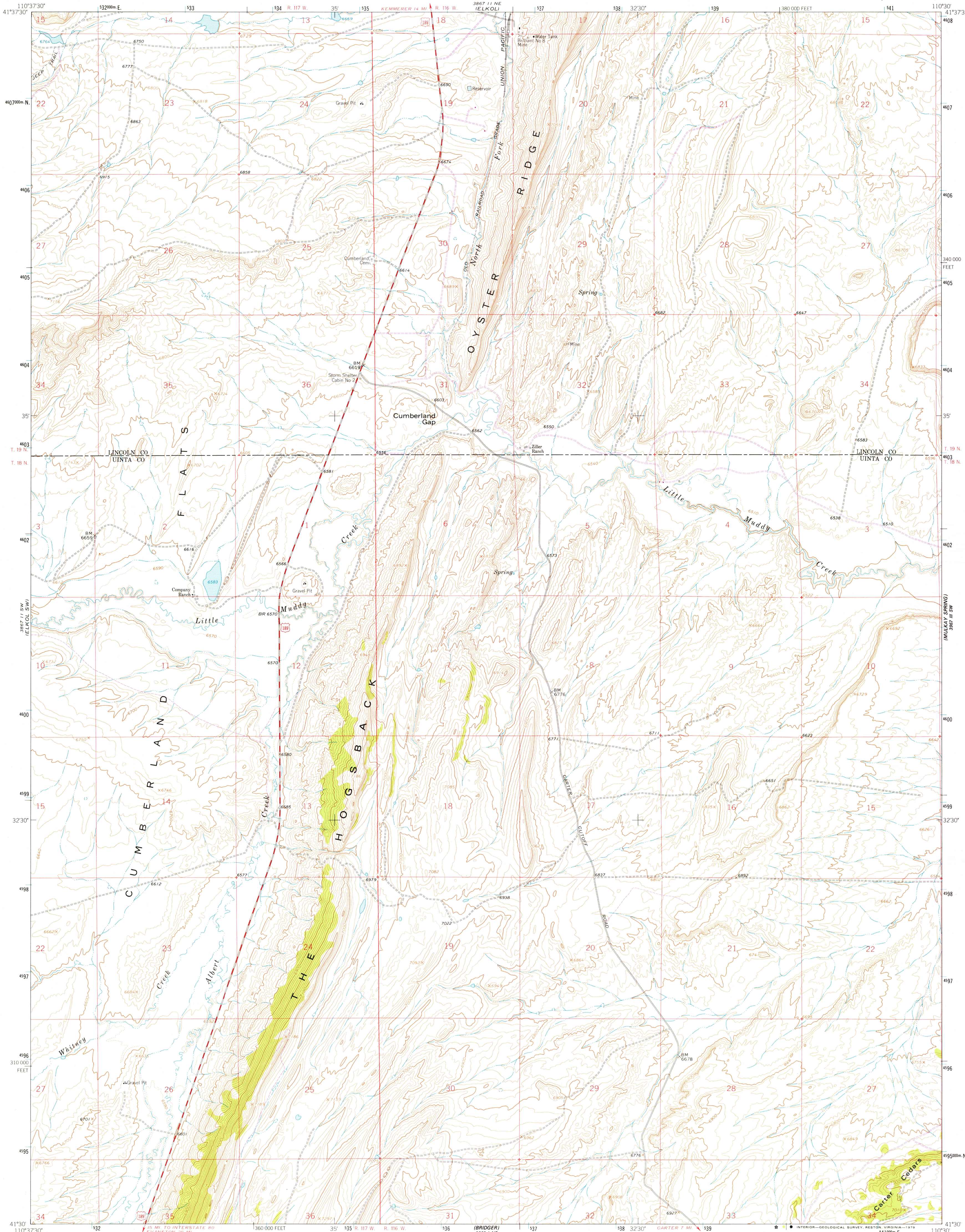


UNITED STATES
DEPARTMENT OF THE INTERIOR
GEOLOGICAL SURVEY

CUMBERLAND GAP QUADRANGLE
WYOMING
7.5 MINUTE SERIES (TOPOGRAPHIC)



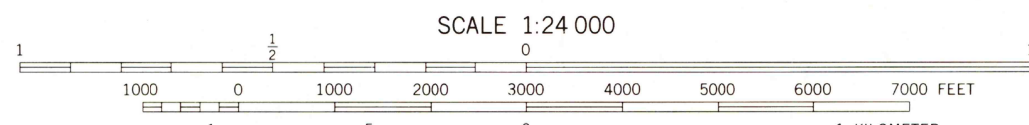
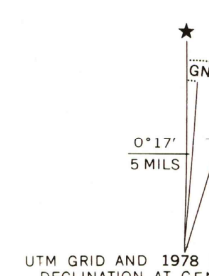
Mapped, edited, and published by the Geological Survey

Control by USGS and NOS/NOAA

Topography by photogrammetric methods from aerial
photographs taken 1961-1962. Field checked 1962

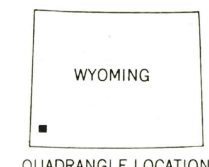
Polyconic projection. 1927 North American datum
10,000-foot grid based on Wyoming coordinate system, west zone
1000-meter Universal Transverse Mercator grid ticks,
zone 12, shown in blue

Revisions shown in purple compiled from aerial photographs
taken 1976 and other source data. This information not
field checked. Map edited 1978



CONTOUR INTERVAL 20 FEET.
DOTTED LINES REPRESENT 10-FOOT CONTOURS
NATIONAL GEODETIC VERTICAL DATUM OF 1929

THIS MAP COMPLIES WITH NATIONAL MAP ACCURACY STANDARDS.
FOR SALE BY U. S. GEOLOGICAL SURVEY, DENVER, COLORADO 80225, OR RESTON, VIRGINIA 22092
A FOLDER DESCRIBING TOPOGRAPHIC MAPS AND SYMBOLS IS AVAILABLE ON REQUEST



USGS
Historical File
Topographic Division

CUMBERLAND GAP, WYO.
N4130-W11030/7.5

1962
PHOTOREVISED 1978
AMS 3867 11 SE-SERIES V874

JUN 18 1979