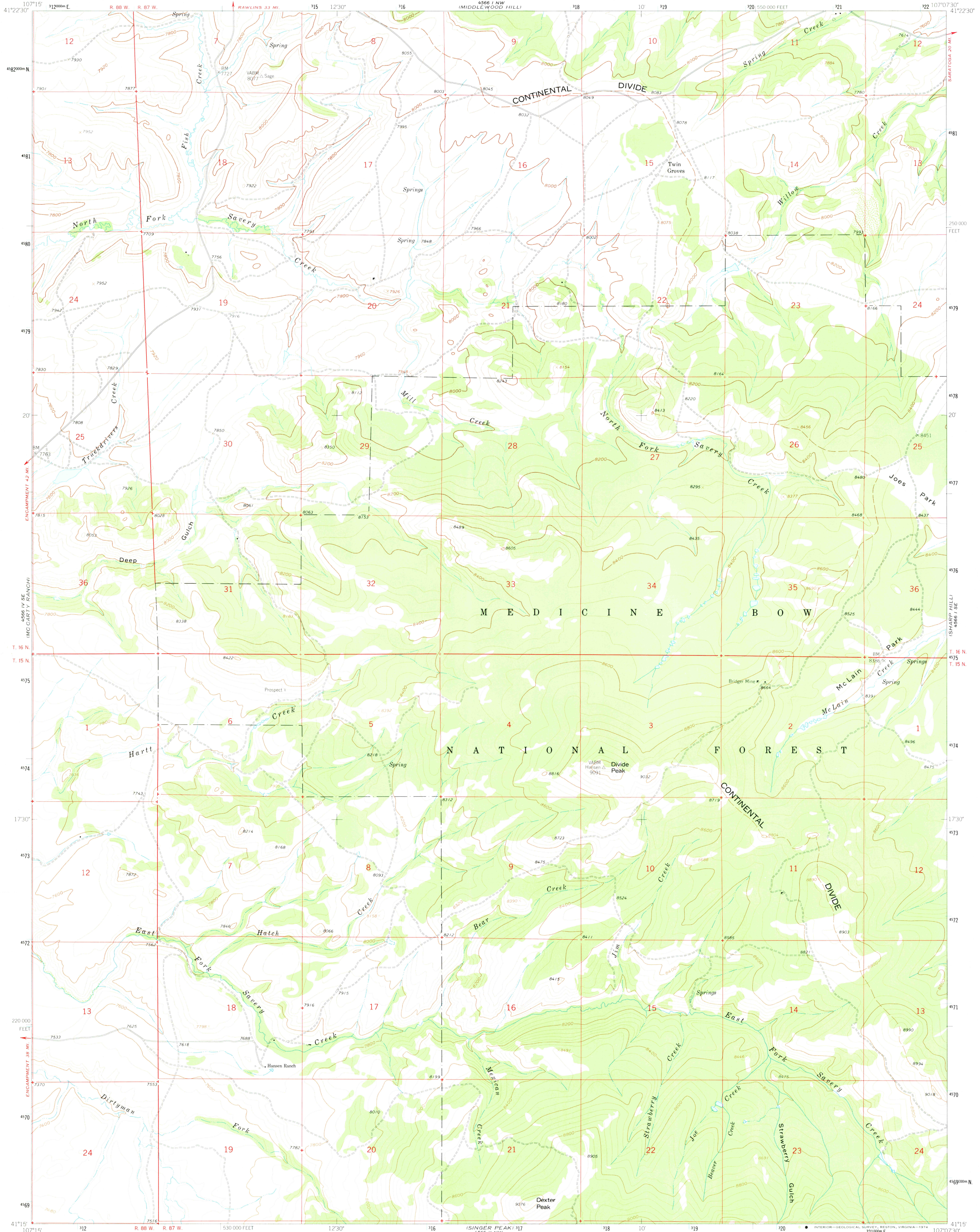


UNITED STATES
DEPARTMENT OF THE INTERIOR
GEOLOGICAL SURVEY

DIVIDE PEAK QUADRANGLE
WYOMING-CARBON CO.
7.5 MINUTE SERIES (TOPOGRAPHIC)

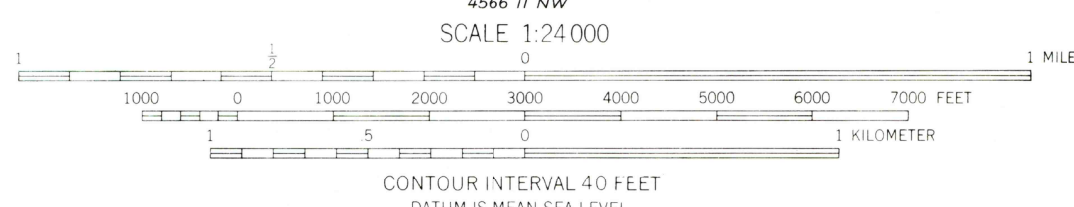
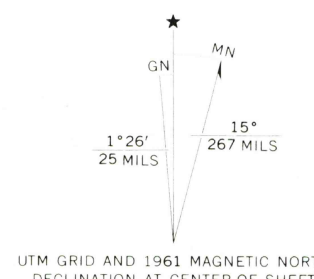


Mapped, edited, and published by the Geological Survey
as part of the Department of the Interior program
for the development of the Missouri River Basin

Control by USGS and USC&GS

Topography by photogrammetric methods from aerial
photographs taken 1957. Field checked 1961

Polyconic projection. 1927 North American datum
10,000 foot grid based on Wyoming coordinate system,
east central zone
1000-meter Universal Transverse Mercator grid ticks,
zone 13, shown in blue



ROAD CLASSIFICATION
Light-duty ——— Unimproved dirt ———

DIVIDE PEAK, WYO.
N4115-W10707.5/7.5

1961

THIS MAP COMPLIES WITH NATIONAL MAP ACCURACY STANDARDS
FOR SALE BY U. S. GEOLOGICAL SURVEY, DENVER, COLORADO 80225, OR RESTON, VIRGINIA 22092
A FOLDER DESCRIBING TOPOGRAPHIC MAPS AND SYMBOLS IS AVAILABLE ON REQUEST

RETURN TO:
USGS AND HISTORICAL MAP ARCHIVES

2700