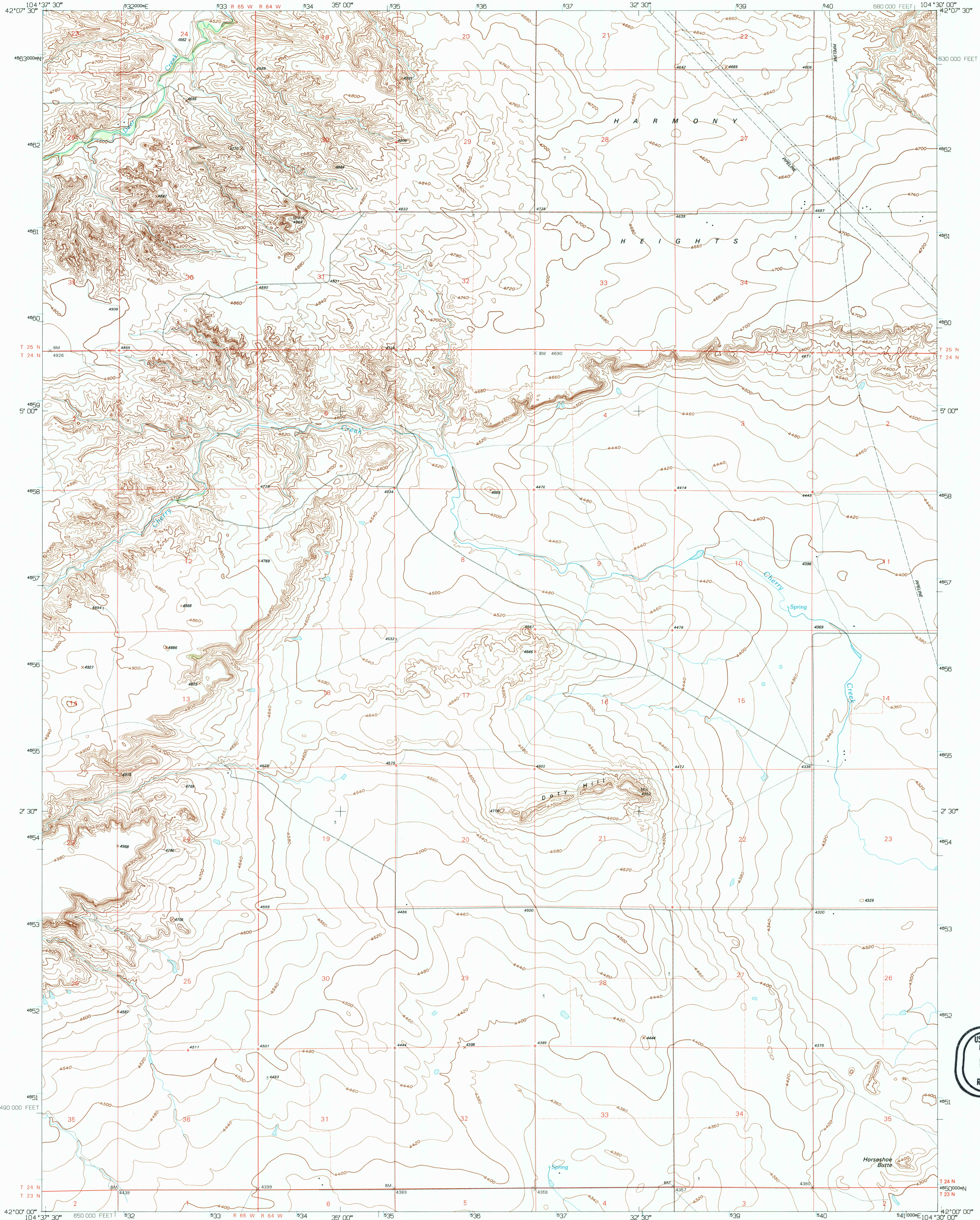


UNITED STATES  
DEPARTMENT OF THE INTERIOR  
GEOLOGICAL SURVEY

DOTY HILL QUADRANGLE  
WYOMING-GOSHEN CO.  
7.5-MINUTE SERIES (TOPOGRAPHIC)  
(FORMERLY ROCKEAGLE)



Produced by the United States Geological Survey

Control by USGS and NOS/NOAA

Compiled from imagery dated 1948. Revised from

imagery dated 1990. PLSS and survey control current as of 1950

Map edited 1995. Contours and land elevations have not been

revised and may conflict with other content

North American Datum of 1927 (NAD 27). Projection and

blue 1000-foot ticks: Universal Transverse Mercator, zone 13

10 000-foot ticks: Wyoming Coordinate System, east zone

North American Datum of 1983 (NAD 83) is shown by dashed

corner ticks. The values of the shift between NAD 27

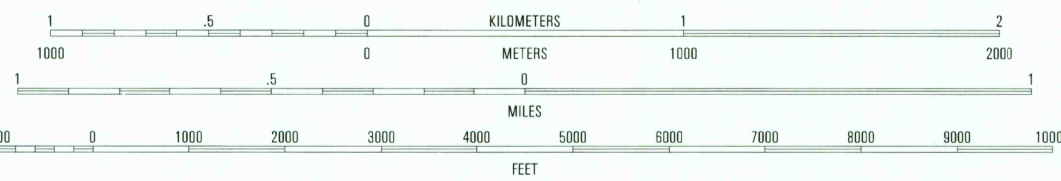
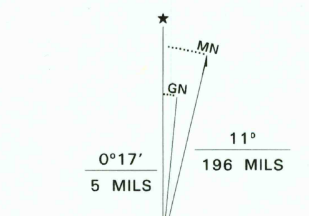
and NAD 83 for 7.5-minute intersections are obtainable from

National Geodetic Survey NADCON software

Fine red dashed lines indicate selected fence and field lines where

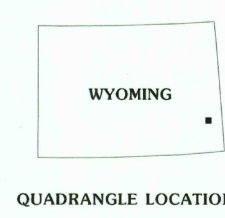
generally visible on aerial photographs. This information is unchecked

Certain land lines are omitted because of insufficient data



CONTOUR INTERVAL 20 FEET  
NATIONAL GEODETIC DATUM OF 1929  
TO CONVERT FEET TO METERS MULTIPLY BY 0.3048  
TO CONVERT METERS TO FEET MULTIPLY BY 3.2808

THIS MAP COMPLIES WITH NATIONAL MAP ACCURACY STANDARDS  
FOR SALE BY U.S. GEOLOGICAL SURVEY  
DENVER, COLORADO 80225, OR RESTON, VIRGINIA 22092  
A FOLDER DESCRIBING TOPOGRAPHIC MAPS AND SYMBOLS IS AVAILABLE ON REQUEST

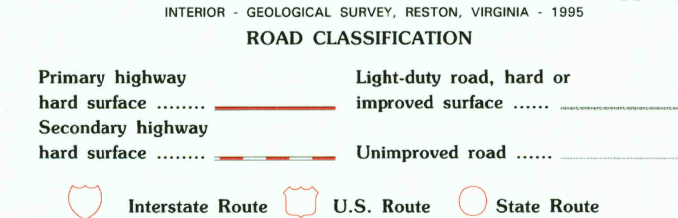


QUADRANGLE LOCATION

1	2	3
4	5	6
7	8	

1 Register Cliff  
2 Fort Laramie  
3 Barnes  
4 Eagles Nest  
5 Hahig Spring  
6 Dickinson Hill  
7 Glenville Reservoir  
8 Veteran

ADJOINING 7.5' QUADRANGLE NAMES



ROAD CLASSIFICATION

Primary highway  
hard surface .....  
Secondary highway  
hard surface .....  
Light-duty road, hard or  
improved surface .....  
Unimproved road .....  
Interstate Route  
U.S. Route  
State Route

DOTY HILL, WY  
(FORMERLY ROCKEAGLE)  
42104-A5-TF-024  
1990  
DMA 5068 II SE-SERIES V894

