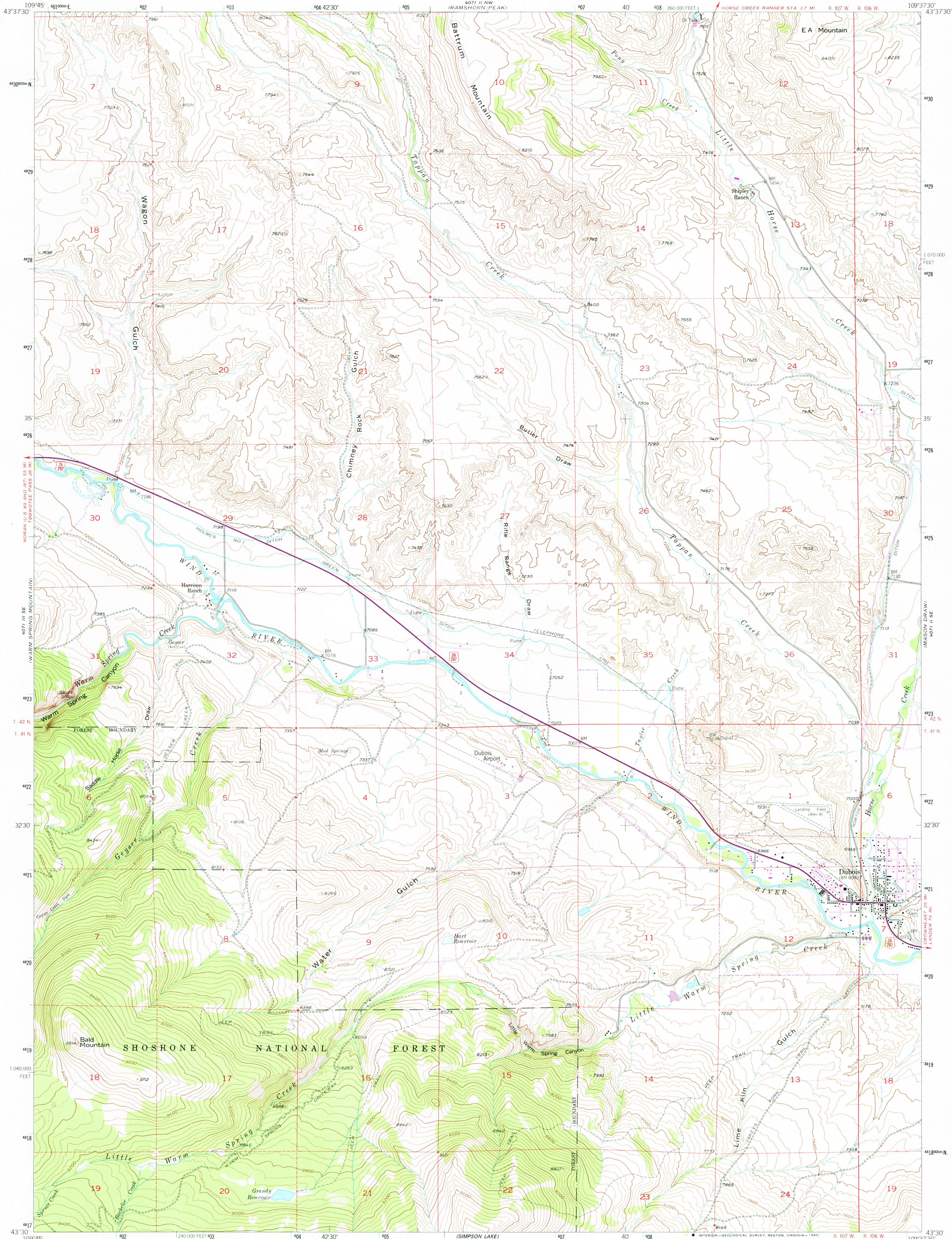


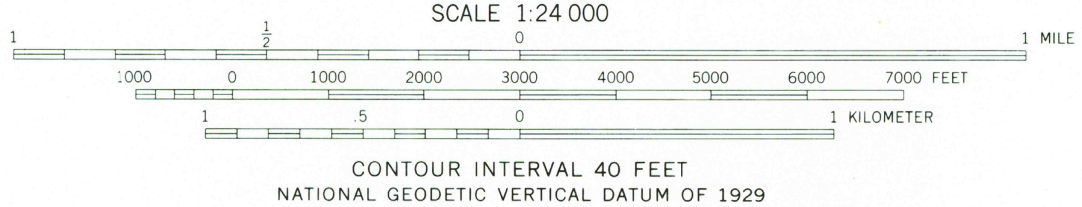
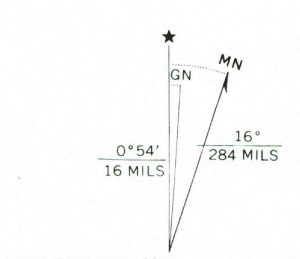
UNITED STATES
DEPARTMENT OF THE INTERIOR
GEOLOGICAL SURVEY



DUBOIS QUADRANGLE
WYOMING—FREMONT CO.
7.5 MINUTE SERIES (TOPOGRAPHIC)



Mapped, edited, and published by the Geological Survey as part of the Department of the Interior program for the development of the Missouri River Basin. Control by USGS and NOS/NOAA. Topography from aerial photographs by photogrammetric methods. Aerial photographs taken 1953. Field check 1956. Polyconic projection. 1927 North American datum. 10,000-foot grid based on Wyoming coordinate system, west central zone. 1000-meter Universal Transverse Mercator grid ticks, zone 12, shown in blue. There may be private inholdings within the boundaries of the National or State reservations shown on this map.



THIS MAP COMPLIES WITH NATIONAL MAP ACCURACY STANDARDS
FOR SALE BY U. S. GEOLOGICAL SURVEY, DENVER, COLORADO 80225, OR RESTON, VIRGINIA 22092
A FOLDER DESCRIBING TOPOGRAPHIC MAPS AND SYMBOLS IS AVAILABLE ON REQUEST

ROAD CLASSIFICATION

| | |
|---------------------------------|---|
| Primary highway, hard surface | Light-duty road, hard or improved surface |
| Secondary highway, hard surface | Unimproved road |
| Interstate Route | U. S. Route |
| State Route | |

USGS Historical File Topographic Division

DUBOIS, WYO.
N4330-W10937.5/7.5
1956
PHOTOREVISED 1979
DMA 4071 II SW-SERIES 1984

MAY - 1 1990

1668

RETURN TO:
USGS AND HISTORICAL MAP ARCHIVES