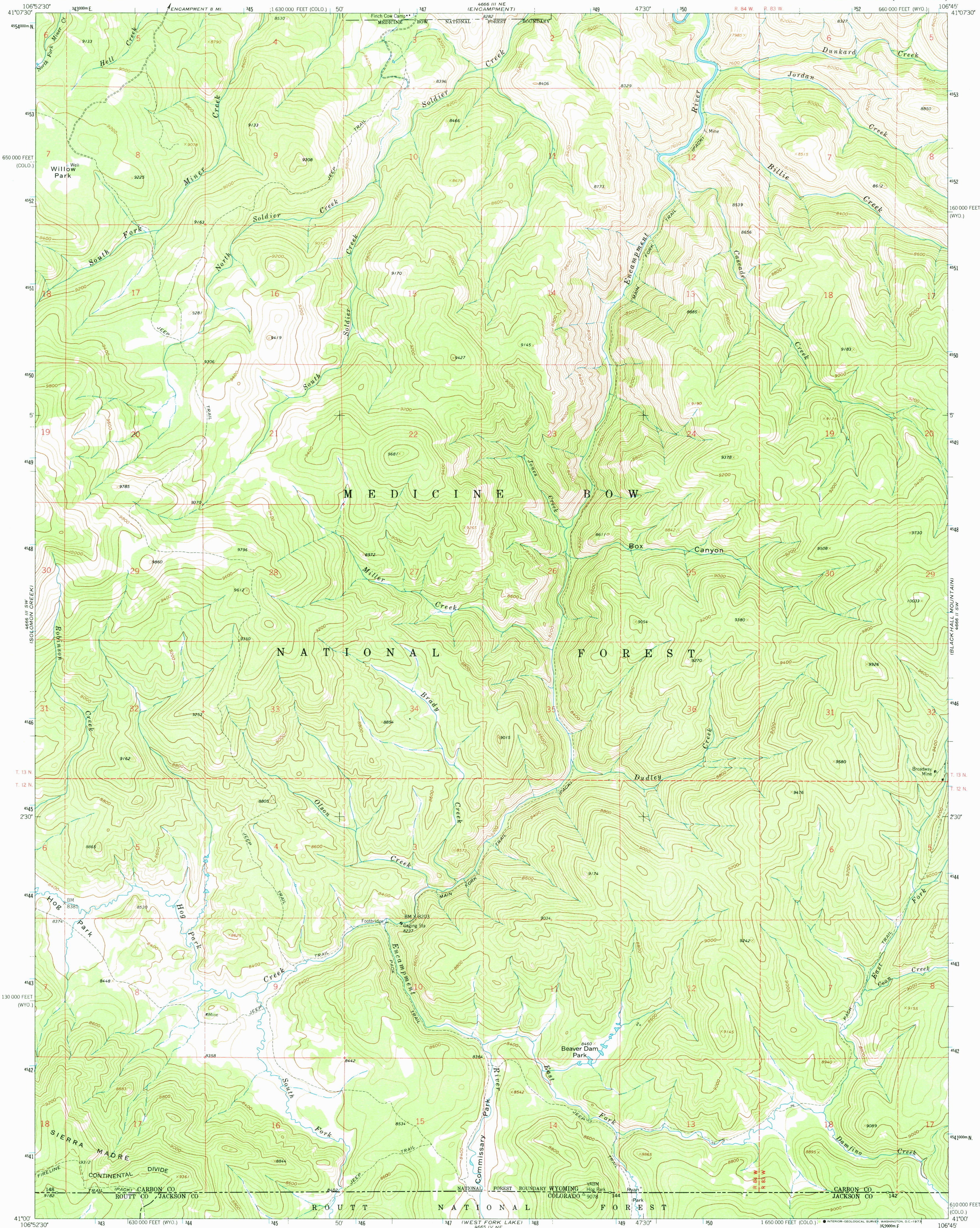
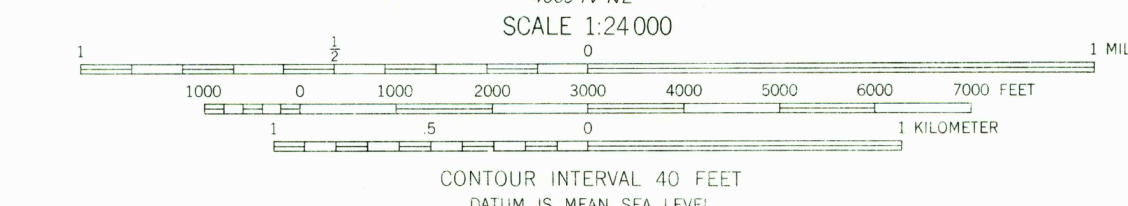
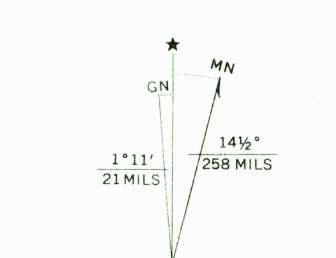


UNITED STATES
DEPARTMENT OF THE INTERIOR
GEOLOGICAL SURVEY

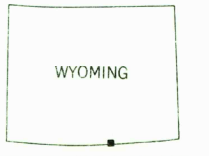
DUDLEY CREEK QUADRANGLE
WYOMING-COLORADO
7.5 MINUTE SERIES (TOPOGRAPHIC)



Maped, edited, and published by the Geological Survey
as part of the Department of the Interior program
for the development of the Missouri River Basin
Control by USGS and USC&GS
Topography by photogrammetric methods from aerial
photographs taken 1953 and 1958. Field checked 1961
Polyconic projection. 1927 North American datum.
10,000-foot grids based on Wyoming coordinate system, east central zone
and Colorado coordinate system, north zone
1000-meter Universal Transverse Mercator grid ticks,
zone 13, shown in blue
Where omitted, land lines have not been established or are
not shown because of insufficient data



THIS MAP COMPLIES WITH NATIONAL MAP ACCURACY STANDARDS
FOR SALE BY U. S. GEOLOGICAL SURVEY, DENVER, COLORADO 80225, OR WASHINGTON, D. C. 20242
A FOLDER DESCRIBING TOPOGRAPHIC MAPS AND SYMBOLS IS AVAILABLE ON REQUEST



ROAD CLASSIFICATION
Unimproved dirt -----

DUDLEY CREEK, WYO.-COLO.
N4100-W10645/7.5

1961
AMS 4666 III SE-SERIES Y874

MAY 4 1973

RETURN TO:
USGS HISTORICAL MAP ARCHIVE