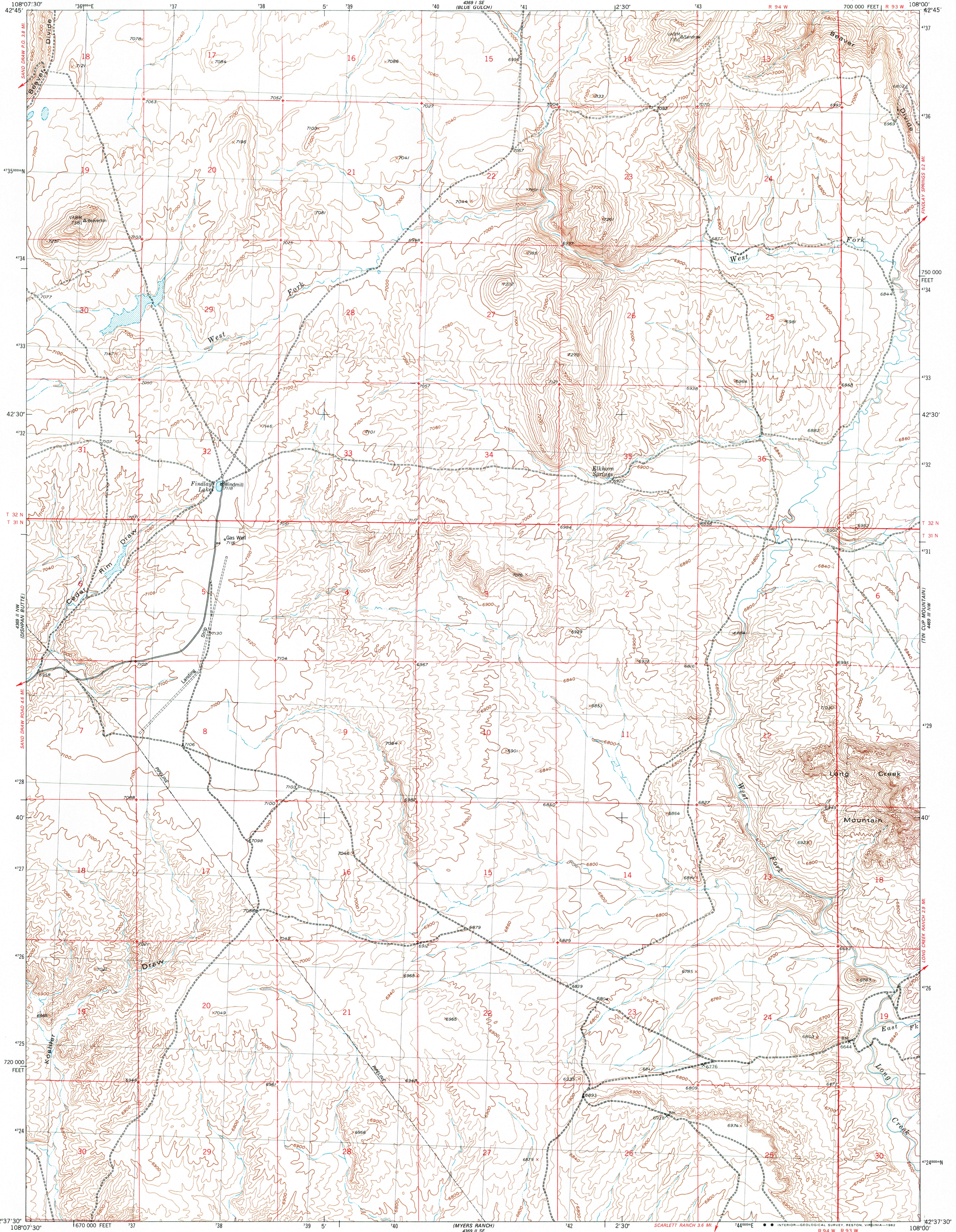
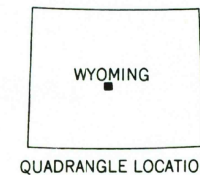
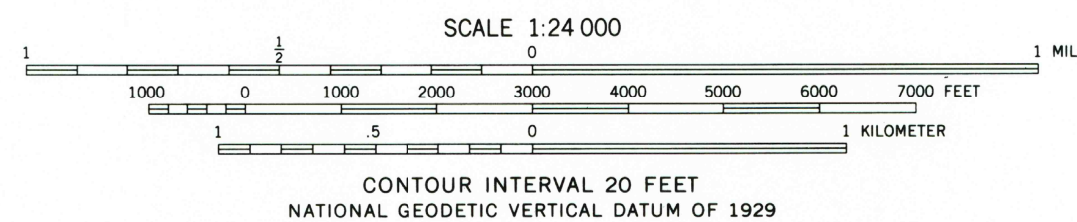
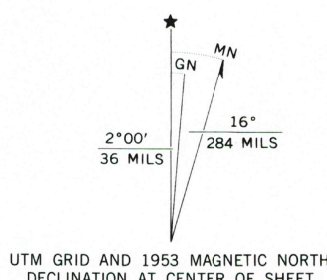


UNITED STATES  
DEPARTMENT OF THE INTERIOR  
GEOLOGICAL SURVEY

ELKHORN SPRINGS QUADRANGLE  
WYOMING-FREMONT CO.  
7.5 MINUTE SERIES (TOPOGRAPHIC)



Mapped, edited, and published by the Geological Survey as part of the Department of the Interior program for the development of the Missouri River Basin Control by USGS and USC&GS Topography from aerial photographs by multiplex methods Aerial photographs taken 1949. Field checked 1953 Polyconic projection. 1927 North American datum 10,000-foot grid based on Wyoming coordinate system, west central zone 1000-meter Universal Transverse Mercator grid, zone 12, shown in black Dashed land lines indicate approximate locations Certain land lines are omitted in T. 32 N. - R. 93 W. because of insufficient data.



| ROAD CLASSIFICATION             |   |
|---------------------------------|---|
| Primary highway, hard surface   | Light duty road, hard or improved surface |
| Secondary highway, hard surface | Unimproved road                           |
| Interstate Route                | U. S. Route                               |
|                                 | State Route                               |

THIS MAP COMPLIES WITH NATIONAL MAP ACCURACY STANDARDS FOR SALE BY U. S. GEOLOGICAL SURVEY, DENVER, COLORADO 80225, OR RESTON, VIRGINIA 22092 A FOLDER DESCRIBING TOPOGRAPHIC MAPS AND SYMBOLS IS AVAILABLE ON REQUEST

To place on the predicted North American Datum 1983 move the projection lines 9 meters north and 54 meters east as shown by dashed corner ticks

ELKHORN SPRINGS, WYO.  
N4237.5-W10800/7.5  
1953  
DMA 4369 II NE-SERIES V874

RETURN TO:  
USGS AND HISTORICAL MAP ARCHIVES

JAN 28 1983

1250