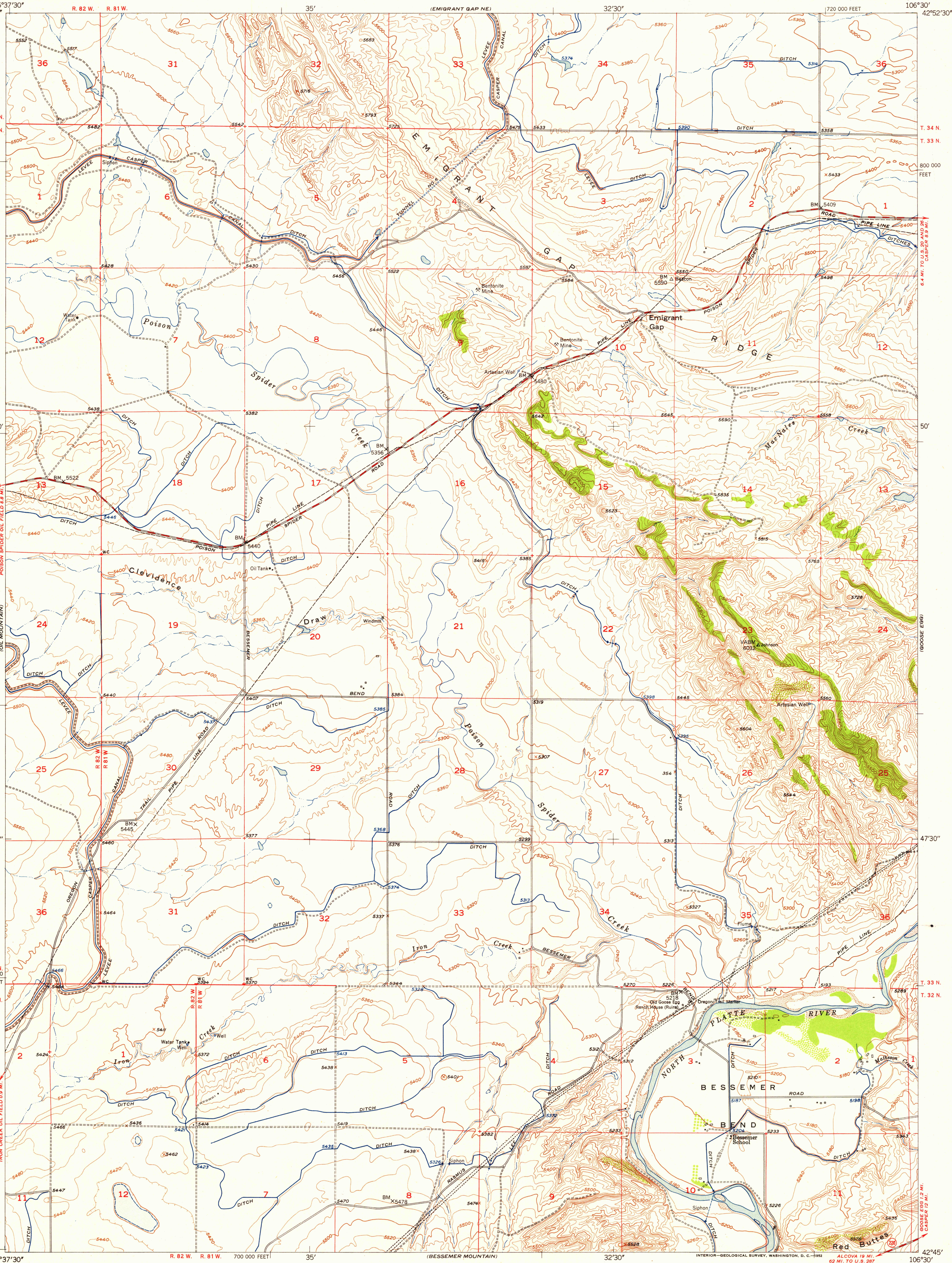
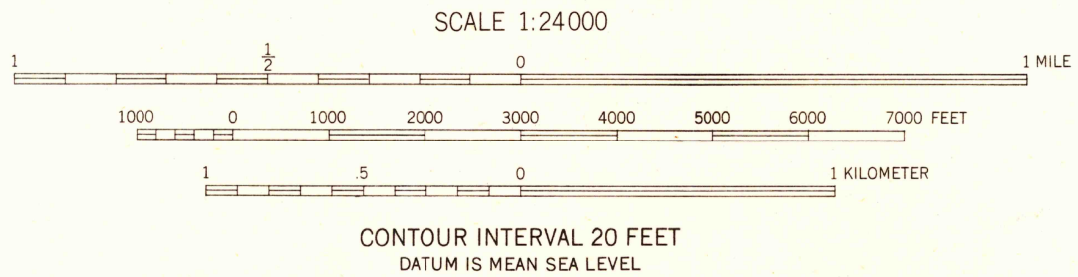


UNITED STATES
DEPARTMENT OF THE INTERIOR
GEOLOGICAL SURVEY

EMIGRANT GAP QUADRANGLE
WYOMING-NATRONA CO.
7.5 MINUTE SERIES (TOPOGRAPHIC)



Maped, edited, and published by the Geological Survey as part of the Department of the Interior program for the development of the Missouri River Basin.
Control by USGS and USC&GS
Topography from aerial photographs by multiplex methods and plane-table surveys 1950
Aerial photographs taken 1947
Polyconic projection. 1927 North American datum
10,000-foot grid based on Wyoming coordinate system, east central zone



ROAD CLASSIFICATION
Heavy-duty 4 LANE-6 LANE Light-duty
Medium-duty 2 LANE-4 LANE Unimproved dirt
U.S. Route State Route

EMIGRANT GAP, WYO.
N4245-W10630/7.5

1950

RETURN TO:
USGS AND HISTORICAL MAP ARCHIVES