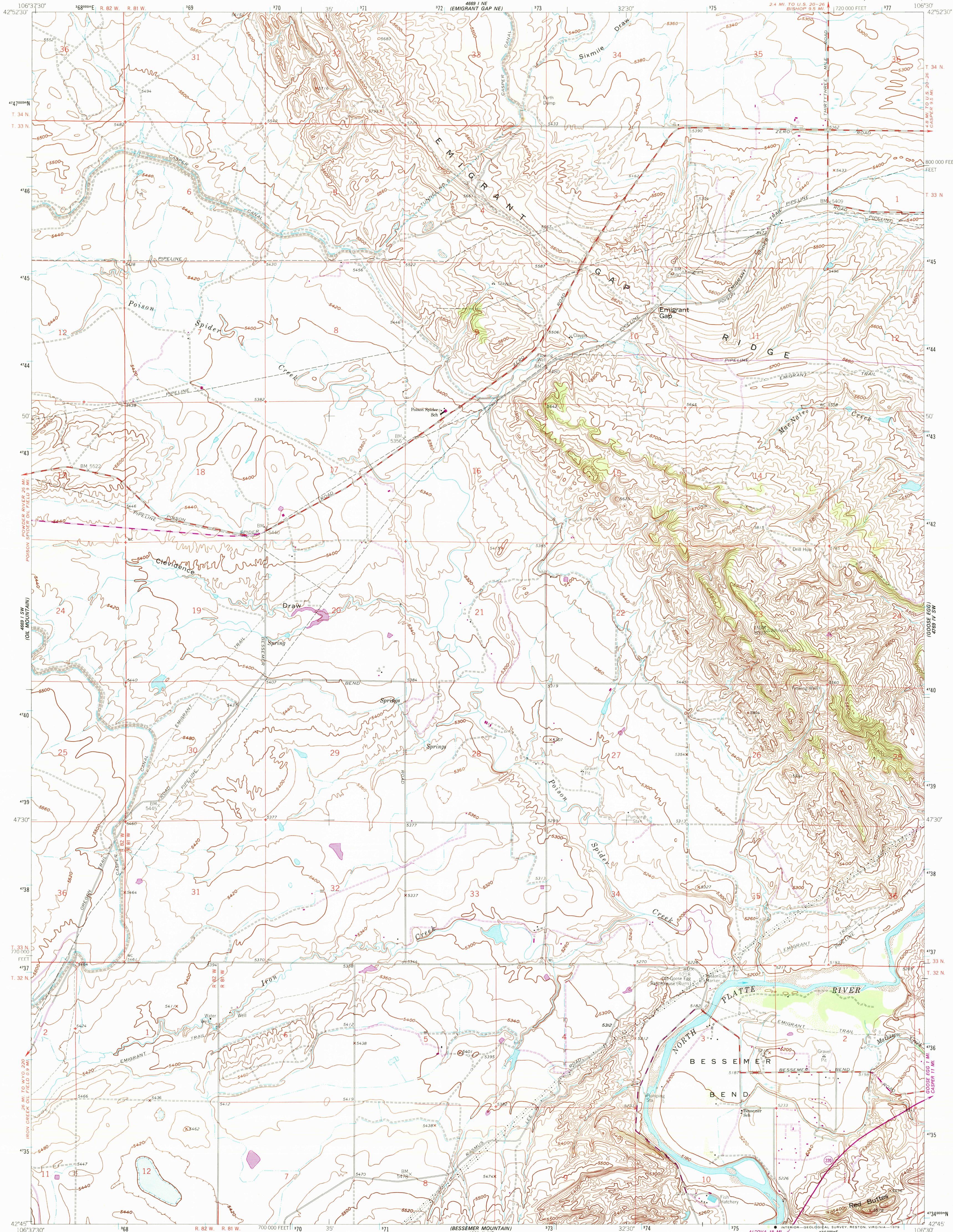


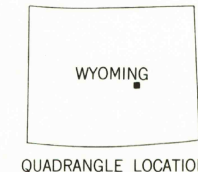
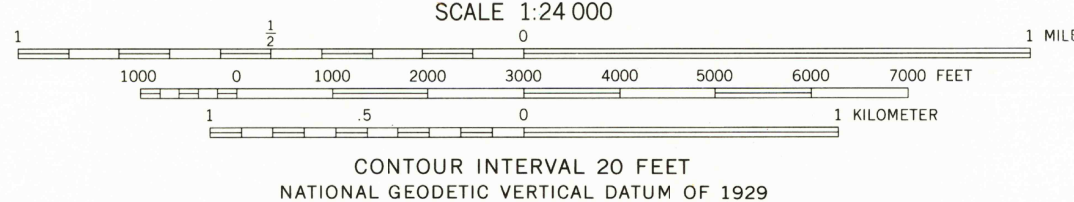
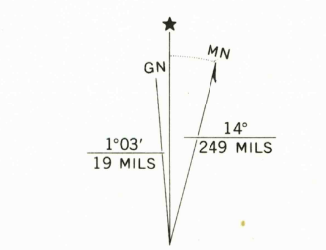
UNITED STATES
DEPARTMENT OF THE INTERIOR
GEOLOGICAL SURVEY

EMIGRANT GAP QUADRANGLE
WYOMING-NATRONA CO.
7.5 MINUTE SERIES (TOPOGRAPHIC)



Mapped, edited, and published by the Geological Survey
Control by USGS and NOS/NOAA
Topography by photogrammetric methods from aerial photographs
taken 1947 and planetable surveys 1950. Revised 1960
Polyconic projection. 1927 North American datum
10,000-foot grid based on Wyoming coordinate system,
east central zone
1000-meter Universal Transverse Mercator grid ticks,
zone 13, shown in blue

Revisions shown in purple compiled from aerial photographs taken
1976. Mapped edited 1978. This information not field checked



ROAD CLASSIFICATION	
Primary highway, hard surface	Light duty road, hard or improved surface
Secondary highway, hard surface	Unimproved road
Interstate Route	U. S. Route
	State Route

EMIGRANT GAP, WYO.
N4245-W10630/7.5

1960
PHOTOREVISED 1978
DMA 4669 I SE-SERIES V874

THIS MAP COMPLIES WITH NATIONAL MAP ACCURACY STANDARDS
FOR SALE BY U. S. GEOLOGICAL SURVEY, DENVER, COLORADO 80225, OR RESTON, VIRGINIA 22092
A FOLDER DESCRIBING TOPOGRAPHIC MAPS AND SYMBOLS IS AVAILABLE ON REQUEST