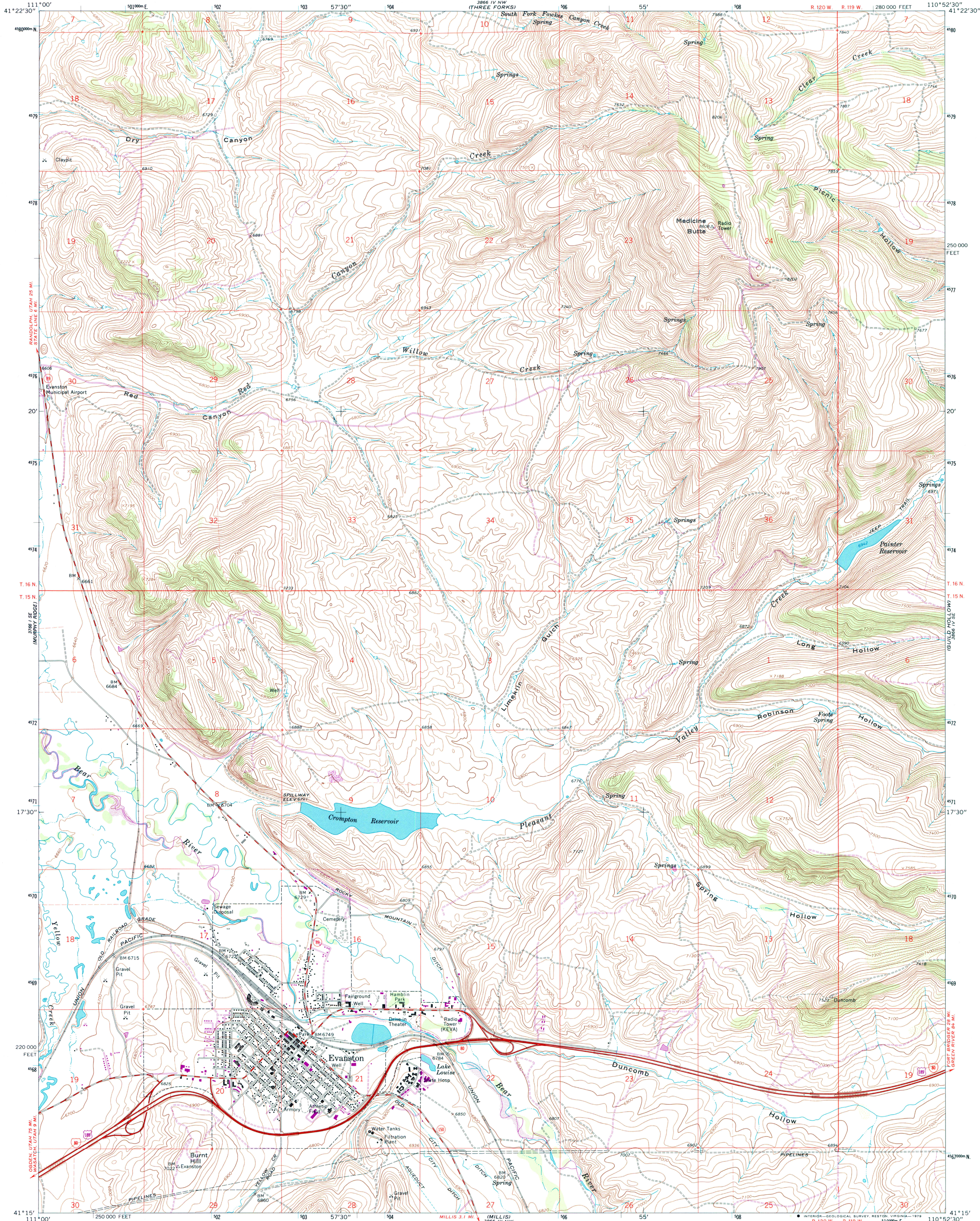


UNITED STATES
DEPARTMENT OF THE INTERIOR
GEOLOGICAL SURVEY

EVANSTON QUADRANGLE
WYOMING—UINTA CO.
7.5 MINUTE SERIES (TOPOGRAPHIC)



Mapped, edited, and published by the Geological Survey

Control by USGS and NOS/NOAA

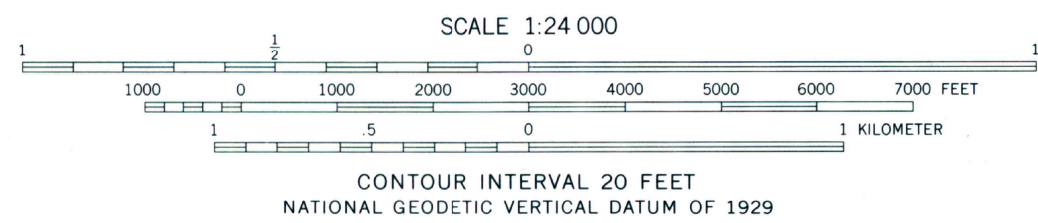
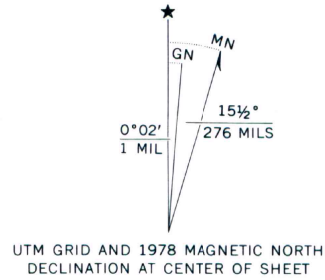
Topography by photogrammetric methods from aerial photographs taken 1964. Field checked 1965

Polyconic projection. 1927 North American datum 10,000-foot grid based on Wyoming coordinate system, west zone

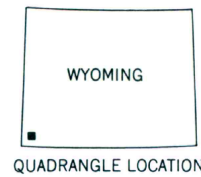
1000-meter Universal Transverse Mercator grid ticks, zone 12, shown in blue

Fine red dashed lines indicate selected fence lines

Revisions shown in purple compiled from aerial photographs taken 1976 and other source data. This information not field checked. Map edited 1978



THIS MAP COMPLIES WITH NATIONAL MAP ACCURACY STANDARDS
FOR SALE BY U. S. GEOLOGICAL SURVEY, DENVER, COLORADO 80225, OR RESTON, VIRGINIA 22092
A FOLDER DESCRIBING TOPOGRAPHIC MAPS AND SYMBOLS IS AVAILABLE ON REQUEST



ROAD CLASSIFICATION	
Heavy-duty	Light-duty
Medium-duty	Unimproved dirt
Interstate Route	U. S. Route
	State Route

EVANSTON, WYO.
N4115—W11052.5/7.5

1965
PHOTOREVISED 1978
DMA 3866 IV SW—SERIES V874