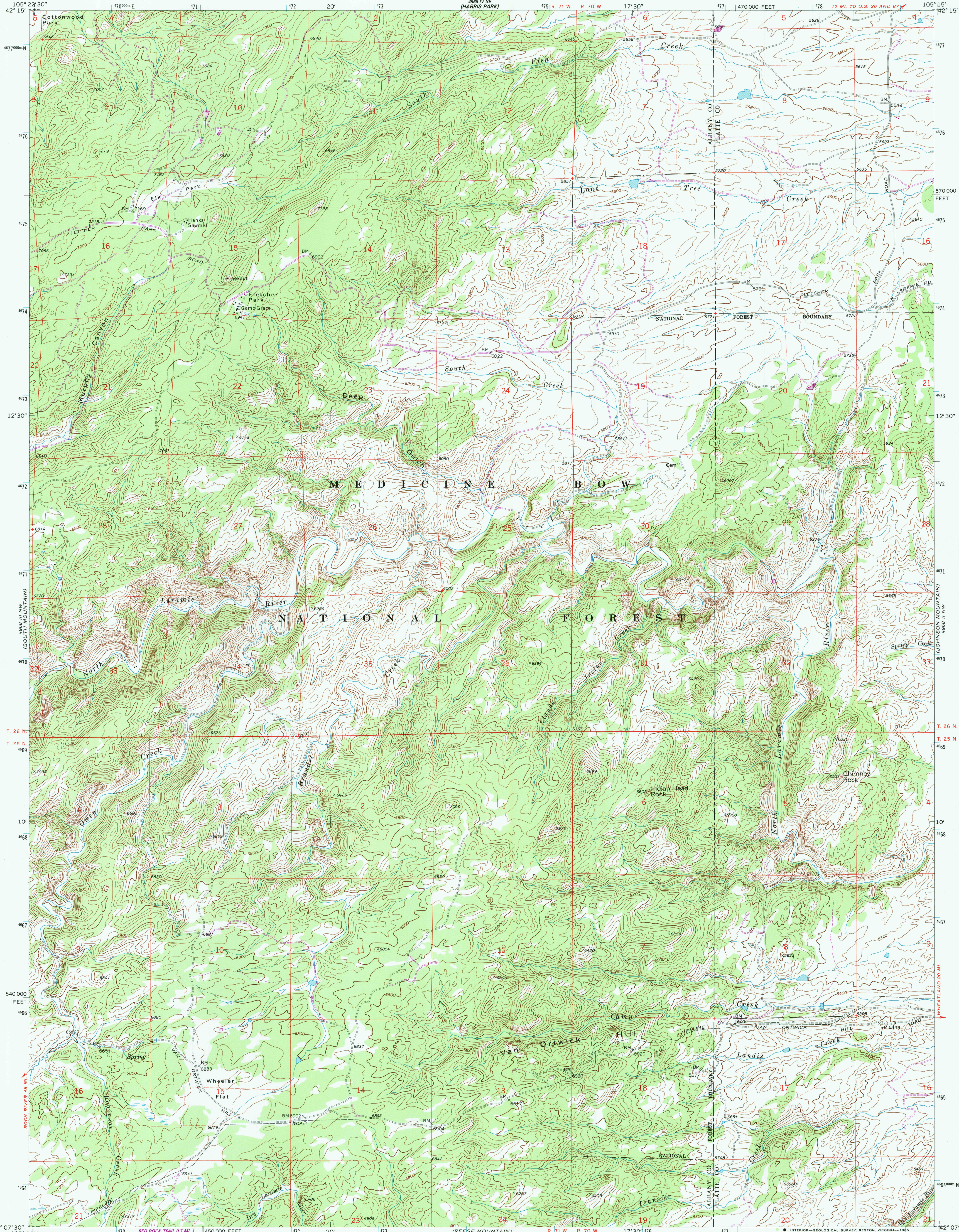


UNITED STATES
DEPARTMENT OF THE INTERIOR
GEOLOGICAL SURVEY

FLETCHER PARK QUADRANGLE
WYOMING
7.5 MINUTE SERIES (TOPOGRAPHIC)

4968 III SW
(COTTONWOOD
FALLS)



Mapped, edited, and published by the Geological Survey
Control by USGS and NOS/NOAA

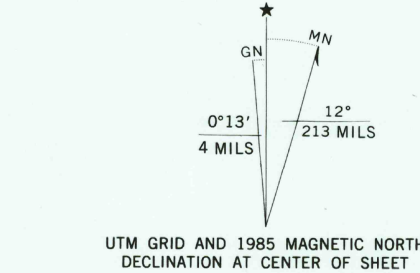
Topography by photogrammetric methods from aerial
photographs taken 1967. Field checked 1968

Polyconic projection. 1927 North American Datum
10,000-foot grid based on Wyoming coordinate system
east zone

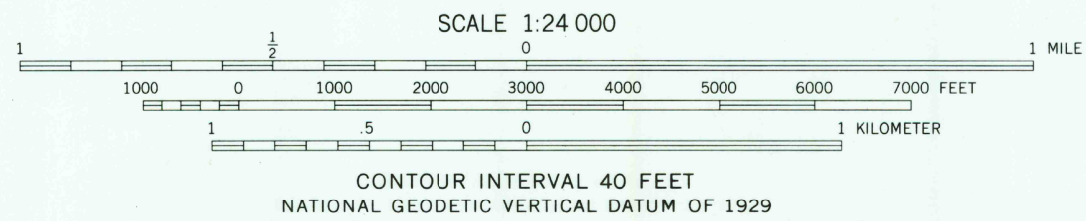
1000-meter Universal Transverse Mercator grid ticks,
zone 13, shown in blue

Fine red dashed lines indicate selected fence lines
To place on the predicted North American Datum 1983
move the projection lines 7 meters north and
47 meters east as shown by dashed corner ticks

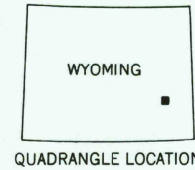
There may be private inholdings within the boundaries
of the National or State reservations shown on this map



Revisions shown in purple and woodland
compiled from aerial photographs taken 1981
and other source data. Partial field check
by U. S. Forest Service. Map edited 1985



THIS MAP COMPLIES WITH NATIONAL MAP ACCURACY STANDARDS
FOR SALE BY U. S. GEOLOGICAL SURVEY, DENVER, COLORADO 80225, OR RESTON, VIRGINIA 22092
A FOLDER DESCRIBING TOPOGRAPHIC MAPS AND SYMBOLS IS AVAILABLE ON REQUEST



ROAD CLASSIFICATION
Light-duty road, all weather, Unimproved road, fair or dry
Improved surface weather

FLETCHER PARK, WYO.
42105-B3-TF-024

1968
PHOTOREVISED 1985
DMA 4968 III NE-SERIES V874

NOV 25 1985
REFERENCE COLLECTION