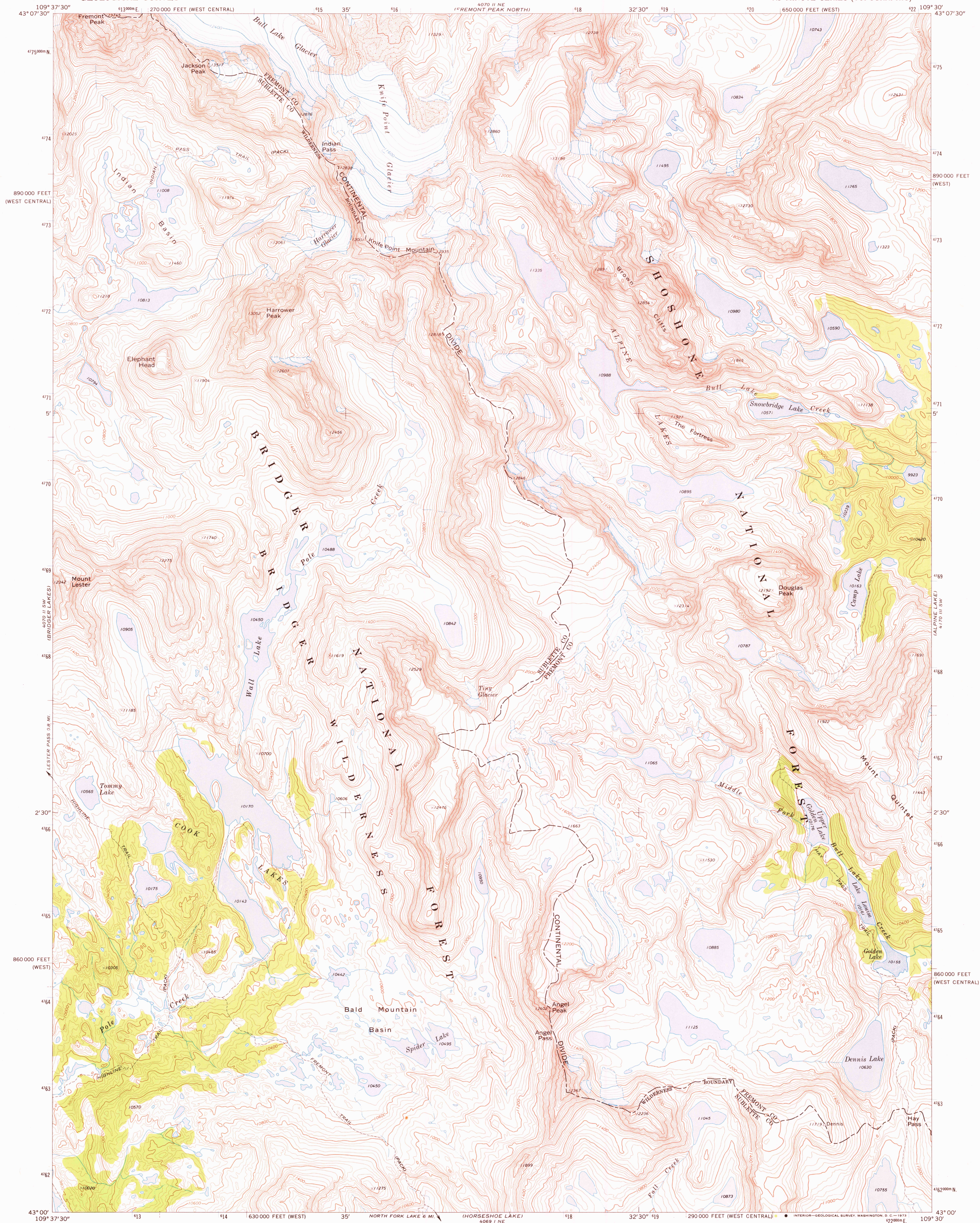


UNITED STATES
DEPARTMENT OF THE INTERIOR
GEOLOGICAL SURVEY

FREMONT PEAK SOUTH QUADRANGLE
WYOMING
7.5 MINUTE SERIES (TOPOGRAPHIC)



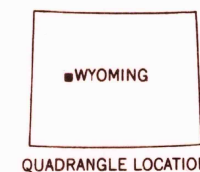
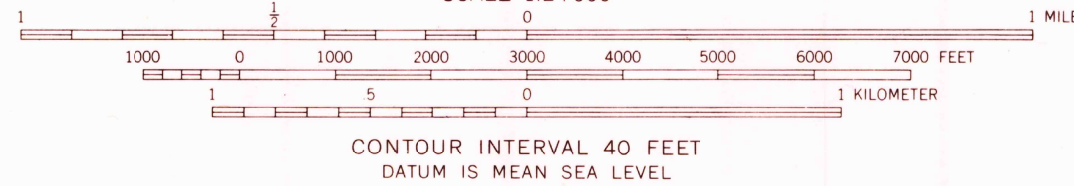
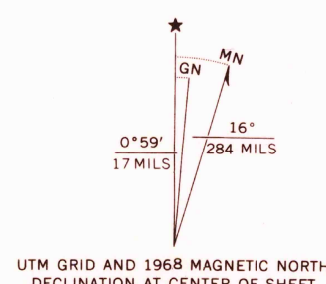
Mapped, edited, and published by the Geological Survey

Control by USGS and USC&GS

Topography by photogrammetric methods from aerial photographs taken 1966. Field checked 1968

Polyconic projection. 1927 North American datum 10,000-foot grids based on Wyoming coordinate system, west and west central zones 1000-meter Universal Transverse Mercator grid ticks, zone 12, shown in blue

Land lines have not been established in this area



ROAD CLASSIFICATION
Trails

FREMONT PEAK SOUTH, WYO.
N4300-W10930/7.5

1968

AMS 4070 II SE—SERIES V874

THIS MAP COMPLIES WITH NATIONAL MAP ACCURACY STANDARDS
FOR SALE BY U.S. GEOLOGICAL SURVEY, DENVER, COLORADO 80225, OR WASHINGTON, D.C. 20242
A FOLDER DESCRIBING TOPOGRAPHIC MAPS AND SYMBOLS IS AVAILABLE ON REQUEST

RETURN TO:
USGS AND HISTORICAL MAP ARCHIVES

FEB 26 1973

USGS
Historical File
Topographic Division

4650