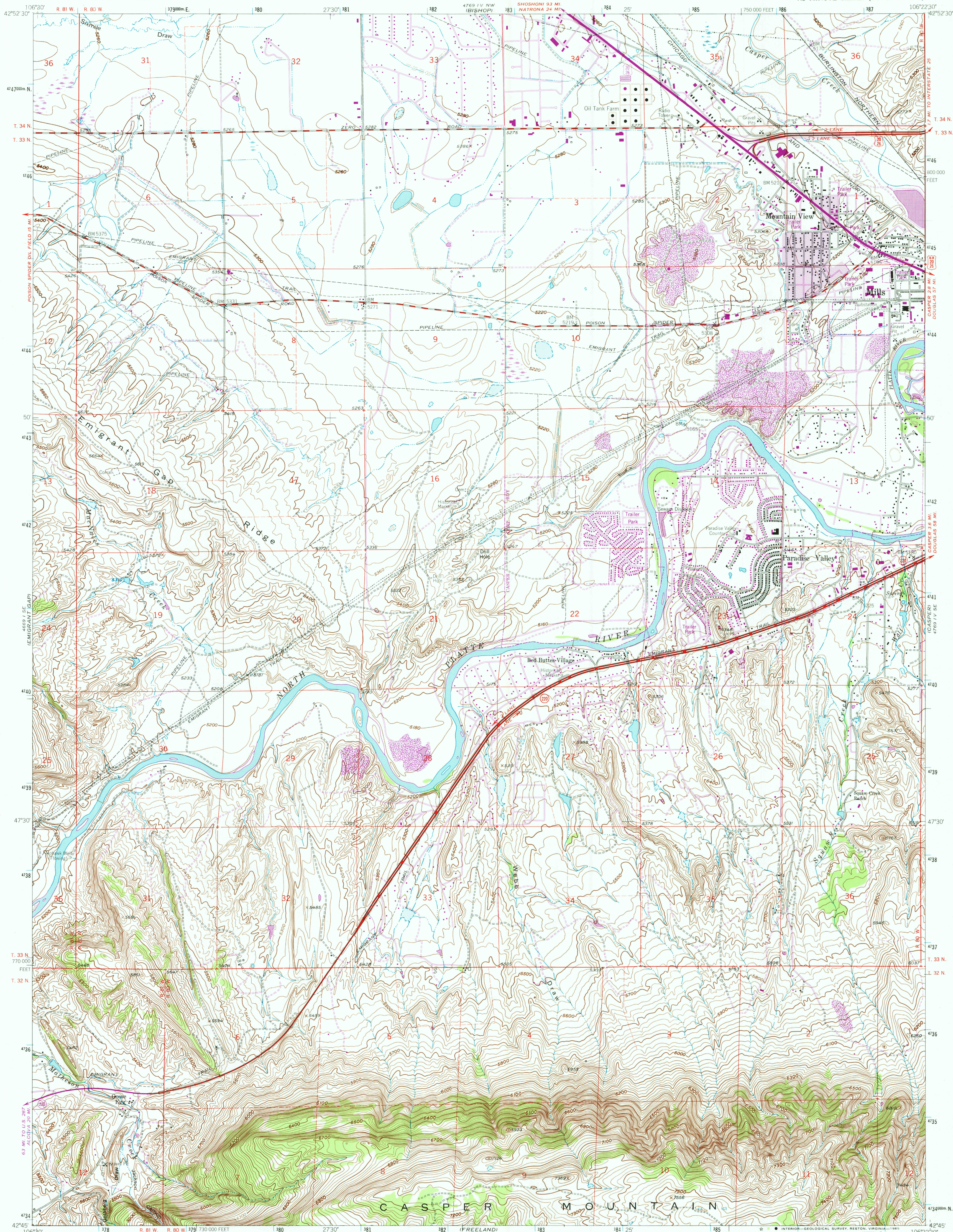


UNITED STATES
DEPARTMENT OF THE INTERIOR
GEOLOGICAL SURVEY

GOOSE EGG QUADRANGLE
WYOMING-NATRONA CO.
7.5 MINUTE SERIES (TOPOGRAPHIC)



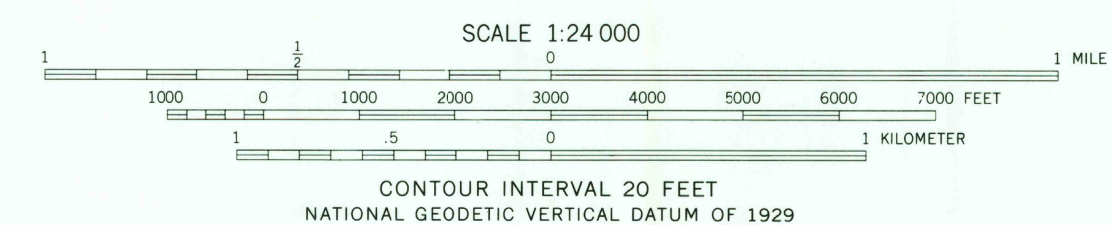
Mapped, edited, and published by the Geological Survey as part of the Department of the Interior program for the development of the Missouri River Basin. Control by USGS and NOS/NOAA.

Topography by photogrammetric methods from aerial photographs taken 1947 and planetable surveys 1929 and 1950. Revised from aerial photographs taken 1950. Field checked 1961.

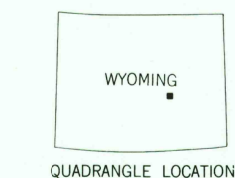
Polyconic projection. 1927 North American Datum. 10,000-foot grid based on Wyoming coordinate system, east central zone 1000-meter Universal Transverse Mercator grid ticks, zone 13, shown in blue.

Fine red dashed lines indicate selected fence and field lines where generally visible on aerial photographs. This information is unchecked. Dashed land lines indicate approximate locations.

UTM GRID AND 1984 MAGNETIC NORTH DECLINATION AT CENTER OF SHEET. To place on the predicted North American Datum 1983 move the projection lines 8 meters north and 50 meters east as shown by dashed corner ticks.



ROAD CLASSIFICATION
Heavy-duty ——— Light-duty ———
Medium-duty ——— Unimproved dirt ———
U.S. Route ——— State Route ———



GOOSE EGG, WYO.
42106-G4-TF-024

1961
PHOTOREVISED 1984
DMA 4769 IV SW-SERIES Y874

Revisions shown in purple and woodland compiled from aerial photographs taken 1980 and other source data. This information not field checked. Map edited 1984. Purple tint indicates extension of urban areas.

