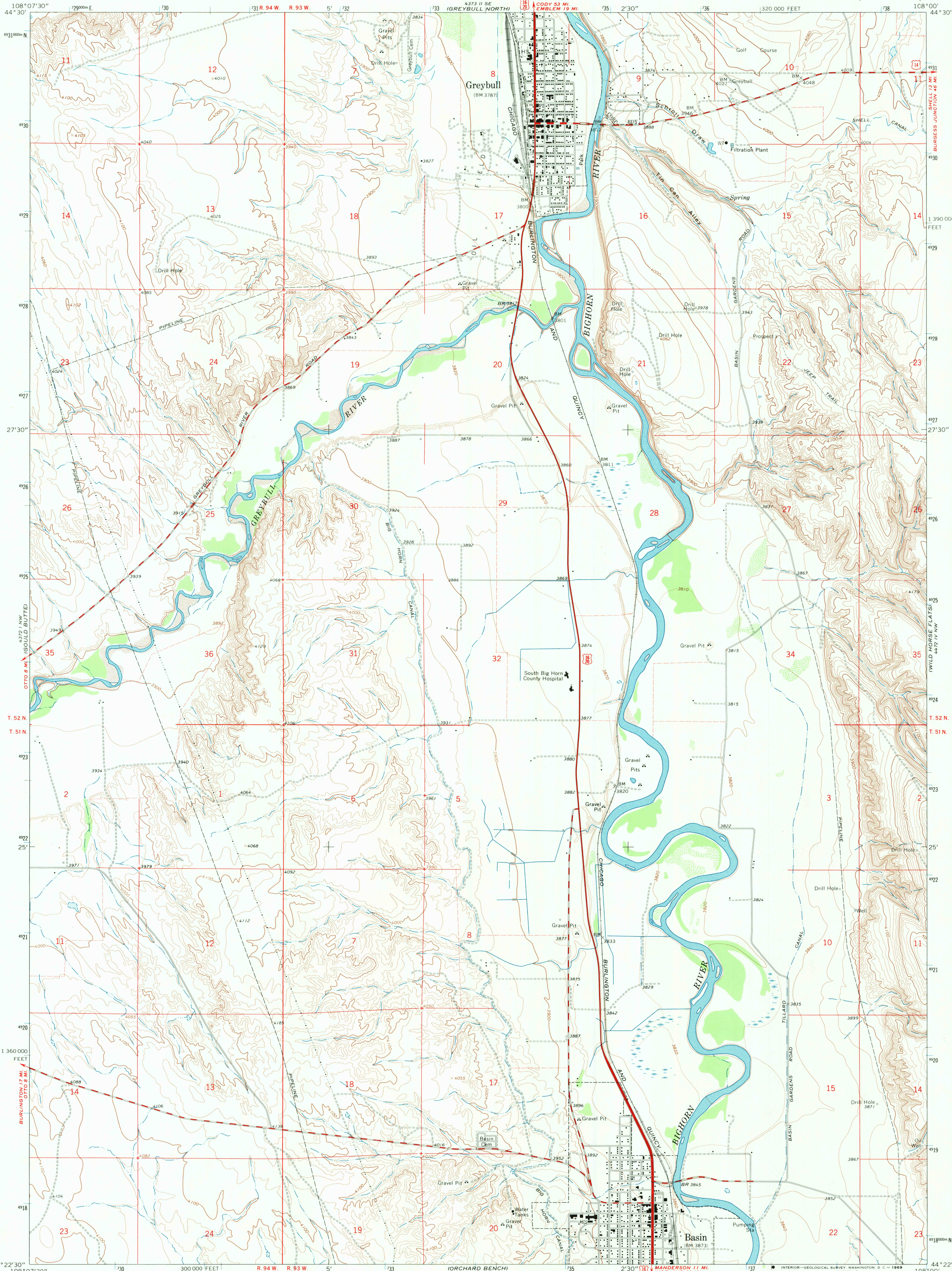
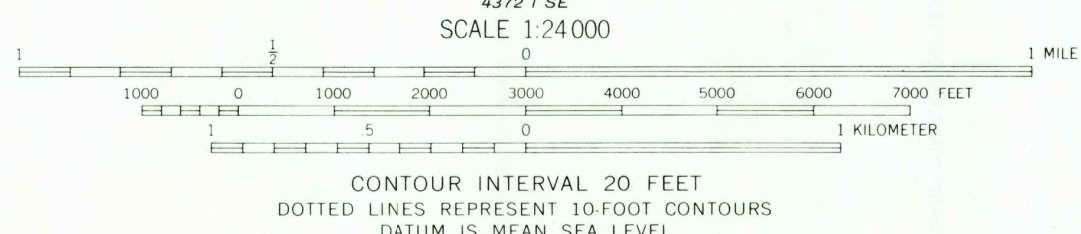


UNITED STATES
DEPARTMENT OF THE INTERIOR
GEOLOGICAL SURVEY

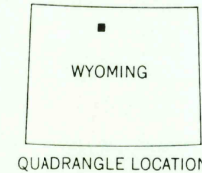
GREYBULL SOUTH QUADRANGLE
WYOMING—BIG HORN CO.
7.5 MINUTE SERIES (TOPOGRAPHIC)



Mapped, edited, and published by the Geological Survey
Control by USGS and USC&GS
Topography by photogrammetric methods from aerial
photographs taken 1964. Field checked 1966
Polyconic projection. 1927 North American datum
10,000-foot grid based on Wyoming coordinate system,
east central zone
1000-meter Universal Transverse Mercator grid ticks,
zone 12, shown in blue
Fine red dashed lines indicate selected fence lines
Land lines are omitted in areas of extensive tract surveys



ROAD CLASSIFICATION
Heavy-duty ——— Light-duty ———
Medium-duty ——— Unimproved dirt ———
U.S. Route



GREYBULL SOUTH, WYO.
N4422 5—W10800/7.5

U.S.G.S.
FILE COPY
TOPOGRAPHIC DIVISION

THIS MAP COMPLIES WITH NATIONAL MAP ACCURACY STANDARDS
FOR SALE BY U.S. GEOLOGICAL SURVEY, DENVER, COLORADO 80225, OR WASHINGTON, D. C. 20242
A FOLDER DESCRIBING TOPOGRAPHIC MAPS AND SYMBOLS IS AVAILABLE ON REQUEST

1966
AMS 4372 1 NE—SERIES V874

RETURN TO:
USGS AND HISTORICAL MAP ARCHIVES

3005
NOV 4 1969