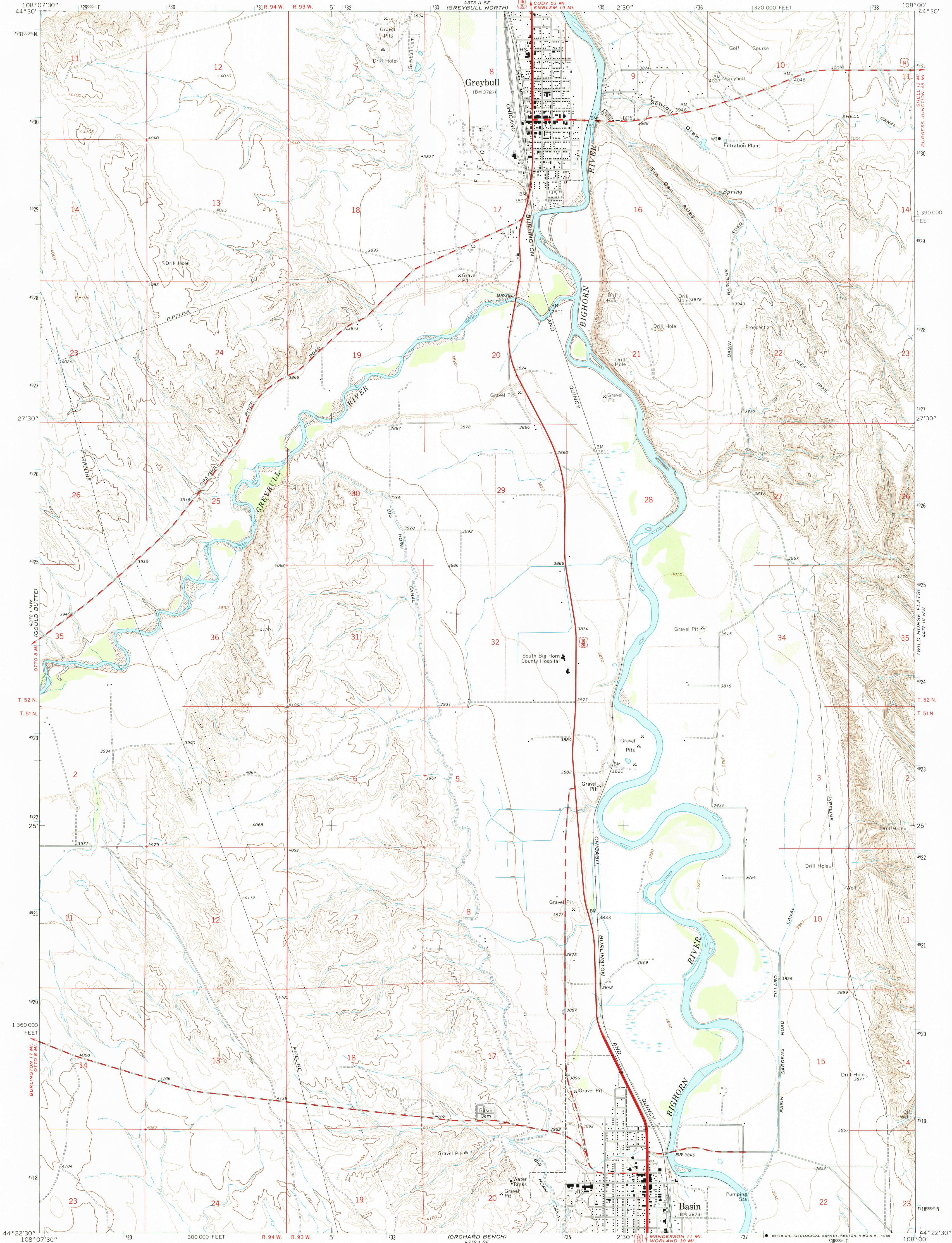


UNITED STATES
DEPARTMENT OF THE INTERIOR
GEOLOGICAL SURVEY

GREYBULL SOUTH QUADRANGLE
WYOMING-BIG HORN CO.
7.5 MINUTE SERIES (TOPOGRAPHIC)



Mapped, edited, and published by the Geological Survey
Control by USGS and USC&GS
Topography by photogrammetric methods from aerial photographs taken 1964. Field checked 1966
Polyconic projection. 1927 North American Datum
10,000-foot grid based on Wyoming coordinate system, east central zone
1000-meter Universal Transverse Mercator grid ticks, zone 12, shown in blue
Fine red dashed lines indicate selected fence lines
Land lines are omitted in areas of extensive tract surveys
To place on the predicted North American Datum 1983 move the projection lines 8 meters north and 52 meters east as shown by dashed corner ticks

Map photoinspected 1978
No major culture or drainage changes observed

THIS MAP COMPLIES WITH NATIONAL MAP ACCURACY STANDARDS
FOR SALE BY U. S. GEOLOGICAL SURVEY, DENVER, COLORADO 80225, OR RESTON, VIRGINIA 22092
A FOLDER DESCRIBING TOPOGRAPHIC MAPS AND SYMBOLS IS AVAILABLE ON REQUEST

GREYBULL SOUTH, WYO.
44108-D1-TF-024

1966
PHOTOINSPECTED 1978
DMA 4372 1 NE-SERIES V874