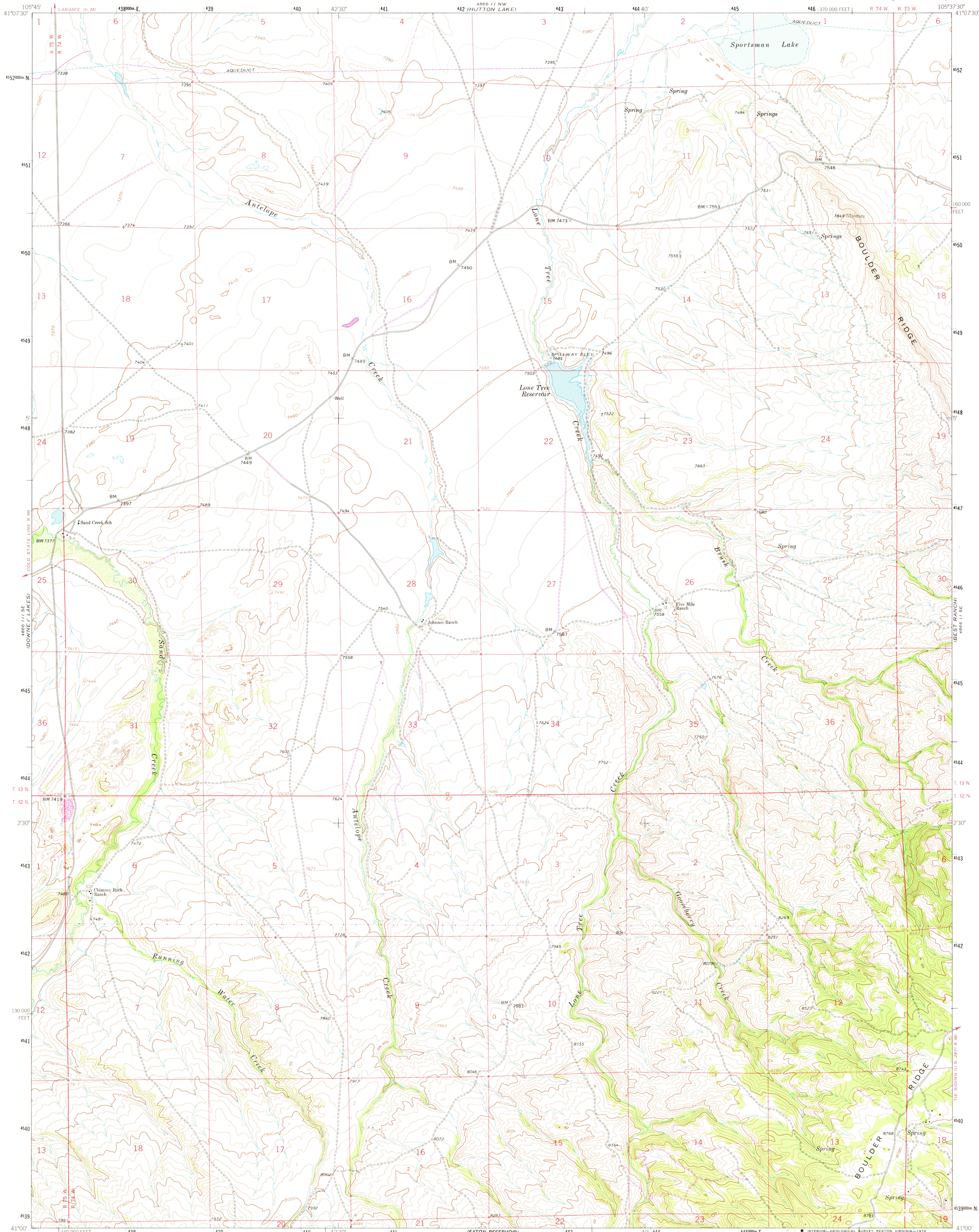


UNITED STATES
DEPARTMENT OF THE INTERIOR
GEOLOGICAL SURVEY

JOHNSON RANCH QUADRANGLE
WYOMING-ALBANY CO.
7.5 MINUTE SERIES (TOPOGRAPHIC)



Mapped, edited, and published by the Geological Survey
as part of the Department of the Interior program
for the development of the Missouri River Basin

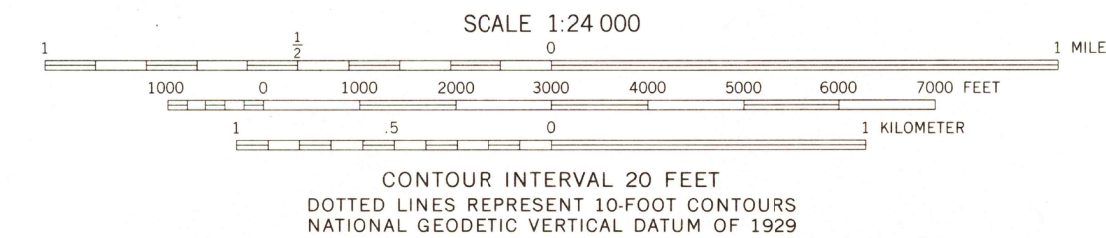
Control by USGS and NOS/NOAA

Topography by photogrammetric methods from aerial
photographs taken 1961. Field checked 1963

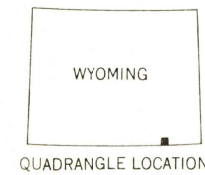
Polyconic projection. 1927 North American datum
10,000-foot grid based on Wyoming coordinate system, east zone
1000-meter Universal Transverse Mercator grid ticks,
zone 13, shown in blue

Fine red dashed lines indicate selected fence lines
Area covered by dashed light-blue pattern is subject
to controlled inundation

Revisions shown in purple compiled from aerial
photographs taken 1976. Map edited 1978
This information not field checked



THIS MAP COMPLIES WITH NATIONAL MAP ACCURACY STANDARDS
FOR SALE BY U.S. GEOLOGICAL SURVEY, DENVER, COLORADO 80225, OR RESTON, VIRGINIA 22092
A FOLDER DESCRIBING TOPOGRAPHIC MAPS AND SYMBOLS IS AVAILABLE ON REQUEST



ROAD CLASSIFICATION
Light-duty ————— Unimproved dirt - - - - -

USGS
Historical File
Topographic Division

JOHNSON RANCH, WYO.
N4100-W10537 5/7.5
PHOTOREVISED 1978
1963
AMS 4866 II SW-SERIES V874

DEC 21 1978

RETURN TO:
USGS AND HISTORICAL MAP ARCHIVES