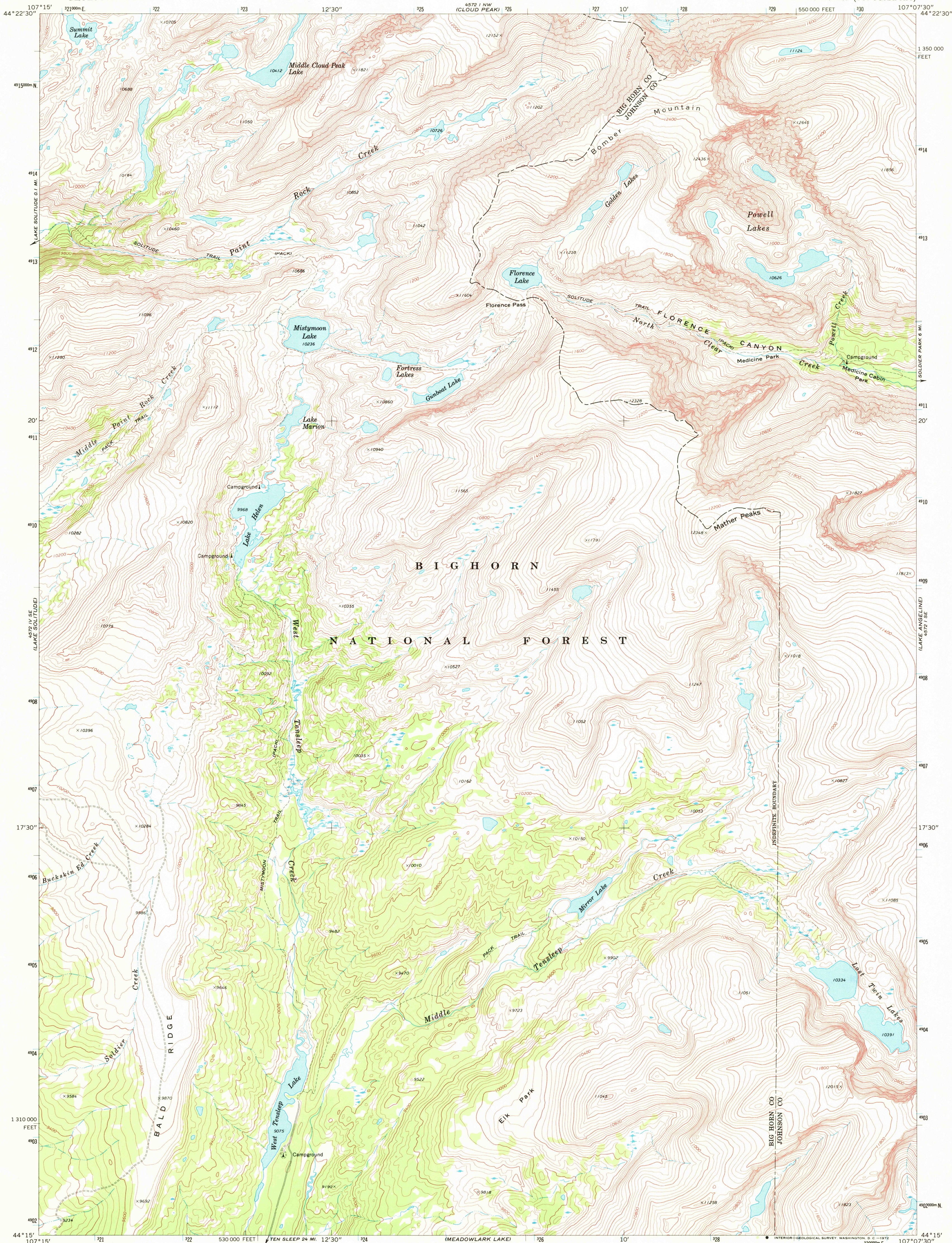


4572 I NE  
(SHEL LAKE)

UNITED STATES  
DEPARTMENT OF THE INTERIOR  
GEOLOGICAL SURVEY

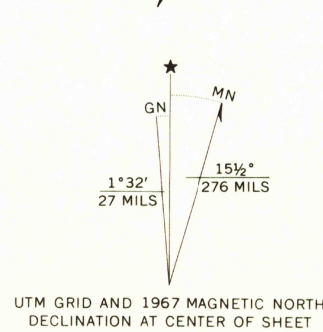
LAKE HELEN QUADRANGLE  
WYOMING  
7.5 MINUTE SERIES (TOPOGRAPHIC)

4572 I NE  
(WILLOW PARK  
RESERVOIR)

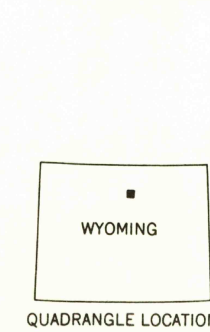


4572 I NE  
(BROKEN BACK  
NARROW WS)

Mapped, edited, and published by the Geological Survey  
Control by USGS and USC&GS  
Topography by photogrammetric methods from aerial  
photographs taken 1966. Field checked 1967  
Polyconic projection. 1927 North American datum  
10,000-foot grid based on Wyoming coordinate system,  
east central zone  
1000-meter Universal Transverse Mercator grid ticks,  
zone 13, shown in blue  
Land lines are omitted because of insufficient data



THIS MAP COMPLIES WITH NATIONAL MAP ACCURACY STANDARDS  
FOR SALE BY U. S. GEOLOGICAL SURVEY, DENVER, COLORADO 80225, OR WASHINGTON, D. C. 20242  
A FOLDER DESCRIBING TOPOGRAPHIC MAPS AND SYMBOLS IS AVAILABLE ON REQUEST



ROAD CLASSIFICATION  
Light-duty ——— Unimproved dirt ———

LAKE HELEN, WYO.  
N4415—W10707.5/7.5  
1967  
AMS 4572 I SW—SERIES V874

RETURN TO:  
USGS AND HISTORICAL MAP ARCHIVES

USGS  
HISTORICAL FILE  
TOPOGRAPHIC DIVISION

2645