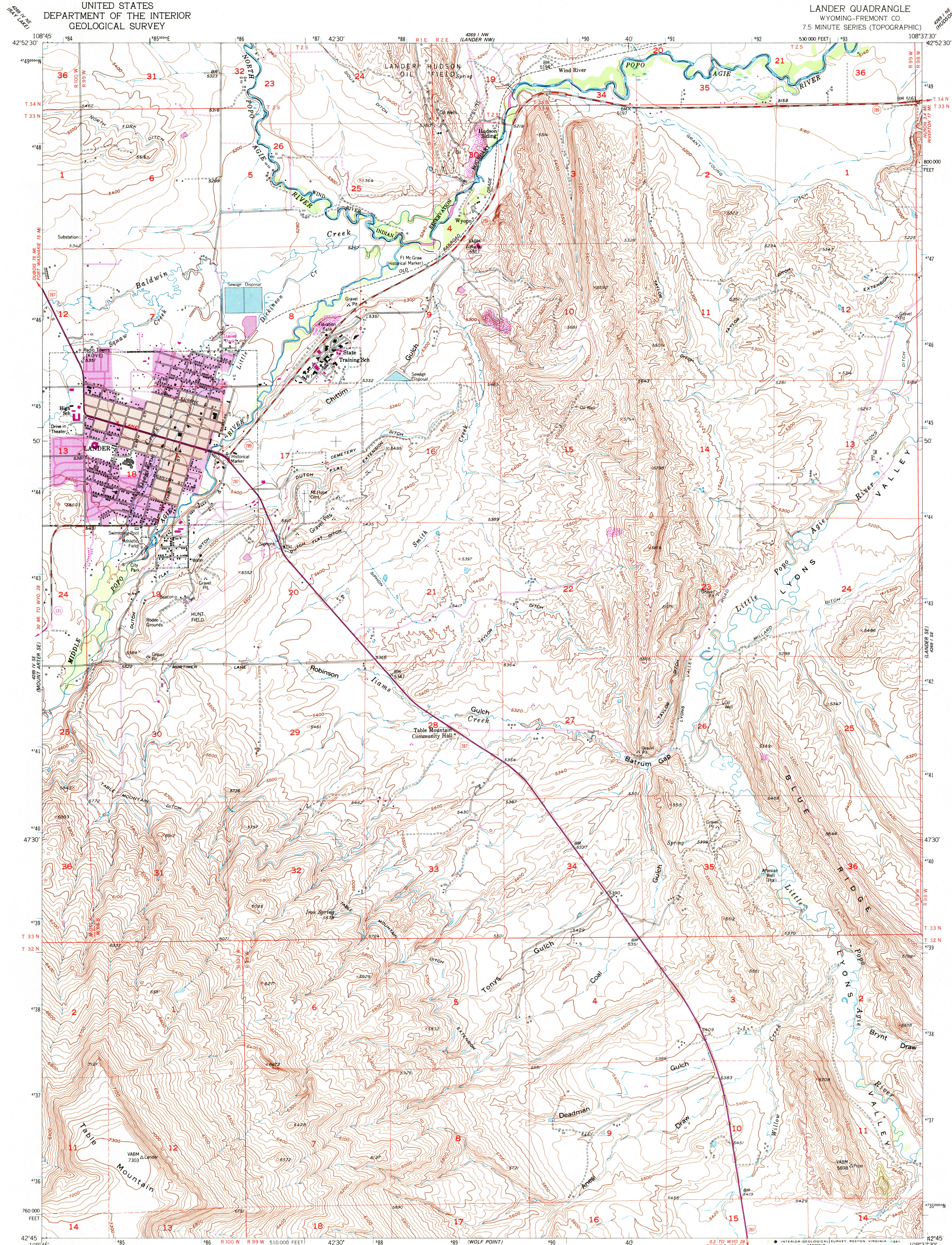


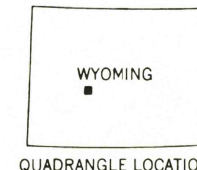
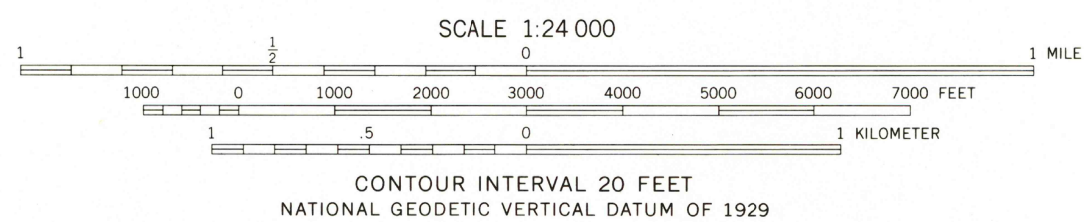
UNITED STATES  
DEPARTMENT OF THE INTERIOR  
GEOLOGICAL SURVEY

LANDER QUADRANGLE  
WYOMING-FREMONT CO.  
7.5 MINUTE SERIES (TOPOGRAPHIC)



Mapped, edited, and published by the Geological Survey as part of the Department of the Interior program for the development of the Missouri River Basin Control by USGS and NOS/NOAA  
Topography from aerial photographs by photogrammetric methods and by planimetric surveys 1952. Aerial photographs taken 1949 Revised 1960  
Polyconic projection. 1927 North American Datum 10,000-foot grid based on Wyoming coordinate system, west central zone 1000-meter Universal Transverse Mercator grid ticks, zone 12, shown in blue  
Dashed land lines indicate approximate locations  
Red tint indicates area in which only landmark buildings are shown

Revisions shown in purple compiled from aerial photographs taken 1975. Map edited 1978  
This information not field checked  
Purple tint indicates extension of urban areas



ROAD CLASSIFICATION  
Primary highway, hard surface  
Secondary highway, hard surface  
Unimproved road  
Interstate Route  
U. S. Route  
State Route  
Light-duty road, hard or improved surface  
Unimproved road  
Interstate Route  
U. S. Route  
State Route

LANDER, WYO.  
42108-G6-TF-024

THIS MAP COMPLIES WITH NATIONAL MAP ACCURACY STANDARDS  
FOR SALE BY U.S. GEOLOGICAL SURVEY  
DENVER, COLORADO 80225, OR RESTON, VIRGINIA 22092  
A FOLDER DESCRIBING TOPOGRAPHIC MAPS AND SYMBOLS IS AVAILABLE ON REQUEST

The difference between 1927 North American Datum and North American Datum of 1983 (NAD 83) for 7.5 minute intersections is given in USGS Bulletin 1875. The NAD 83 is shown by dashed corner ticks

1980  
PHOTOREVISED 1978  
DMA 4269 I SW-SERIES V874

USE AND HISTORY

MAR 15 1991

RECORD FILE COPY