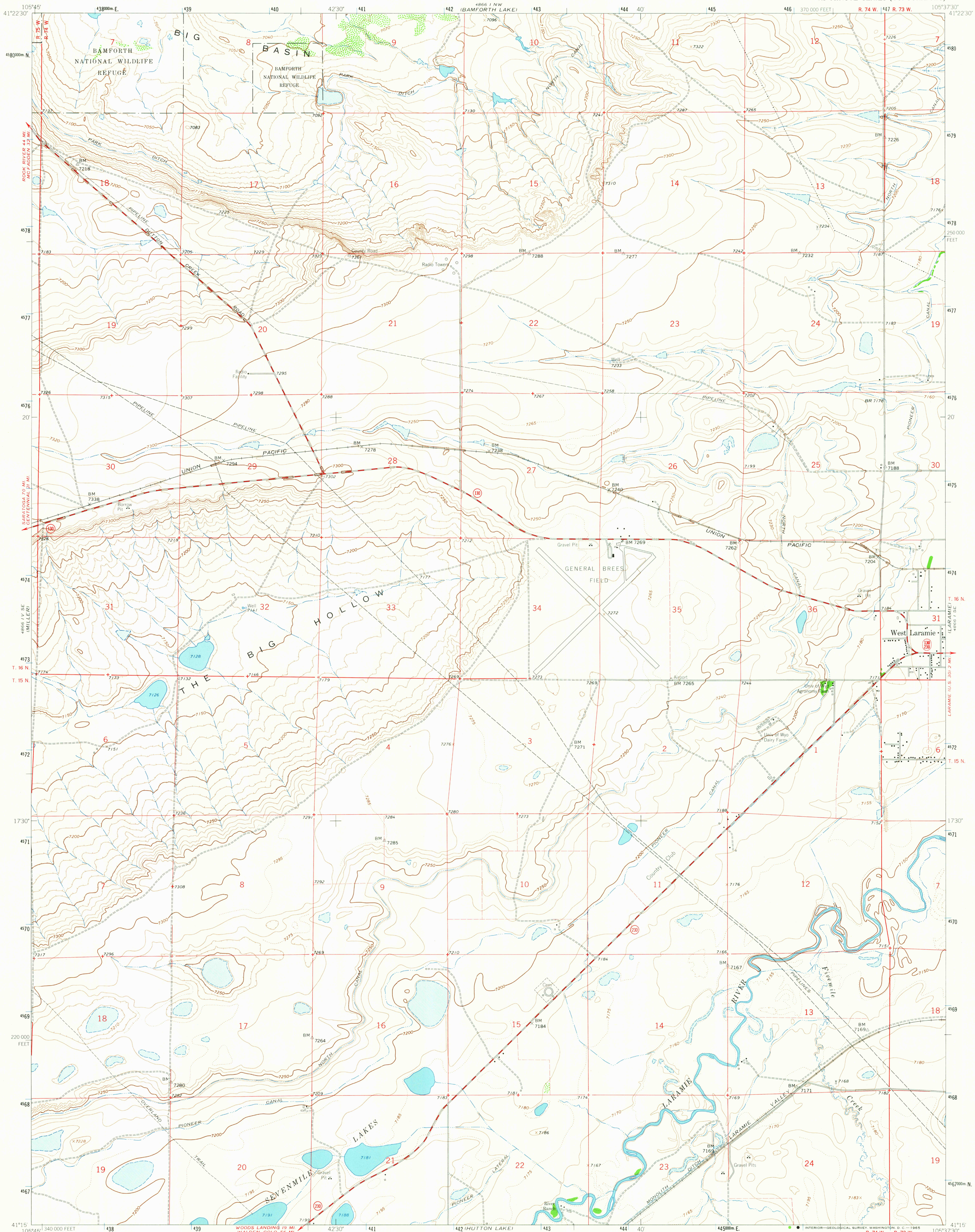


UNITED STATES
DEPARTMENT OF THE INTERIOR
GEOLOGICAL SURVEY

LARAMIE SW QUADRANGLE
WYOMING-ALBANY CO.
7.5 MINUTE SERIES (TOPOGRAPHIC)



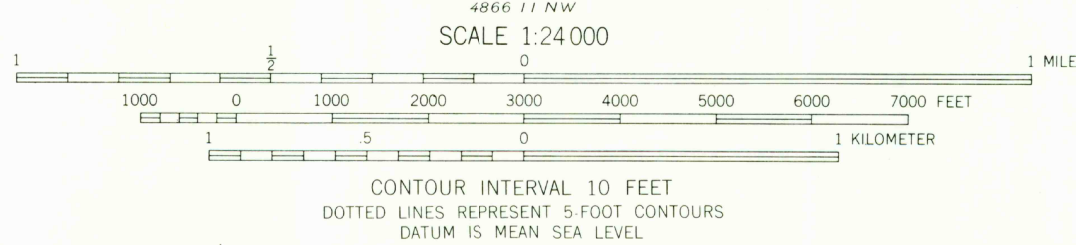
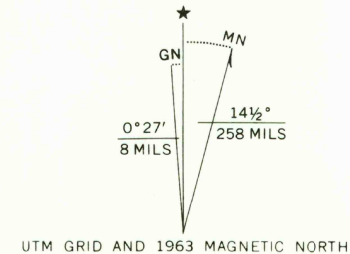
Mapped, edited, and published by the Geological Survey
as part of the Department of the Interior program
for the development of the Missouri River Basin

Control by USGS, USC&GS, and Wyoming Geodetic Survey

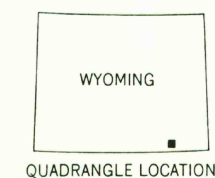
Topography by photogrammetric methods from aerial
photographs taken 1961. Field checked 1963

Polyconic projection. 1927 North American datum.
10,000-foot grid based on Wyoming coordinate system, east zone
1000-meter Universal Transverse Mercator grid ticks,
zone 13, shown in blue

Fine red dashed lines indicate selected fence lines



THIS MAP COMPLIES WITH NATIONAL MAP ACCURACY STANDARDS.
FOR SALE BY U.S. GEOLOGICAL SURVEY, DENVER 25, COLORADO OR WASHINGTON 25, D.C.
A FOLDER DESCRIBING TOPOGRAPHIC MAPS AND SYMBOLS IS AVAILABLE ON REQUEST



ROAD CLASSIFICATION
Medium-duty ——— Light-duty ———
Unimproved dirt =-----
State Route ○

LARAMIE SW, WYO.
N4115-W10537.5/7.5

1963

AMS 4866 1 SW-SERIES V874

U.S.G.S.
FILE COPY
TOPOGRAPHIC DIVISION

APR 5 1965

2730

RETURN TO:
USGS AND HISTORICAL MAP ARCHIVES