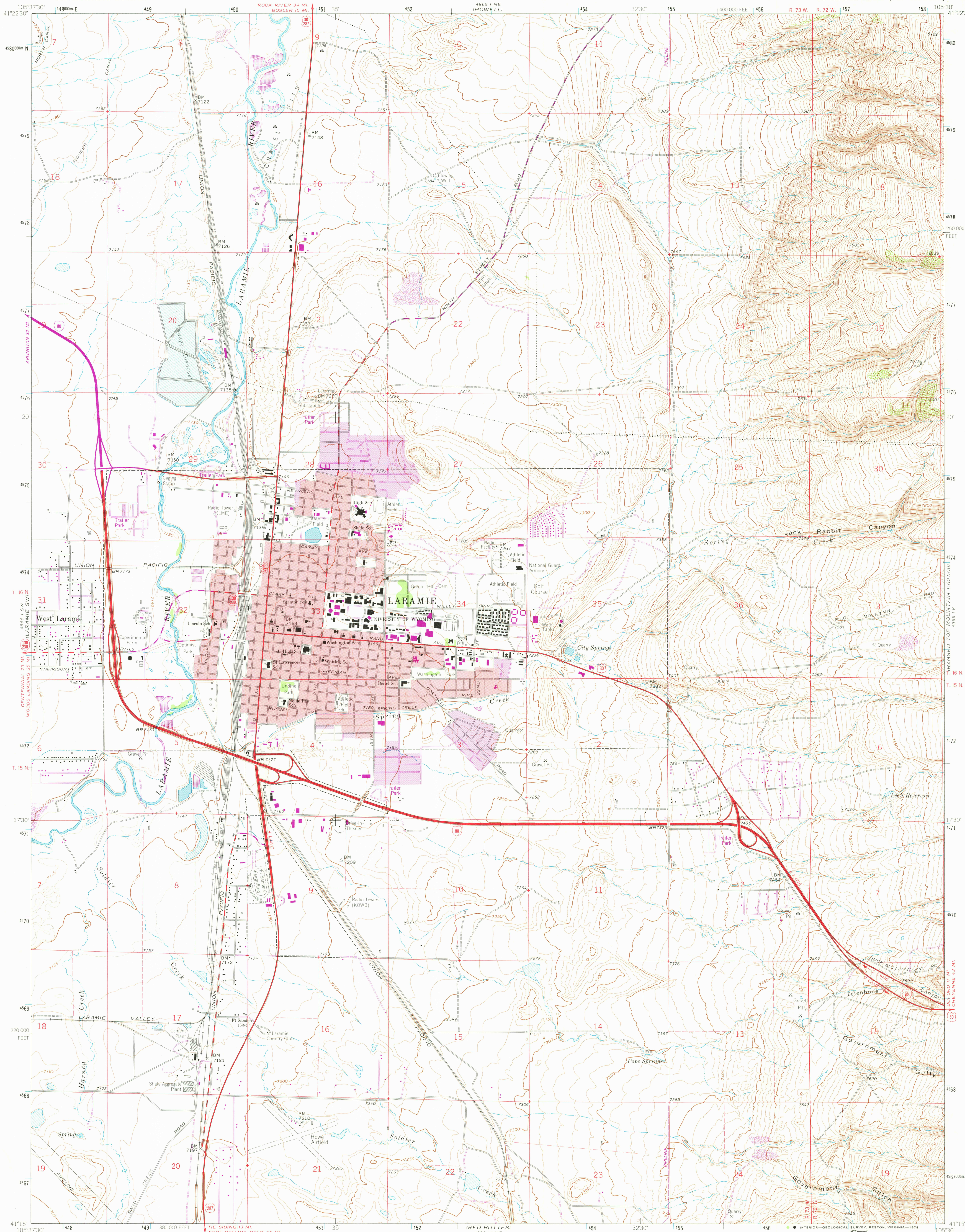


UNITED STATES  
DEPARTMENT OF THE INTERIOR  
GEOLOGICAL SURVEY

LARAMIE QUADRANGLE  
WYOMING-ALBANY CO.  
7.5 MINUTE SERIES (TOPOGRAPHIC)

4966 1 SE-  
1:25,000  
(RAGGED TOP MOUNTAIN)



Mapped, edited, and published by the Geological Survey as part of the Department of the Interior program for the development of the Missouri River Basin.

Control by USGS, NOS/NOAA and Wyoming Geodetic Survey

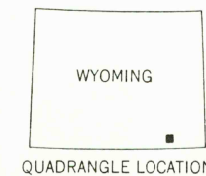
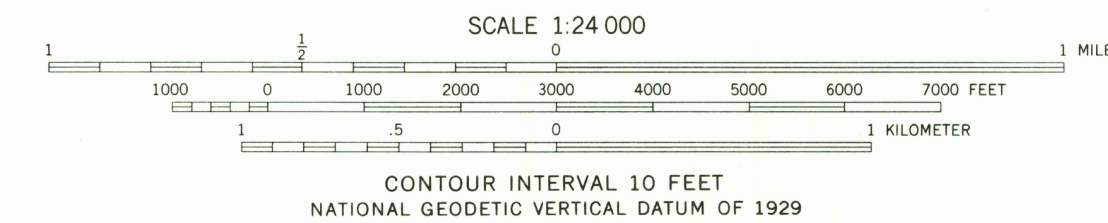
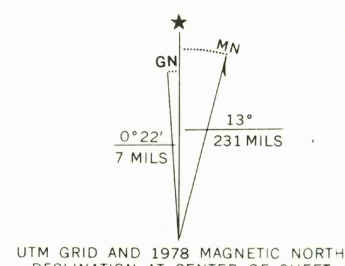
Topography by photogrammetric methods from aerial photographs taken 1961. Field checked 1963.

Polyconic projection. 1927 North American datum. 10,000-foot grid based on Wyoming coordinate system, east zone 1000-meter Universal Transverse Mercator grid ticks, zone 13, shown in blue.

Red tint indicates areas in which only landmark buildings are shown.

Fine red dashed lines indicate selected fence lines.

Purple tint indicates extension of urban areas.



ROAD CLASSIFICATION

Heavy-duty ——— Light-duty ———

Medium-duty ——— Unimproved dirt ———

Interstate Route U.S. Route State Route

USGS  
Historical File  
Topographic Division

LARAMIE, WYO.  
N4115-W10530/7.5

1963  
PHOTOREVISED 1978  
AMS 4866 1 SE-SERIES V874

THIS MAP COMPLIES WITH NATIONAL MAP ACCURACY STANDARDS.  
FOR SALE BY U. S. GEOLOGICAL SURVEY, DENVER, COLORADO 80225, OR RESTON, VIRGINIA 22092  
A FOLDER DESCRIBING TOPOGRAPHIC MAPS AND SYMBOLS IS AVAILABLE ON REQUEST

Revisions shown in purple compiled from aerial photographs taken 1976. Map edited 1978  
This information not field checked

JAN 10 1979

970°

RETURN TO:  
USGS AND HISTORICAL MAP ARCHIVES