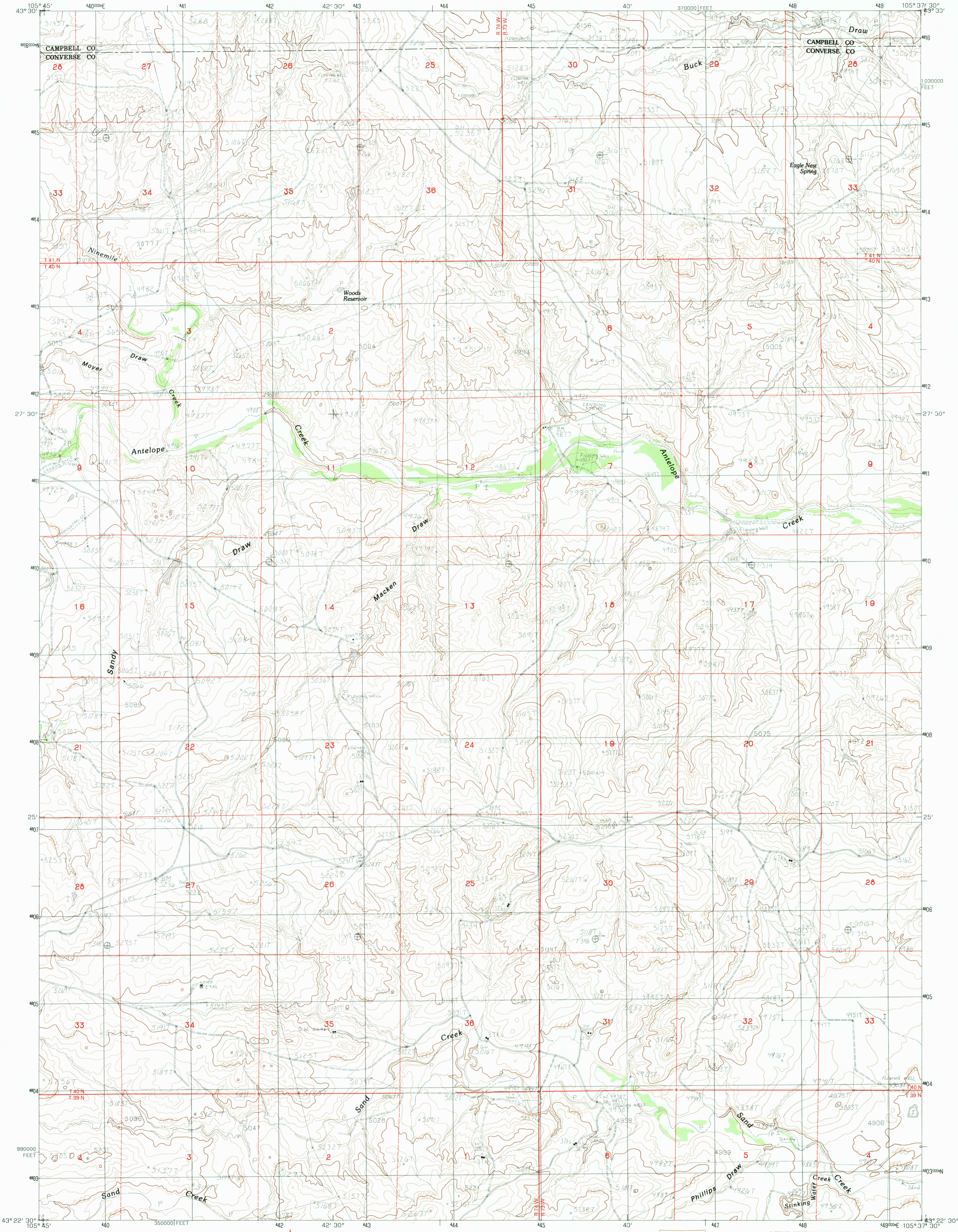


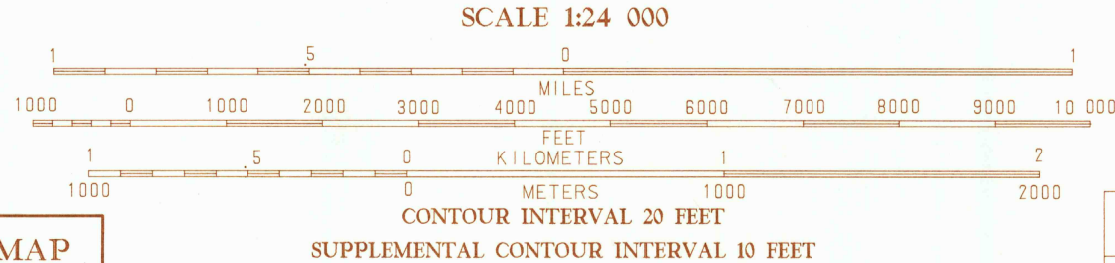
UNITED STATES
DEPARTMENT OF THE INTERIOR
GEOLOGICAL SURVEY

MACKEN DRAW QUADRANGLE
WYOMING
7.5 MINUTE SERIES (TOPOGRAPHIC)



PRODUCED BY THE UNITED STATES GEOLOGICAL SURVEY
CONTROL BY U.S.G.S. NOS/NOAA
COMPILED FROM AERIAL PHOTOGRAPHS TAKEN 1976
FIELD CHECKED 1977 MAP EDITED 1984
PROJECTION TRANSVERSE MERCATOR
GRID 100-METER UNIVERSAL TRANSVERSE MERCATOR ZONE 13
1000-FOOT STATE GRID TICKS WYOMING, EAST ZONE
UTM GRID DECLINATION 028° WEST
1984 MAGNETIC NORTH DECLINATION 13° EAST
VERTICAL DATUM 1929 NORTH AMERICAN DATUM
To place on the predicted North American Datum of 1983,
move the projection lines as shown by dashed corner ticks
6 meters north and 48 meters east.
There may be private inholdings within the boundaries of any
Federal and State Reservations shown on this map.
All marginal data and lettering generated and positioned by
automated type placement procedures.

PROVISIONAL MAP
Produced from original
manuscript drawings. Infor-
mation shown as of date of
field check. 3



1	2	3	4	5	6	7	8
1	2	3	4	5	6	7	8
1	2	3	4	5	6	7	8
1	2	3	4	5	6	7	8

MACKEN DRAW, WYOMING
PROVISIONAL EDITION 1984

43105-D6-TF024