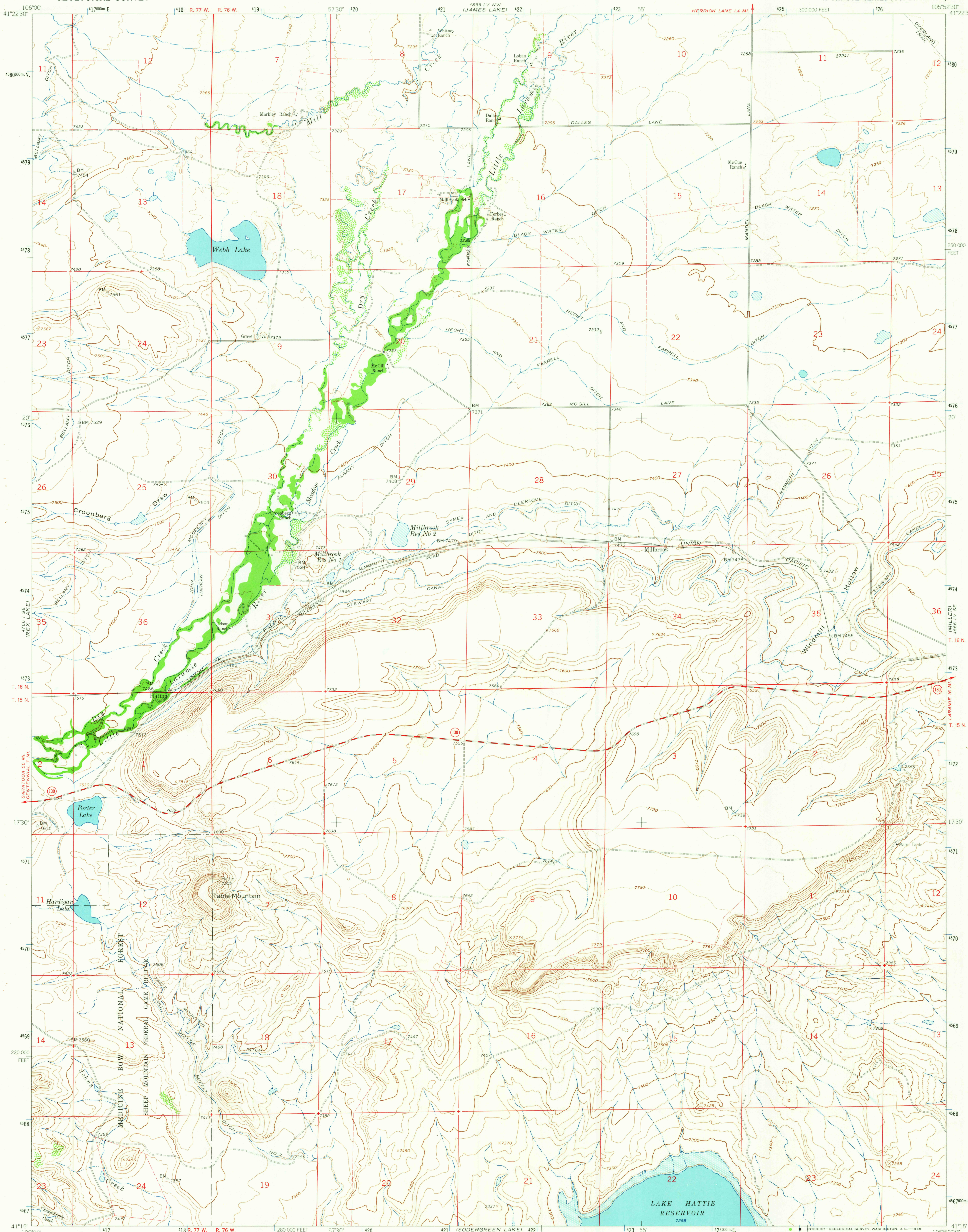
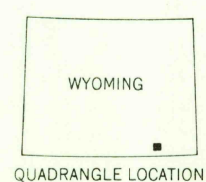
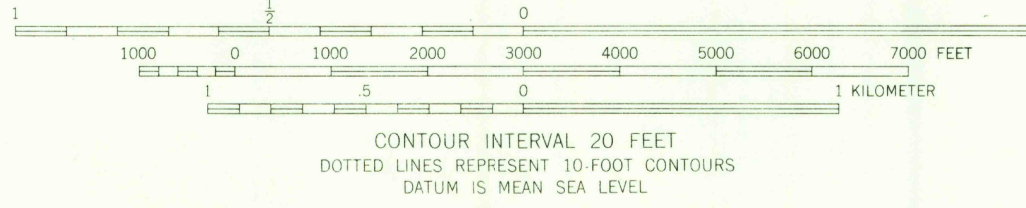
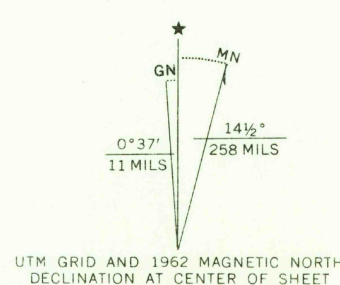


UNITED STATES
DEPARTMENT OF THE INTERIOR
GEOLOGICAL SURVEY

MILLBROOK QUADRANGLE
WYOMING-ALBANY CO.
7.5 MINUTE SERIES (TOPOGRAPHIC)



Mapped, edited, and published by the Geological Survey as part of the Department of the Interior program for the development of the Missouri River Basin. Topography by USGS, USC&GS, and Wyoming Geodetic Survey. Photographic by photogrammetric methods from aerial photographs taken 1961. Field checked 1962. Polyconic projection. 1927 North American datum. 10,000-foot grid based on Wyoming coordinate system, east zone. 1000-meter Universal Transverse Mercator grid ticks, zone 13, shown in blue. Fine red dashed lines indicate selected fence and field lines. Area covered by dashed light blue pattern is subject to controlled inundation.



ROAD CLASSIFICATION
Medium-duty ——— Light-duty ———
Unimproved dirt ———
State Route ———

THIS MAP COMPLIES WITH NATIONAL MAP ACCURACY STANDARDS
FOR SALE BY U.S. GEOLOGICAL SURVEY, DENVER 25, COLORADO OR WASHINGTON 25, D.C.
A FOLDER DESCRIBING TOPOGRAPHIC MAPS AND SYMBOLS IS AVAILABLE ON REQUEST

MILLBROOK, WYO.
N4115-W10552.5/7.5
1962
AMS 4866 IV SW-SERIES V874

FILE COPY
TOPOGRAPHIC DIVISION

RETURN TO:
USGS AND HISTORICAL MAP ARCHIVES

AUG 26 1965